



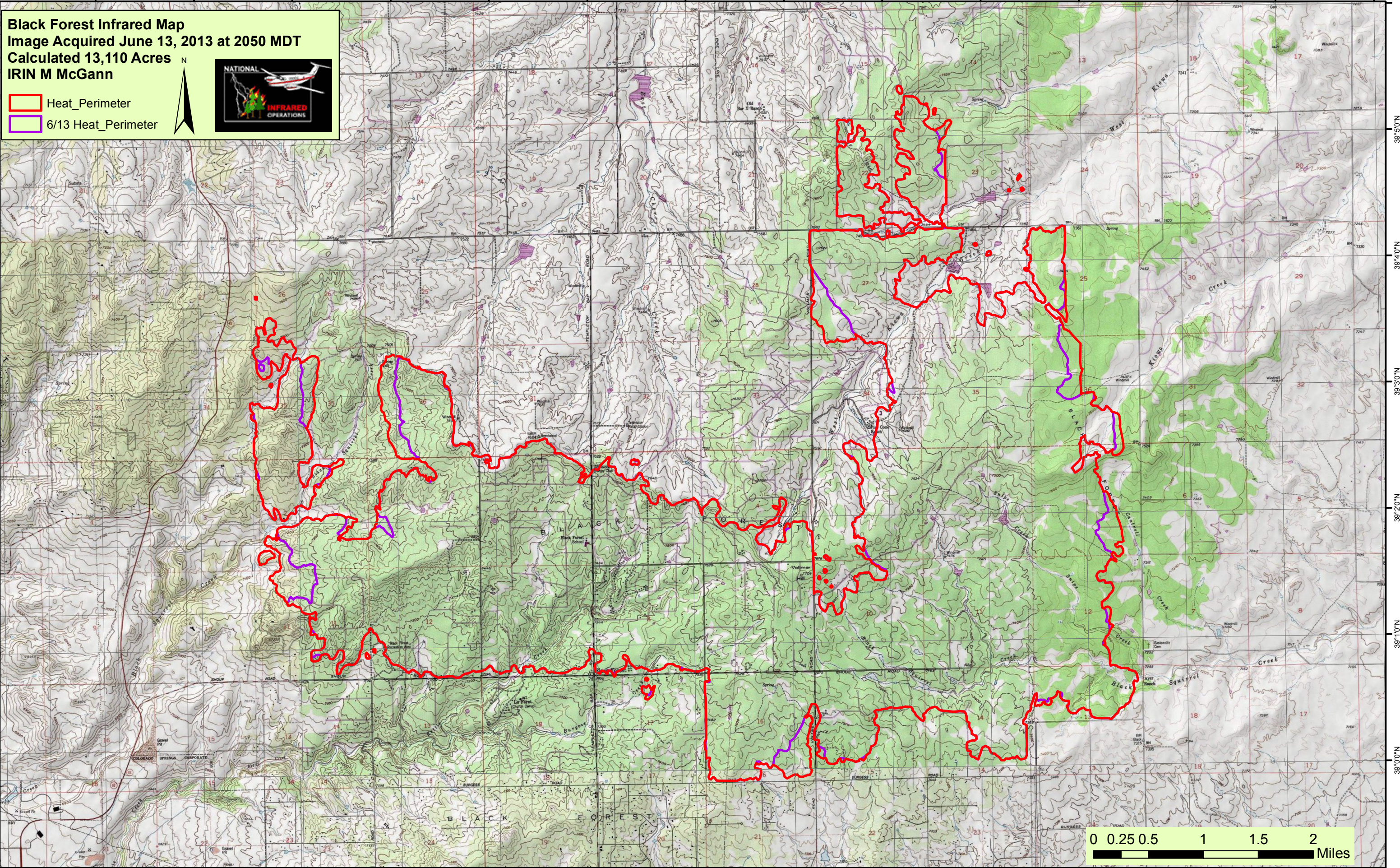


104°47'0"W 104°46'0"W 104°45'0"W 104°44'0"W 104°43'0"W 104°42'0"W 104°41'0"W 104°40'0"W 104°39'0"W 104°38'0"W 104°37'0"W 104°36'0"W 104°35'0"W 104°34'0"W

**Black Forest Infrared Map**  
 Image Acquired June 13, 2013 at 2050 MDT  
 Calculated 13,110 Acres  
 IRIN M McGann

 Heat\_Perimeter  
 6/13 Heat\_Perimeter



104°48'0"W 104°47'0"W 104°46'0"W 104°45'0"W 104°44'0"W 104°43'0"W 104°42'0"W 104°41'0"W 104°40'0"W 104°39'0"W 104°38'0"W 104°37'0"W 104°36'0"W 104°35'0"W

