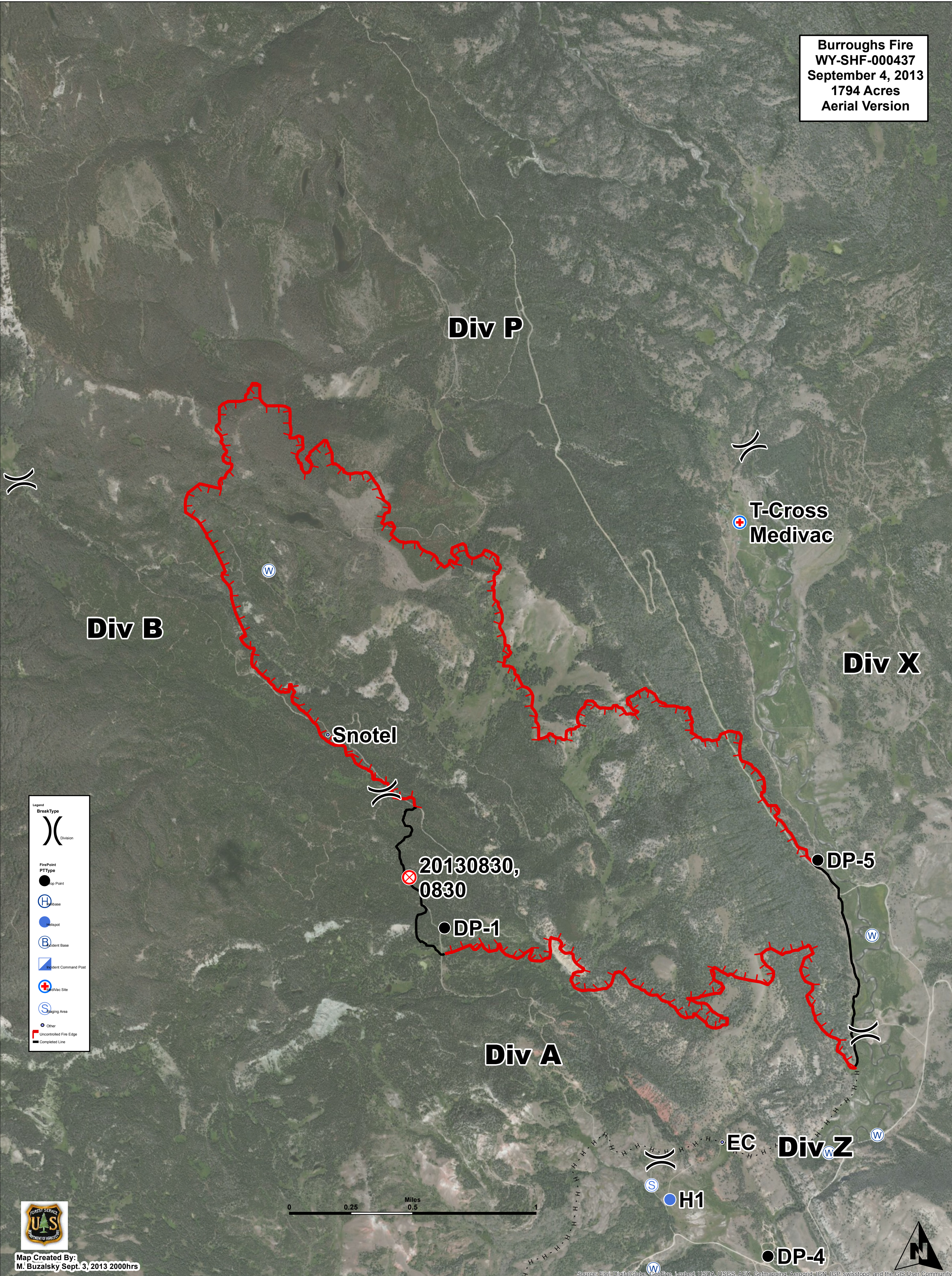


Burroughs Fire
WY-SHF-000437
September 4, 2013
1794 Acres
Aerial Version



Div P

Div B

Div X

Div A

Div Z

T-Cross
Medivac

Snotel

20130830,
0830

DP-1

DP-5

H1

EC

DP-4

Legend

BreakType

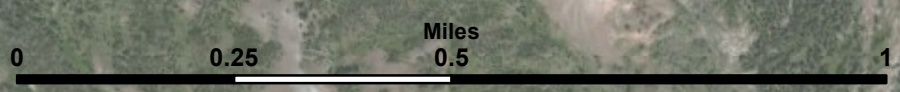
- Division

**FirePoint
PTType**

- Top Point
- Base
- Helispot
- Incident Base
- Incident Command Post
- Medivac Site
- Staging Area
- Other
- Uncontrolled Fire Edge
- Completed Line



Map Created By:
M. Buzalsky Sept. 3, 2013 2000hrs



Source: Esri, DigitalGlobe, GeoEye, Earthstar, USDA, USGS, AEX, Geomatics, Aerogrid, IGN, IGP, swisstopo, and the GIS User Community

