

108°14'W

108°13'W

108°12'W

108°11'W

108°10'W

CITADEL FIRE CO-WRD-000249

Pilot Map 7/24/13

Perimeter as of 7/23/13 2232 2,009 ac.



0 0.25 0.5 0.75 1 Miles

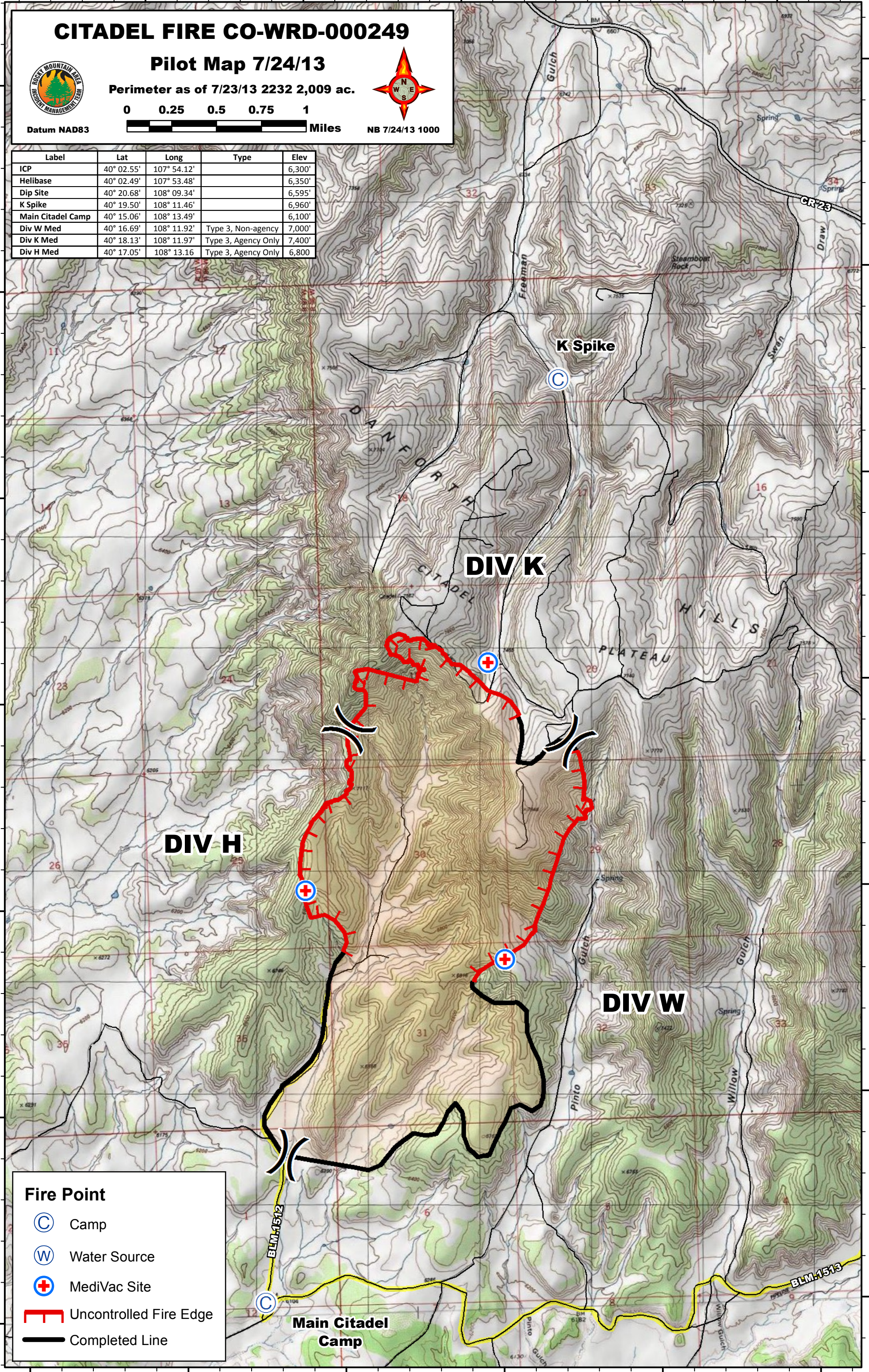
NB 7/24/13 1000

Datum NAD83

Label	Lat	Long	Type	Elev
ICP	40° 02.55'	107° 54.12'		6,300'
Helibase	40° 02.49'	107° 53.48'		6,350'
Dip Site	40° 20.68'	108° 09.34'		6,595'
K Spike	40° 19.50'	108° 11.46'		6,960'
Main Citadel Camp	40° 15.06'	108° 13.49'		6,100'
Div W Med	40° 16.69'	108° 11.92'	Type 3, Non-agency	7,000'
Div K Med	40° 18.13'	108° 11.97'	Type 3, Agency Only	7,400'
Div H Med	40° 17.05'	108° 13.16'	Type 3, Agency Only	6,800'

40°21'N
40°20'N
40°19'N
40°18'N
40°17'N
40°16'N
40°15'N

40°21'N
40°20'N
40°19'N
40°18'N
40°17'N
40°16'N
40°15'N



Fire Point

- Camp
- Water Source
- MediVac Site
- Uncontrolled Fire Edge
- Completed Line

108°15'W 108°14'W 108°13'W 108°12'W 108°11'W 108°10'W