

108°14'W

108°13'W

108°12'W

108°11'W

108°10'W

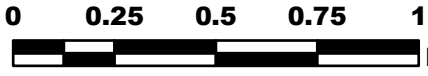
# CITADEL FIRE CO-WRD-000249

## IAP Map 7/25/13

Perimeter as of 7/23/13 2232 2,009 ac.



Datum NAD83

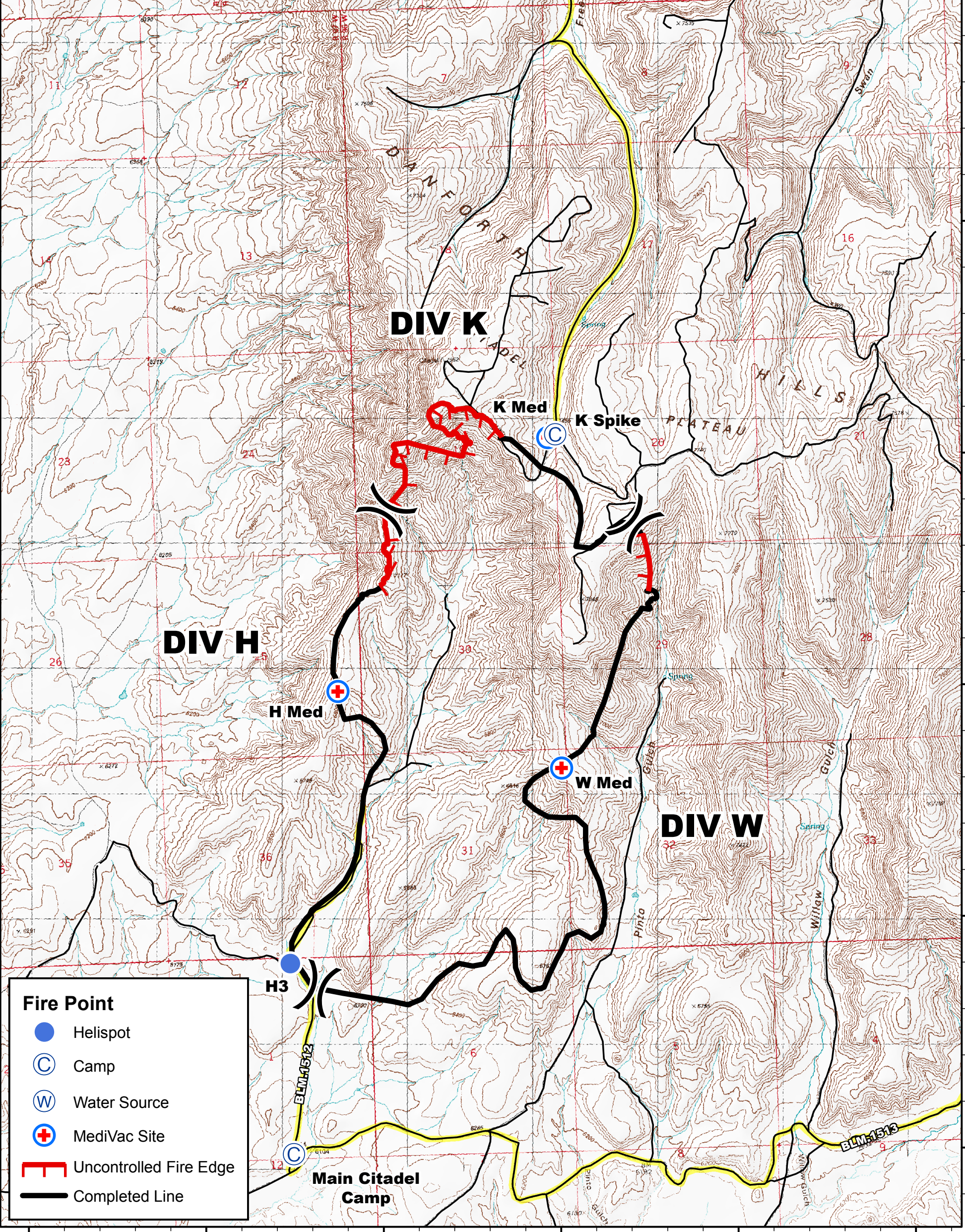


NB 7/24/13 2030

Label	Lat (N)	Long (W)	Type	Elev
ICP	40° 02.55'	107° 54.12'		6,300'
Helibase	40° 02.49'	107° 53.48'		6,350'
Dip Site	40° 20.68'	108° 09.34'		6,595'
K Spike	40° 18.14'	108° 11.89'		7,500'
Main Citadel Camp	40° 15.06'	108° 13.49'		6,100'
Div W Med	40° 16.69'	108° 11.92'	Type 3, Non-agency	7,000'
Div K Med	40° 18.13'	108° 11.97'	Type 3, Agency Only	7,400'
Div H Med	40° 17.05'	108° 13.16'	Type 3, Agency Only	6800'
H3	40° 15.89'	108° 13.48'	Type 2	6,240'

40°21'N  
40°20'N  
40°19'N  
40°18'N  
40°17'N  
40°16'N  
40°15'N

40°21'N  
40°20'N  
40°19'N  
40°18'N  
40°17'N  
40°16'N  
40°15'N



**Fire Point**

- Helispot
- Camp
- Water Source
- MediVac Site
- Uncontrolled Fire Edge
- Completed Line

108°15'W 108°14'W 108°13'W 108°12'W 108°11'W 108°10'W