

108°14'W

108°13'W

108°12'W

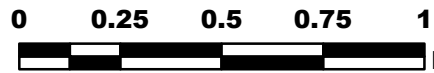
108°11'W

108°10'W

# CITADEL FIRE CO-WRD-000249

## IAP Map 7/25/13

Perimeter as of 7/23/13 2232 2,009 ac.



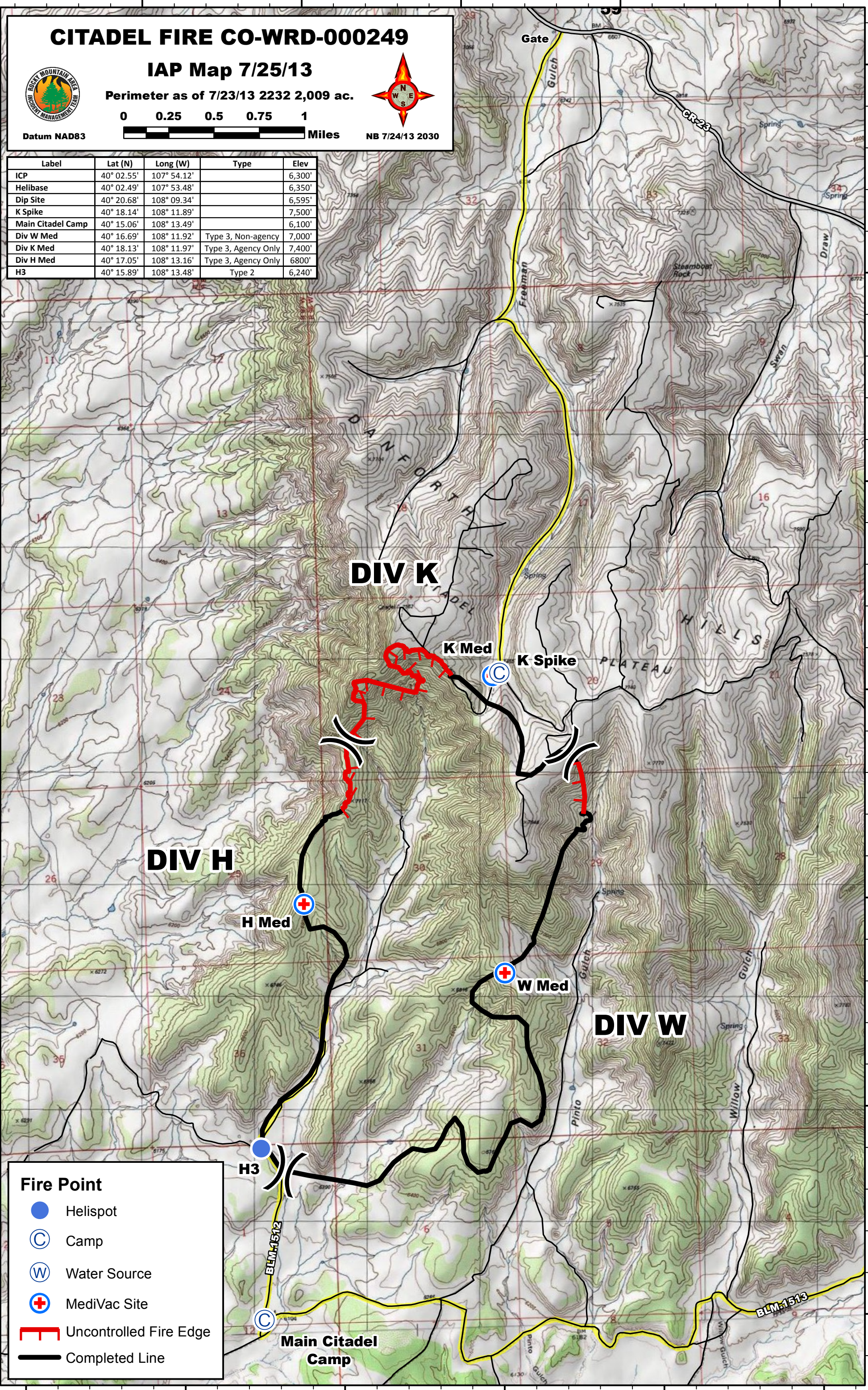
Datum NAD83

NB 7/24/13 2030

| Label             | Lat (N)    | Long (W)    | Type                | Elev   |
|-------------------|------------|-------------|---------------------|--------|
| ICP               | 40° 02.55' | 107° 54.12' |                     | 6,300' |
| Helibase          | 40° 02.49' | 107° 53.48' |                     | 6,350' |
| Dip Site          | 40° 20.68' | 108° 09.34' |                     | 6,595' |
| K Spike           | 40° 18.14' | 108° 11.89' |                     | 7,500' |
| Main Citadel Camp | 40° 15.06' | 108° 13.49' |                     | 6,100' |
| Div W Med         | 40° 16.69' | 108° 11.92' | Type 3, Non-agency  | 7,000' |
| Div K Med         | 40° 18.13' | 108° 11.97' | Type 3, Agency Only | 7,400' |
| Div H Med         | 40° 17.05' | 108° 13.16' | Type 3, Agency Only | 6800'  |
| H3                | 40° 15.89' | 108° 13.48' | Type 2              | 6,240' |

40°21'N  
40°20'N  
40°19'N  
40°18'N  
40°17'N  
40°16'N  
40°15'N

40°21'N  
40°20'N  
40°19'N  
40°18'N  
40°17'N  
40°16'N  
40°15'N



### DIV K

K Med

K Spike

### DIV H

H Med

W Med

### DIV W

H3

Main Citadel Camp

#### Fire Point

- Helispot
- Camp
- Water Source
- MediVac Site
- Uncontrolled Fire Edge
- Completed Line