

EAST TSCHUDDI FIRE
CO-WRD-000247
 Perimeter as of 7/23/13
 2236 hrs 438 ac.

AND

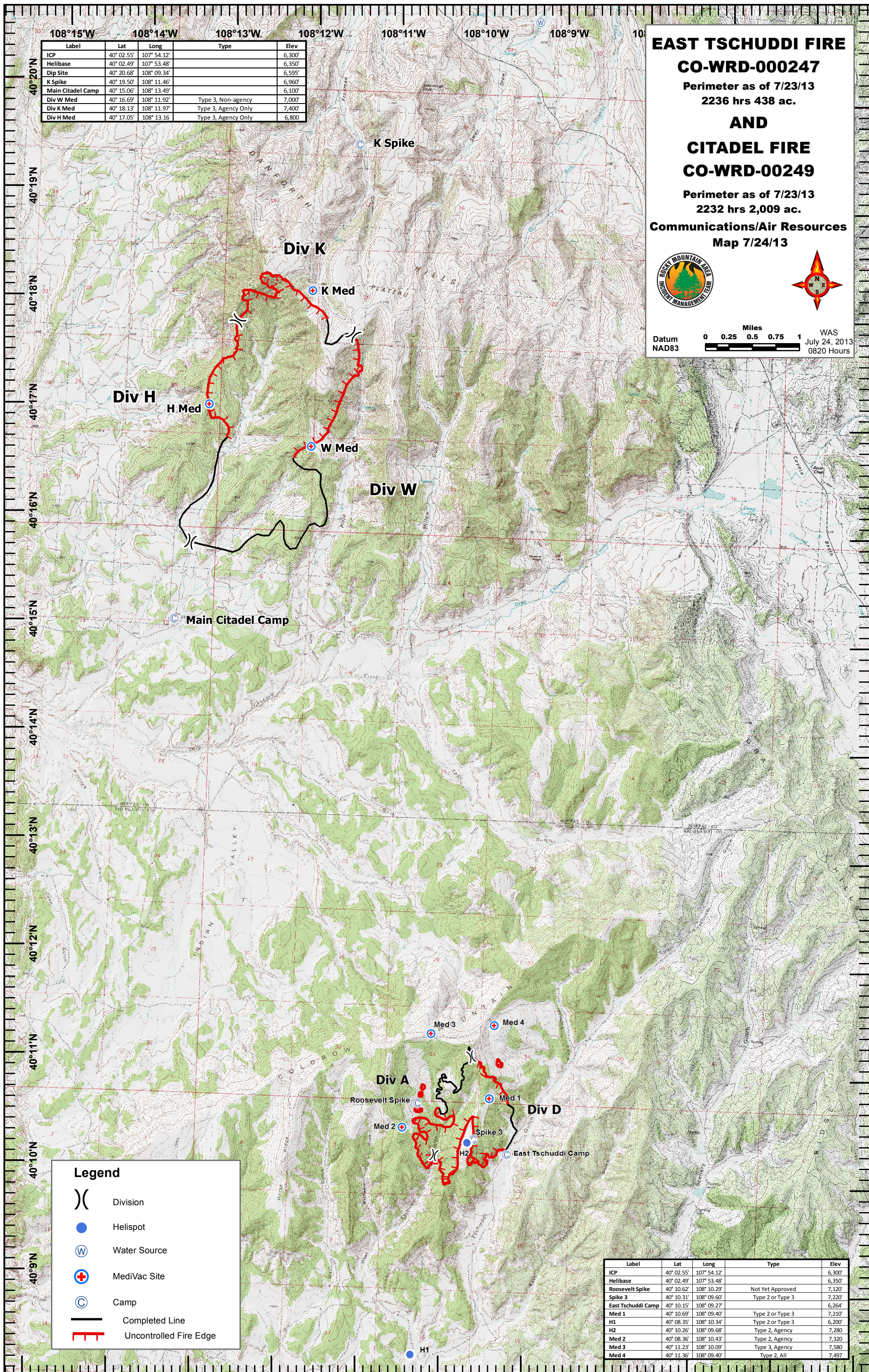
CITADEL FIRE
CO-WRD-00249
 Perimeter as of 7/23/13
 2232 hrs 2,009 ac.

Communications/Air Resources
Map 7/24/13



Datum NAD83
 Scale: 0, 0.25, 0.5, 0.75, 1 Miles
 WAS July 24, 2013 0820 Hours

Label	Lat	Long	Type	Elev
ICP	40° 02.55'	107° 54.12'		6,300'
Helibase	40° 02.49'	107° 53.48'		6,350'
Dip Site	40° 20.68'	108° 09.34'		6,595'
K Spike	40° 19.50'	108° 11.46'		6,960'
Main Citadel Camp	40° 15.06'	108° 13.49'		6,100'
Div W Med	40° 16.69'	108° 11.92'	Type 3, Non-agency	7,000'
Div K Med	40° 18.13'	108° 11.97'	Type 3, Agency Only	7,400'
Div H Med	40° 17.05'	108° 13.16'	Type 3, Agency Only	6,800'



Legend

- Division
- Helispot
- Water Source
- MediVac Site
- Camp
- Completed Line
- Uncontrolled Fire Edge

Label	Lat	Long	Type	Elev
ICP	40° 02.55'	107° 54.12'		6,300'
Helibase	40° 02.49'	107° 53.48'		6,350'
Roosevelt Spike	40° 10.62'	108° 10.29'	Not Yet Approved	7,120'
Spike 3	40° 10.31'	108° 09.60'	Type 2 or Type 3	7,220'
East Tschuddi Camp	40° 10.15'	108° 09.27'		6,264'
Med 1	40° 10.69'	108° 09.40'	Type 2 or Type 3	7,210'
H1	40° 08.35'	108° 10.34'	Type 2 or Type 3	6,200'
H2	40° 10.26'	108° 09.68'	Type 2, Agency	7,280'
Med 2	40° 08.36'	108° 10.43'	Type 2, Agency	7,320'
Med 3	40° 11.23'	108° 10.09'	Type 3, Agency	7,580'
Med 4	40° 11.36'	108° 09.40'	Type 2, All	7,497'