

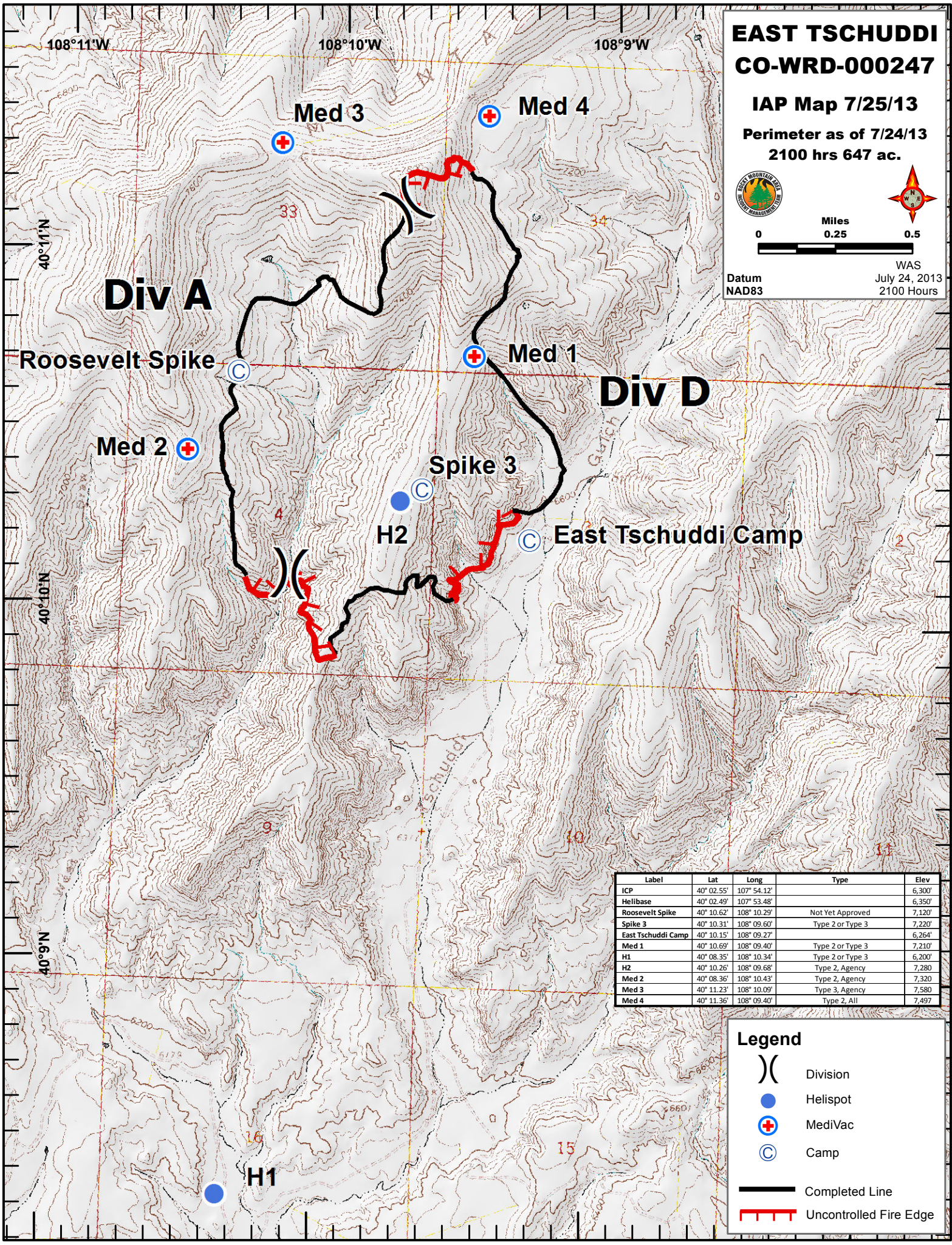
**EAST TSCHUDDI  
CO-WRD-000247**

**IAP Map 7/25/13**

**Perimeter as of 7/24/13  
2100 hrs 647 ac.**



WAS  
Datum NAD83 July 24, 2013  
2100 Hours



Label	Lat	Long	Type	Elev
ICP	40° 02.55'	107° 54.12'		6,300'
Helibase	40° 02.49'	107° 53.48'		6,350'
Roosevelt Spike	40° 10.62'	108° 10.29'	Not Yet Approved	7,120'
Spike 3	40° 10.31'	108° 09.60'	Type 2 or Type 3	7,220'
East Tschuddi Camp	40° 10.15'	108° 09.27'		6,264'
Med 1	40° 10.69'	108° 09.40'	Type 2 or Type 3	7,210'
H1	40° 08.35'	108° 10.34'	Type 2 or Type 3	6,200'
H2	40° 10.26'	108° 09.68'	Type 2, Agency	7,280'
Med 2	40° 08.36'	108° 10.43'	Type 2, Agency	7,320'
Med 3	40° 11.23'	108° 10.09'	Type 3, Agency	7,580'
Med 4	40° 11.36'	108° 09.40'	Type 2, All	7,497'

**Legend**

- Division
- Helispot
- MediVac
- Camp
- Completed Line
- Uncontrolled Fire Edge