

EAST TSCHUDDI FIRE
CO-WRD-000247
 Perimeter as of 7/24/13
 2100 hrs 647 ac.

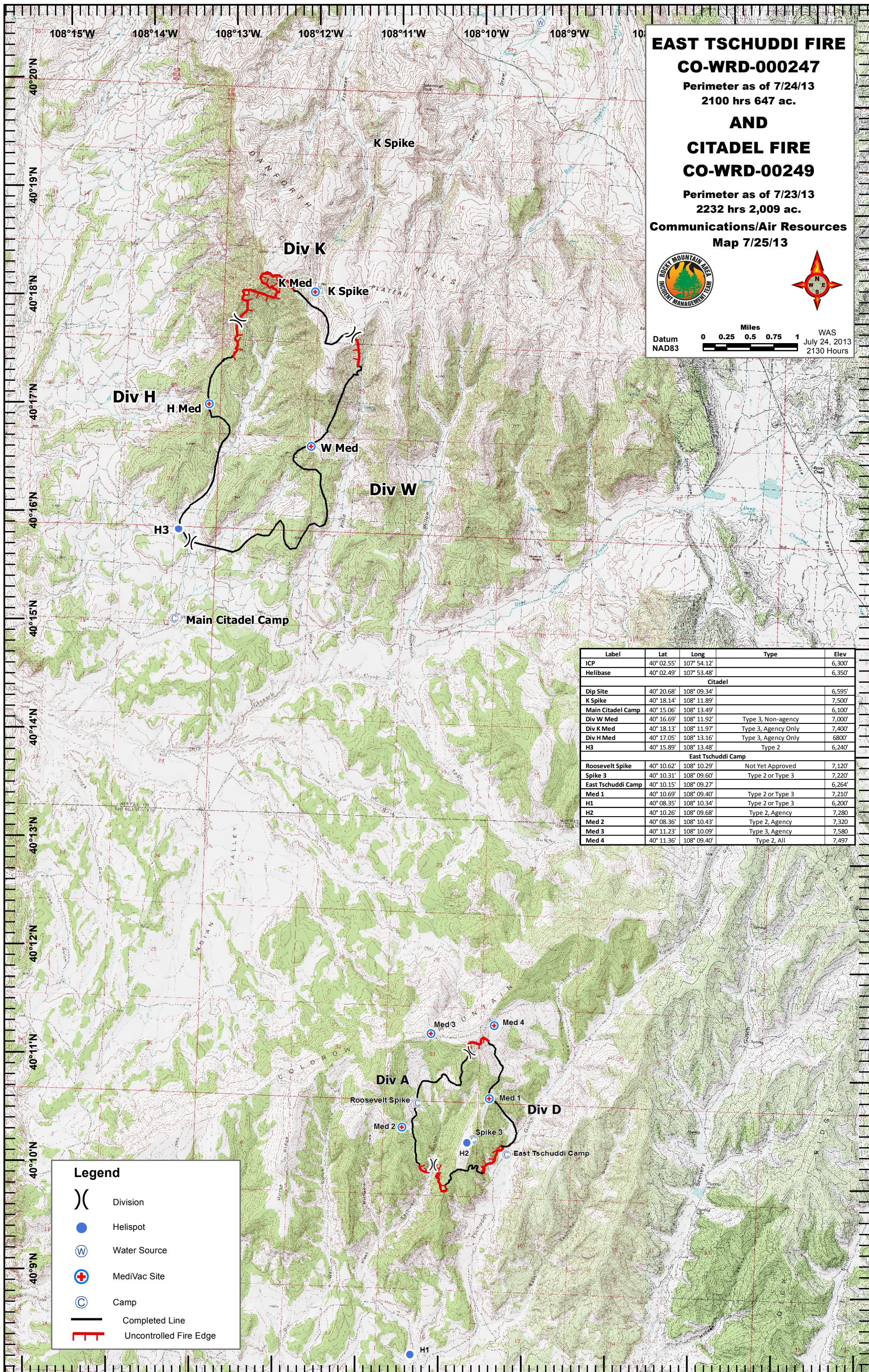
AND

CITADEL FIRE
CO-WRD-00249
 Perimeter as of 7/23/13
 2232 hrs 2,009 ac.

Communications/Air Resources
Map 7/25/13



Datum NAD83
 Scale: 0 0.25 0.5 0.75 1 Miles
 WAS July 24, 2013 2130 Hours



Label	Lat	Long	Type	Elev
ICP	40° 02.55'	107° 54.12'		6,300'
Helibase	40° 02.49'	107° 53.48'		6,350'
Citadel				
Dip Site	40° 20.68'	108° 09.34'		6,595'
K Spike	40° 18.14'	108° 11.89'		7,500'
Main Citadel Camp	40° 15.06'	108° 13.49'		6,100'
Div W Med	40° 16.69'	108° 11.92'	Type 3, Non-agency	7,000'
Div K Med	40° 18.13'	108° 11.97'	Type 3, Agency Only	7,400'
Div H Med	40° 17.05'	108° 13.16'	Type 3, Agency Only	6800'
H3	40° 15.89'	108° 13.48'	Type 2	6,240'
East Tschuddi Camp				
Roosevelt Spike	40° 10.62'	108° 10.29'	Not Yet Approved	7,120'
Spike 3	40° 10.31'	108° 09.60'	Type 2 or Type 3	7,220'
East Tschuddi Camp	40° 10.15'	108° 09.27'		6,264'
Med 1	40° 10.69'	108° 09.40'	Type 2 or Type 3	7,210'
H1	40° 08.35'	108° 10.34'	Type 2 or Type 3	6,200'
H2	40° 10.26'	108° 09.68'	Type 2, Agency	7,280'
Med 2	40° 08.36'	108° 10.43'	Type 2, Agency	7,320'
Med 3	40° 11.23'	108° 10.09'	Type 3, Agency	7,580'
Med 4	40° 11.36'	108° 09.40'	Type 2, All	7,497'

Legend

- Division
- Helispot
- Water Source
- MediVac Site
- Camp
- Completed Line
- Uncontrolled Fire Edge