

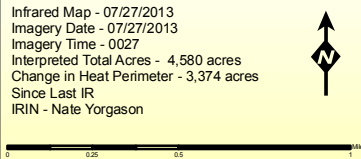
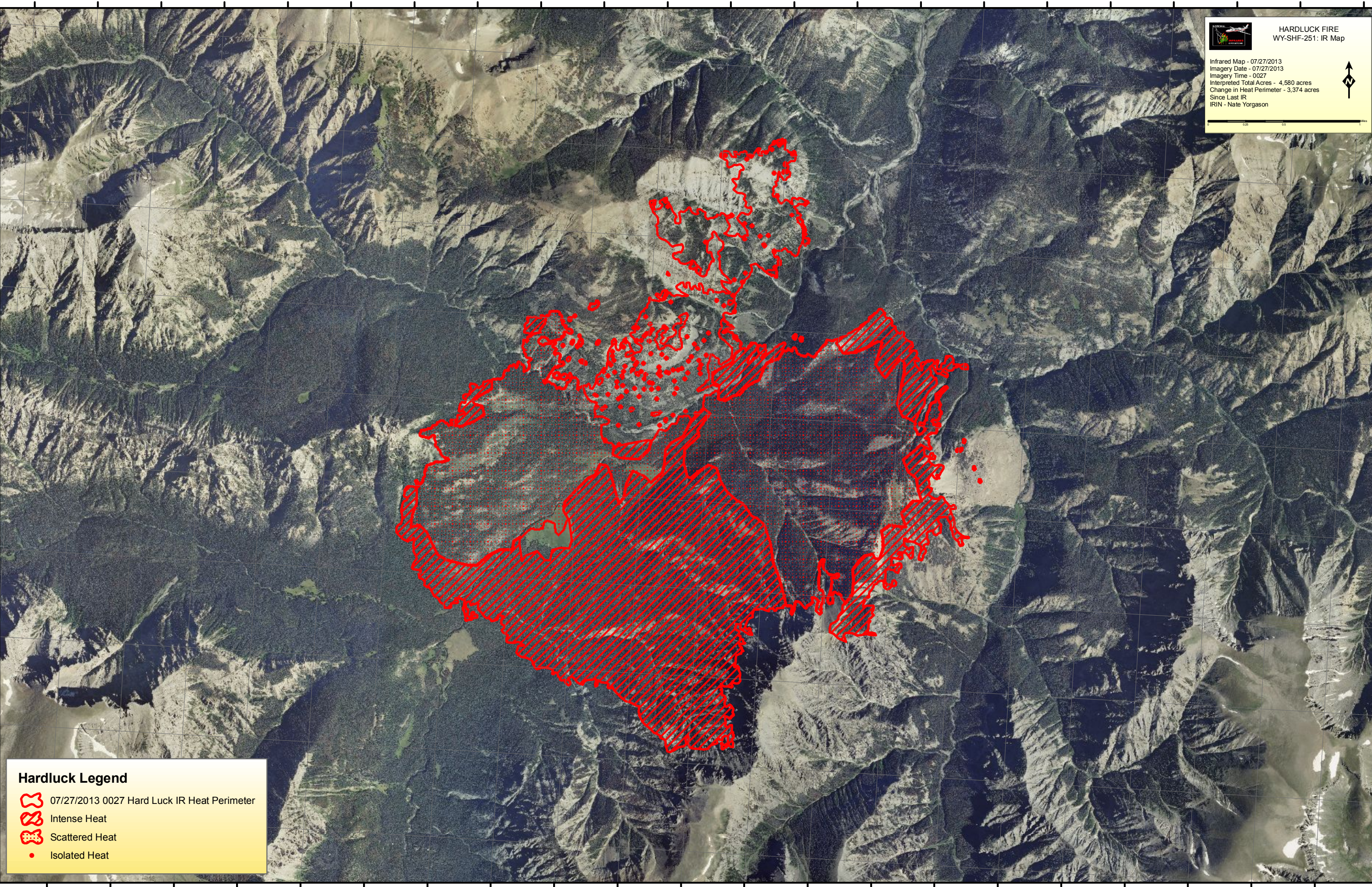
109°49'0"W 109°48'30"W 109°48'0"W 109°47'30"W 109°47'0"W 109°46'30"W 109°46'0"W 109°45'30"W 109°45'0"W 109°44'30"W 109°44'0"W 109°43'30"W 109°43'0"W 109°42'30"W 109°42'0"W 109°41'30"W 109°41'0"W 109°40'30"W 109°40'0"W 109°39'30"W 109°39'0"W 109°38'30"W

43°59'0"N
43°58'30"N
43°58'0"N
43°57'30"N
43°57'0"N
43°56'30"N
43°56'0"N
43°55'30"N
43°55'0"N
43°54'30"N

43°59'0"N
43°58'30"N
43°58'0"N
43°57'30"N
43°57'0"N
43°56'30"N
43°56'0"N
43°55'30"N
43°55'0"N
43°54'30"N

HARDLUCK FIRE
WY-SHF-251: IR Map

Infrared Map - 07/27/2013
Imagery Date - 07/27/2013
Imagery Time - 0027
Interpreted Total Acres - 4,580 acres
Change in Heat Perimeter - 3,374 acres
Since Last IR
IRIN - Nate Yorgason

Hardluck Legend

-  07/27/2013 0027 Hard Luck IR Heat Perimeter
-  Intense Heat
-  Scattered Heat
-  Isolated Heat

109°48'30"W 109°48'0"W 109°47'30"W 109°47'0"W 109°46'30"W 109°46'0"W 109°45'30"W 109°45'0"W 109°44'30"W 109°44'0"W 109°43'30"W 109°43'0"W 109°42'30"W 109°42'0"W 109°41'30"W 109°41'0"W 109°40'30"W 109°40'0"W 109°39'30"W 109°39'0"W 109°38'30"W