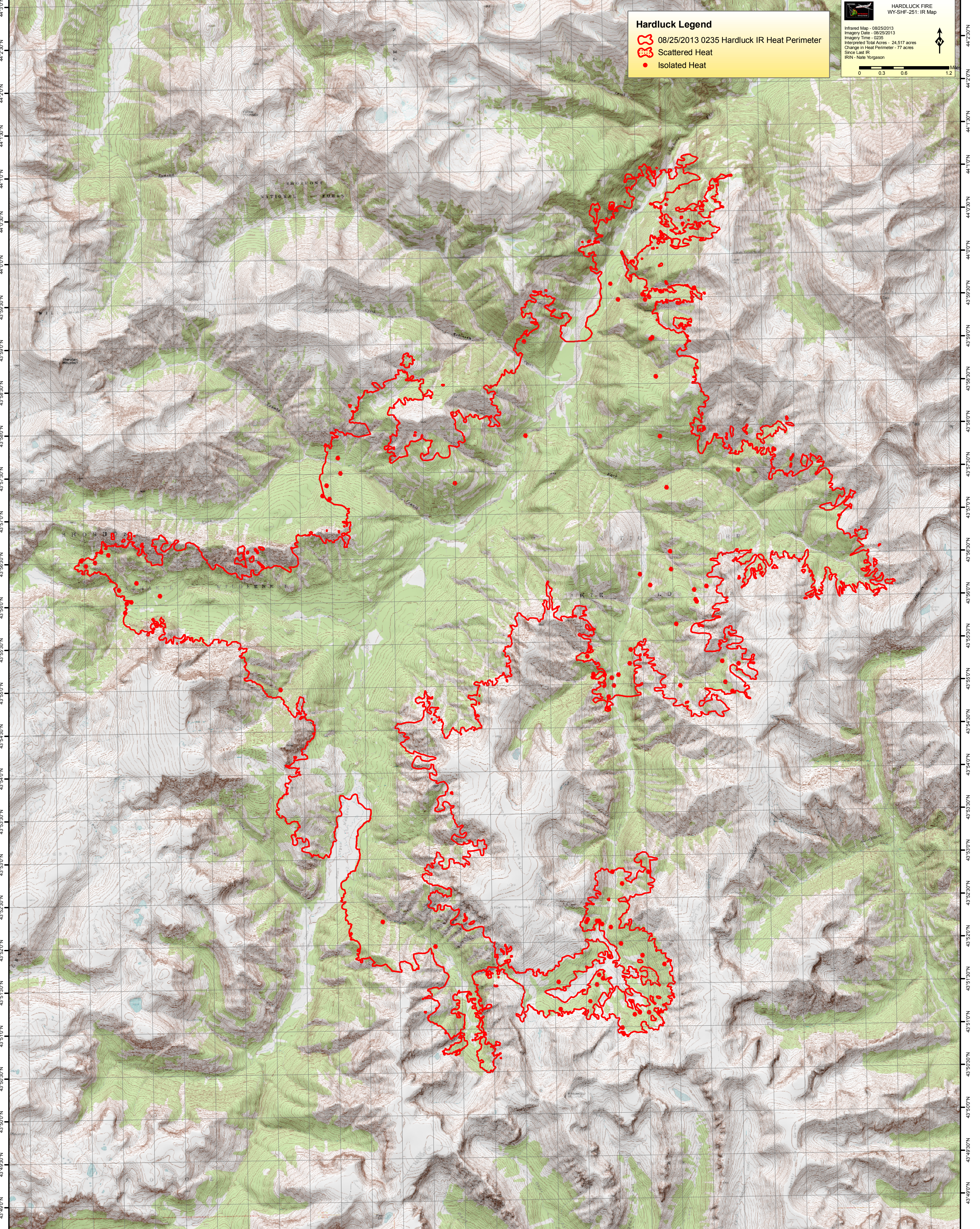


109°51'0"W 109°50'30"W 109°50'0"W 109°49'30"W 109°49'0"W 109°48'30"W 109°48'0"W 109°47'30"W 109°47'0"W 109°46'30"W 109°46'0"W 109°45'30"W 109°45'0"W 109°44'30"W 109°44'0"W 109°43'30"W 109°43'0"W 109°42'30"W 109°42'0"W 109°41'30"W 109°41'0"W 109°40'30"W 109°40'0"W 109°39'30"W 109°39'0"W 109°38'30"W 109°38'0"W 109°37'30"W 109°37'0"W 109°36'30"W 109°36'0"W



Hardluck Legend

- 08/25/2013 0235 Hardluck IR Heat Perimeter
- Scattered Heat
- Isolated Heat

HARDLUCK FIRE
WY-SHF-251: IR Map

Infrared Map - 08/25/2013
Imagery Date - 08/25/2013
Imagery Time - 0235
Interpreted Total Acres - 24,517 acres
Change in Heat Perimeter - 77 acres
Since Last IR
IRIN - Nate Yorgason

0 0.3 0.6 1.2 Miles

109°51'0"W 109°50'30"W 109°50'0"W 109°49'30"W 109°49'0"W 109°48'30"W 109°48'0"W 109°47'30"W 109°47'0"W 109°46'30"W 109°46'0"W 109°45'30"W 109°45'0"W 109°44'30"W 109°44'0"W 109°43'30"W 109°43'0"W 109°42'30"W 109°42'0"W 109°41'30"W 109°41'0"W 109°40'30"W 109°40'0"W 109°39'30"W 109°39'0"W 109°38'30"W 109°38'0"W 109°37'30"W 109°37'0"W 109°36'30"W 109°36'0"W