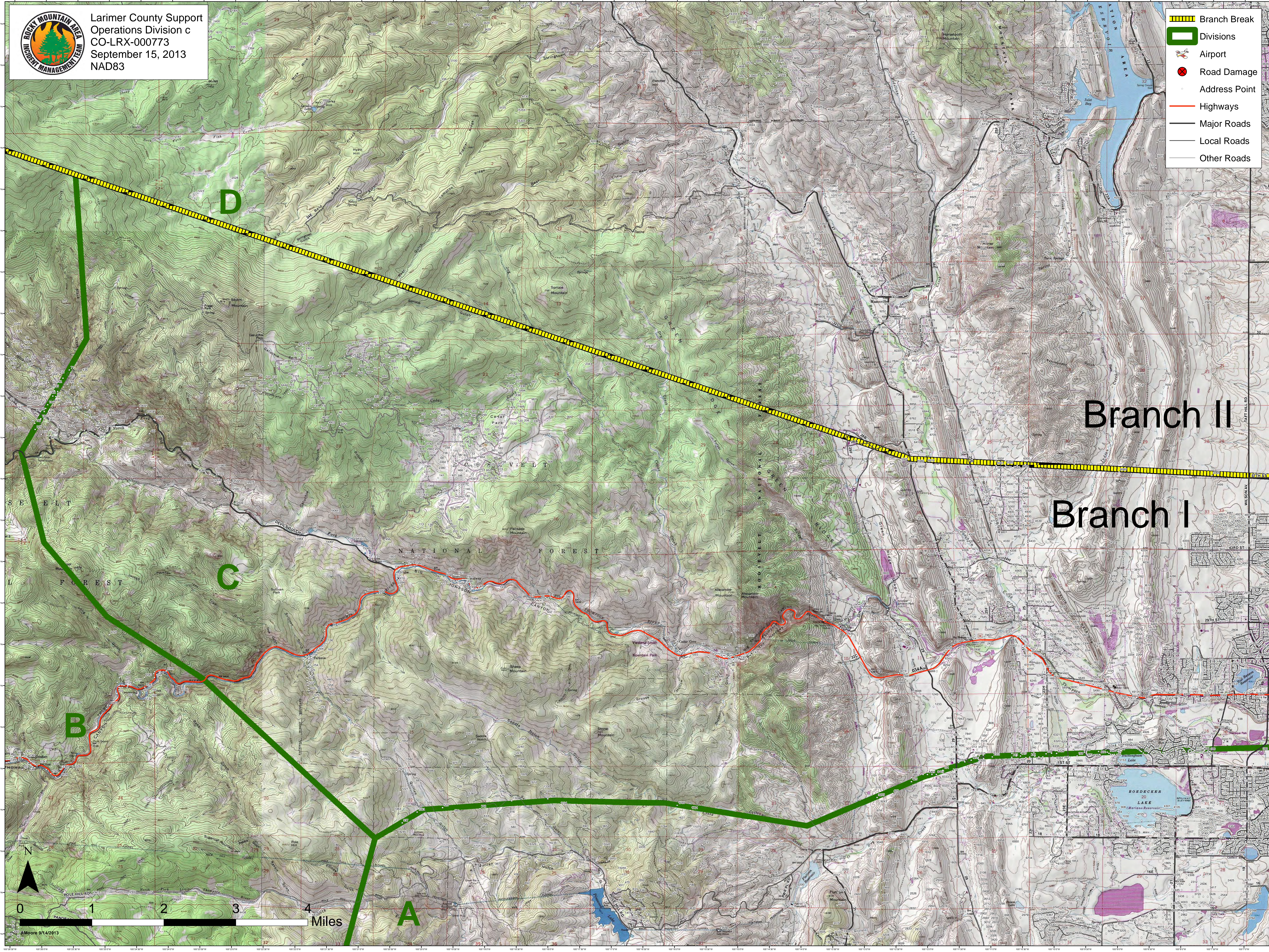




Larimer County Support  
Operations Division c  
CO-LRX-000773  
September 15, 2013  
NAD83

- Branch Break
- Divisions
- Airport
- Road Damage
- Address Point
- Highways
- Major Roads
- Local Roads
- Other Roads



Branch II  
Branch I

0 1 2 3 4 Miles

AMoore 9/14/2013