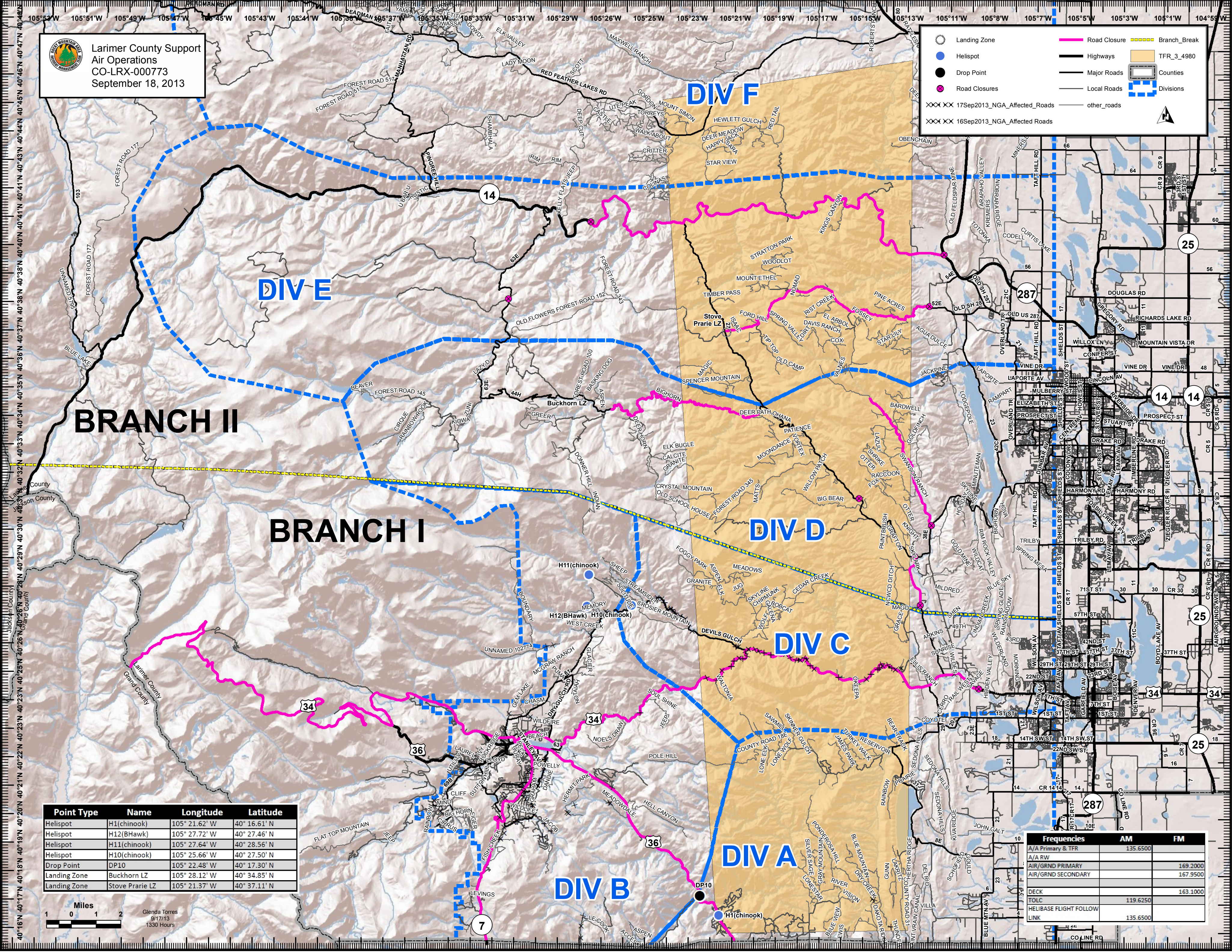




Larimer County Support
Air Operations
CO-LRX-000773
September 18, 2013

- Landing Zone
- Helispot
- Drop Point
- Road Closures
- Road Closure
- Highways
- Major Roads
- Local Roads
- other_roads
- Branch_Break
- TFR_3_4980
- Counties
- Divisions

XXX XX 17Sep2013_NGA_Affected_Roads
XXX XX 16Sep2013_NGA_Affected_Roads



Point Type	Name	Longitude	Latitude
Helispot	H1(chinook)	105° 21.62' W	40° 16.61' N
Helispot	H12(BHawk)	105° 27.72' W	40° 27.46' N
Helispot	H11(chinook)	105° 27.64' W	40° 28.56' N
Helispot	H10(chinook)	105° 25.66' W	40° 27.50' N
Drop Point	DP10	105° 22.48' W	40° 17.30' N
Landing Zone	Buckhorn LZ	105° 28.12' W	40° 34.85' N
Landing Zone	Stove Prarie LZ	105° 21.37' W	40° 37.11' N



Glenda Torres
9/17/13
1330 Hours

	Frequencies	
	AM	FM
A/A Primary & TFR	135.6500	
A/A RW		
AIR/GRND PRIMARY		169.2000
AIR/GRND SECONDARY		167.9500
DECK		163.1000
TOLC	119.6250	
HELIBASE FLIGHT FOLLOW		
LINK	135.6500	