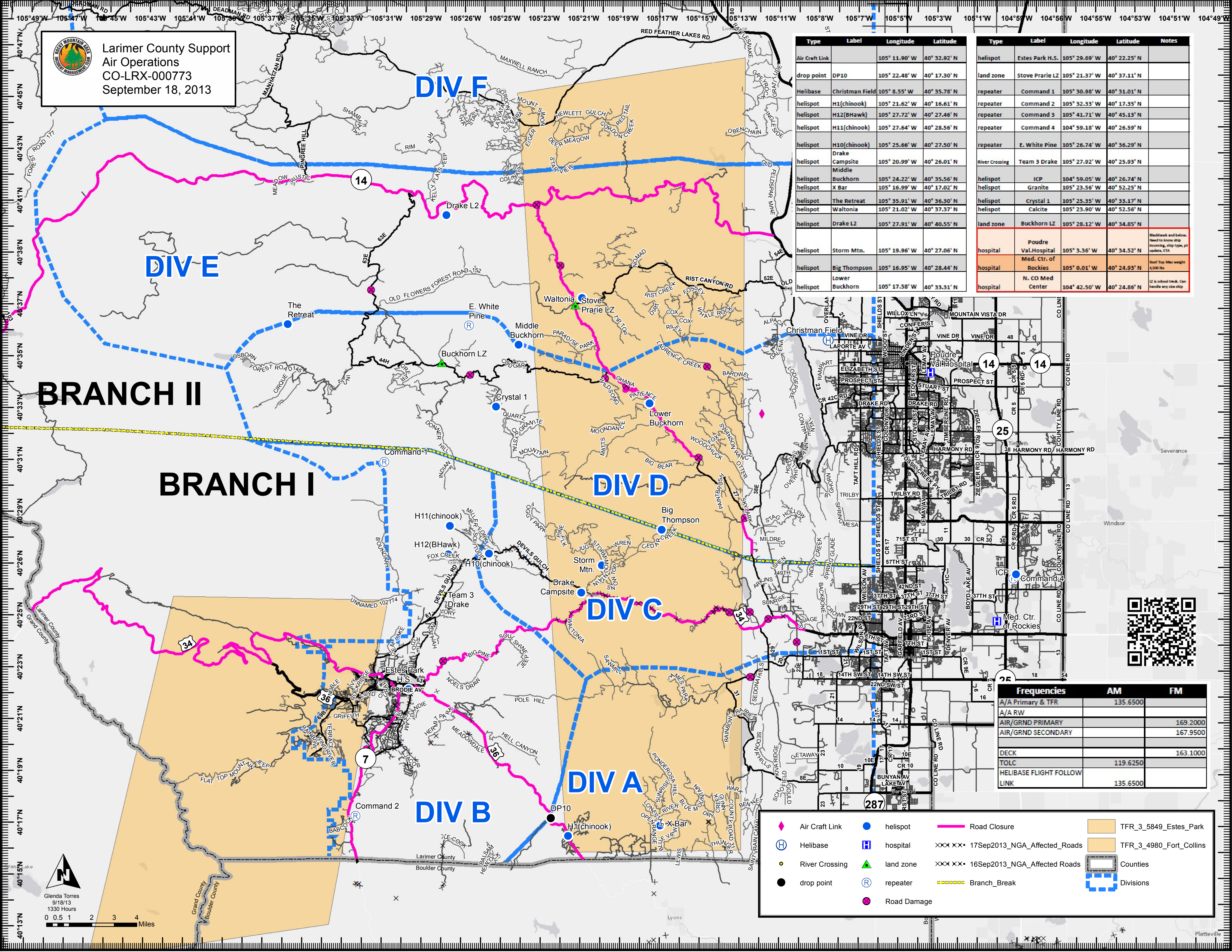




Larimer County Support
Air Operations
CO-LRX-000773
September 18, 2013

Type	Label	Longitude	Latitude
Air Craft Link		105° 11.90' W	40° 32.92' N
drop point	DP10	105° 22.48' W	40° 17.30' N
Helibase	Christman Field	105° 8.55' W	40° 35.78' N
helispot	H1(chinook)	105° 21.62' W	40° 16.61' N
helispot	H12(BHawk)	105° 27.72' W	40° 27.46' N
helispot	H11(chinook)	105° 27.64' W	40° 28.56' N
helispot	H10(chinook)	105° 25.66' W	40° 27.50' N
helispot	Drake Campsite	105° 20.99' W	40° 26.01' N
helispot	Buckhorn	105° 24.22' W	40° 35.56' N
helispot	X Bar	105° 16.99' W	40° 17.02' N
helispot	The Retreat	105° 35.91' W	40° 36.30' N
helispot	Waltonia	105° 21.02' W	40° 37.37' N
helispot	Drake L2	105° 27.91' W	40° 40.55' N
helispot	Storm Mtn.	105° 19.96' W	40° 27.06' N
helispot	Big Thompson Lower	105° 16.95' W	40° 28.44' N
helispot	Buckhorn	105° 17.58' W	40° 33.31' N

Type	Label	Longitude	Latitude	Notes
helispot	Estes Park H.S.	105° 29.69' W	40° 22.25' N	
land zone	Stove Prairie LZ	105° 21.37' W	40° 37.11' N	
repeater	Command 1	105° 30.98' W	40° 31.01' N	
repeater	Command 2	105° 32.33' W	40° 17.35' N	
repeater	Command 3	105° 41.71' W	40° 45.13' N	
repeater	Command 4	104° 59.18' W	40° 26.59' N	
repeater	E. White Pine	105° 26.74' W	40° 36.29' N	
River Crossing	Team 3 Drake	105° 27.92' W	40° 25.93' N	
helispot	ICP	104° 59.05' W	40° 26.74' N	
helispot	Granite	105° 23.56' W	40° 52.25' N	
helispot	Crystal 1	105° 25.35' W	40° 33.17' N	
helispot	Calcite	105° 23.90' W	40° 52.56' N	
land zone	Buckhorn LZ	105° 28.12' W	40° 34.85' N	
hospital	Poudre Val.Hospital	105° 3.36' W	40° 34.52' N	Blackhawk and below. Need to know ship, bearing, ship type, pt updates, ETA
hospital	Med. Ctr. of Rockies	105° 0.01' W	40° 24.93' N	Roof Top Max weight 4,500 lbs
hospital	N. CO Med Center	104° 42.50' W	40° 24.86' N	12 in school truck. Can handle any size ship



Frequencies		AM	FM
A/A Primary & TFR		135.6500	
A/A RW			
AIR/GRND PRIMARY			169.2000
AIR/GRND SECONDARY			167.9500
DECK			163.1000
TOLC		119.6250	
HELIBASE FLIGHT FOLLOW LINK		135.6500	

◆ Air Craft Link	● helispot	— Road Closure	■ TFR_3_5849_Estes_Park
⊕ Helibase	⊠ hospital	××××× 17Sep2013_NGA_Affected_Roads	■ TFR_3_4980_Fort_Collins
● River Crossing	▲ land zone	××××× 16Sep2013_NGA_Affected_Roads	▭ Counties
● drop point	Ⓡ repeater	— Branch_Break	▭ Divisions
	● Road Damage		



Glenda Torres
9/18/13
1330 Hours
0 0.5 1 2 3 4 Miles