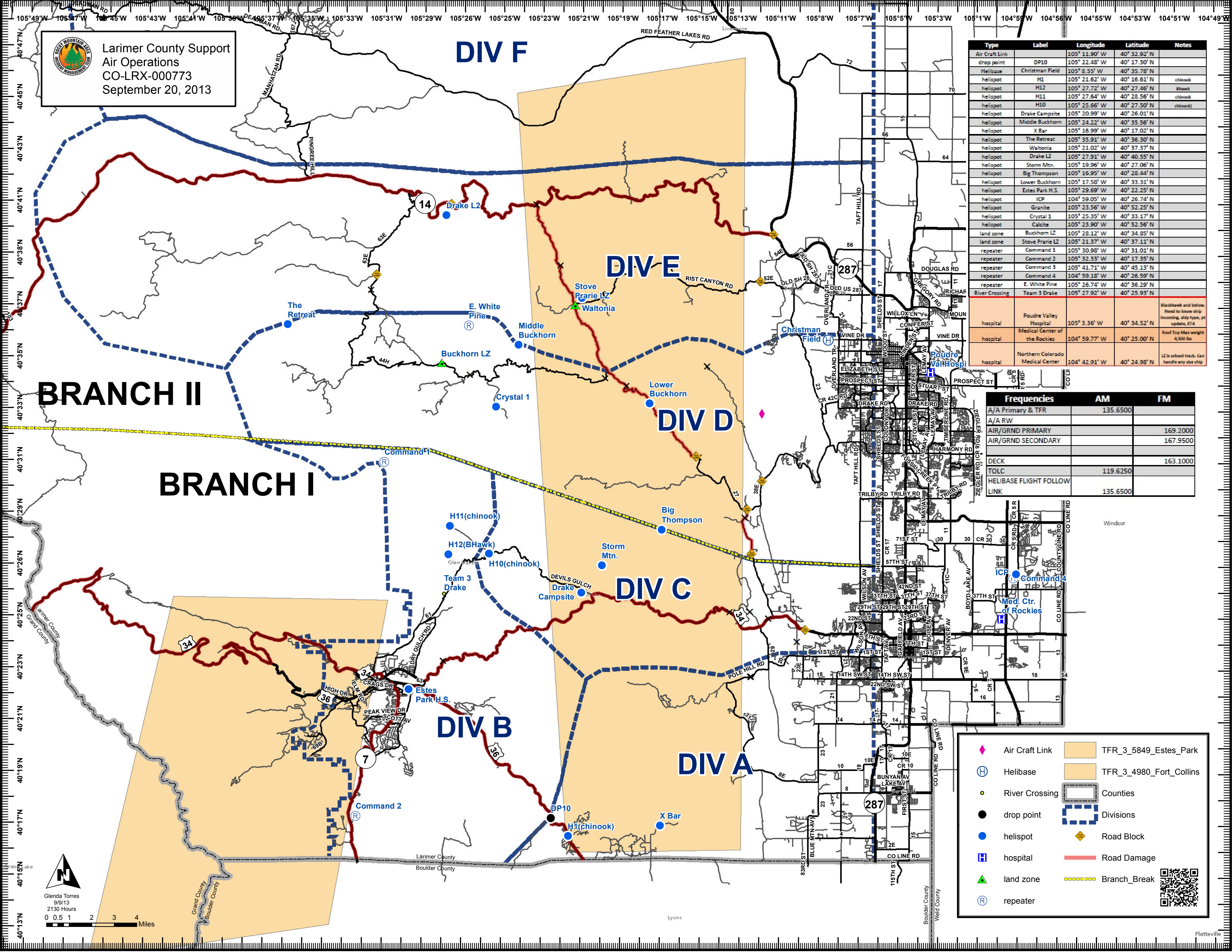


Larimer County Support
Air Operations
CO-LRX-000773
September 20, 2013

Type	Label	Longitude	Latitude	Notes
Air Craft Link	DP10	105° 22.48' W	40° 17.30' N	
Helibase	Christman Field	105° 8.55' W	40° 35.78' N	
helispot	H1	105° 21.62' W	40° 16.61' N	chirook
helispot	H12	105° 27.72' W	40° 27.46' N	Bhawk
helispot	H11	105° 27.64' W	40° 28.56' N	chirook
helispot	H10	105° 25.66' W	40° 27.50' N	chirook
helispot	Drake Campsite	105° 20.99' W	40° 26.01' N	
helispot	Middle Buckhorn	105° 24.22' W	40° 35.56' N	
helispot	X Bar	105° 16.99' W	40° 17.02' N	
helispot	The Retreat	105° 35.91' W	40° 36.30' N	
helispot	Waltonia	105° 21.02' W	40° 37.37' N	
helispot	Drake LZ	105° 27.91' W	40° 40.55' N	
helispot	Storm Mtn.	105° 19.96' W	40° 27.06' N	
helispot	Big Thompson	105° 16.95' W	40° 28.44' N	
helispot	Lower Buckhorn	105° 17.58' W	40° 33.31' N	
helispot	Estes Park H.S.	105° 29.69' W	40° 22.25' N	
helispot	ICP	104° 59.05' W	40° 26.74' N	
helispot	Granite	105° 23.56' W	40° 52.25' N	
helispot	Crystal 1	105° 25.35' W	40° 33.17' N	
helispot	Caliche	105° 23.90' W	40° 52.56' N	
land zone	Buckhorn LZ	105° 28.12' W	40° 34.85' N	
land zone	Stove Prairie LZ	105° 21.37' W	40° 37.11' N	
repeater	Command 1	105° 30.98' W	40° 31.01' N	
repeater	Command 2	105° 32.33' W	40° 17.35' N	
repeater	Command 3	105° 41.71' W	40° 45.13' N	
repeater	Command 4	104° 59.18' W	40° 26.59' N	
repeater	E. White Pine	105° 26.74' W	40° 36.29' N	
River Crossing	Team 3 Drake	105° 27.92' W	40° 25.93' N	
hospital	Poudre Valley Hospital	105° 3.36' W	40° 34.52' N	Blackhawk and below. Need to know ship incoming, ship type, pt update, ETA
hospital	Medical Center of the Rockies	104° 59.77' W	40° 25.00' N	Roof Top Max weight 4,500 lbs
hospital	Northern Colorado Medical Center	104° 42.91' W	40° 24.98' N	LZ is school track. Can handle any size ship

Frequencies	AM	FM
A/A Primary & TFR	135.6500	
A/A RW		169.2000
AIR/GRND PRIMARY		167.9500
AIR/GRND SECONDARY		167.9500
DECK		163.1000
TOLC	119.6250	
HELIBASE FLIGHT FOLLOW LINK	135.6500	

◆ Air Craft Link	▭ TFR_3_5849_Estes_Park
⊕ Helibase	▭ TFR_3_4980_Fort_Collins
● River Crossing	▭ Counties
● drop point	▭ Divisions
● helispot	◆ Road Block
⊠ hospital	— Road Damage
▲ land zone	— Branch_Break
Ⓡ repeater	QR



Glenda Torres
9/9/13
2130 Hours
0 0.5 1 2 3 4 Miles

