

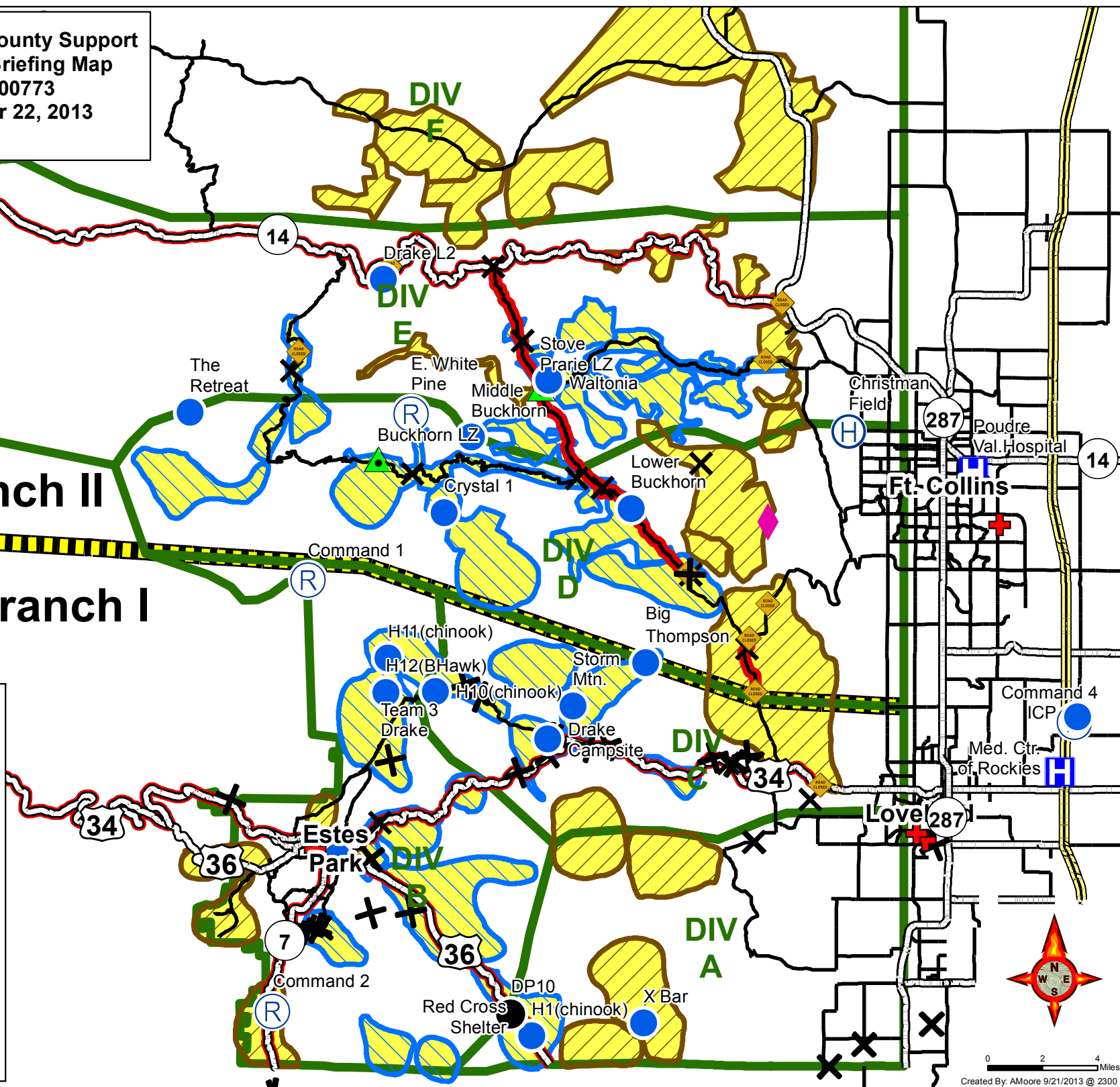


Larimer County Support  
 Morning Briefing Map  
 CO-LRX-000773  
 September 22, 2013  
 NAD83

Branch II

Branch I

- |  |                |  |                    |
|--|----------------|--|--------------------|
|  | Branch Break   |  | Interstate         |
|  | Divisions      |  | Highways           |
|  | Air Craft Link |  | Major Roads        |
|  | Helibase       |  | Closed Roads       |
|  | drop point     |  | Inventory Areas    |
|  | helispot       |  | USAR Survey Areas  |
|  | hospital       |  | No Need To Search  |
|  | land zone      |  | Surveyed           |
|  | repeater       |  | Un Surveyed        |
|  |                |  | Evacuation Centers |



0 2 4 Miles