

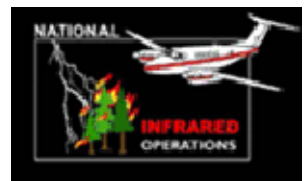
107°16'0"W 107°15'0"W 107°14'0"W 107°13'0"W 107°12'0"W 107°11'0"W 107°10'0"W 107°9'0"W 107°8'0"W 107°7'0"W 107°6'0"W 107°5'0"W 107°4'0"W 107°3'0"W 107°2'0"W 107°1'0"W 107°0'0"W 106°59'0"W

37°56'0"N  
37°55'0"N  
37°54'0"N  
37°53'0"N  
37°52'0"N  
37°51'0"N  
37°50'0"N  
37°49'0"N  
37°48'0"N  
37°47'0"N  
37°46'0"N  
37°45'0"N  
37°44'0"N  
37°43'0"N  
37°42'0"N  
37°41'0"N  
37°40'0"N  
37°39'0"N  
37°38'0"N  
37°37'0"N  
37°36'0"N  
37°35'0"N  
37°34'0"N

37°56'0"N  
37°55'0"N  
37°54'0"N  
37°53'0"N  
37°52'0"N  
37°51'0"N  
37°50'0"N  
37°49'0"N  
37°48'0"N  
37°47'0"N  
37°46'0"N  
37°45'0"N  
37°44'0"N  
37°43'0"N  
37°42'0"N  
37°41'0"N  
37°40'0"N  
37°39'0"N  
37°38'0"N  
37°37'0"N  
37°36'0"N  
37°35'0"N  
37°34'0"N

**Abnormal Heat Detect Point #2**  
**Infrared Imagery Map**  
**Imagery Flown June 29, 2013 - 2231 MDT hours**  
**IRIN: Bob Brantlinger**

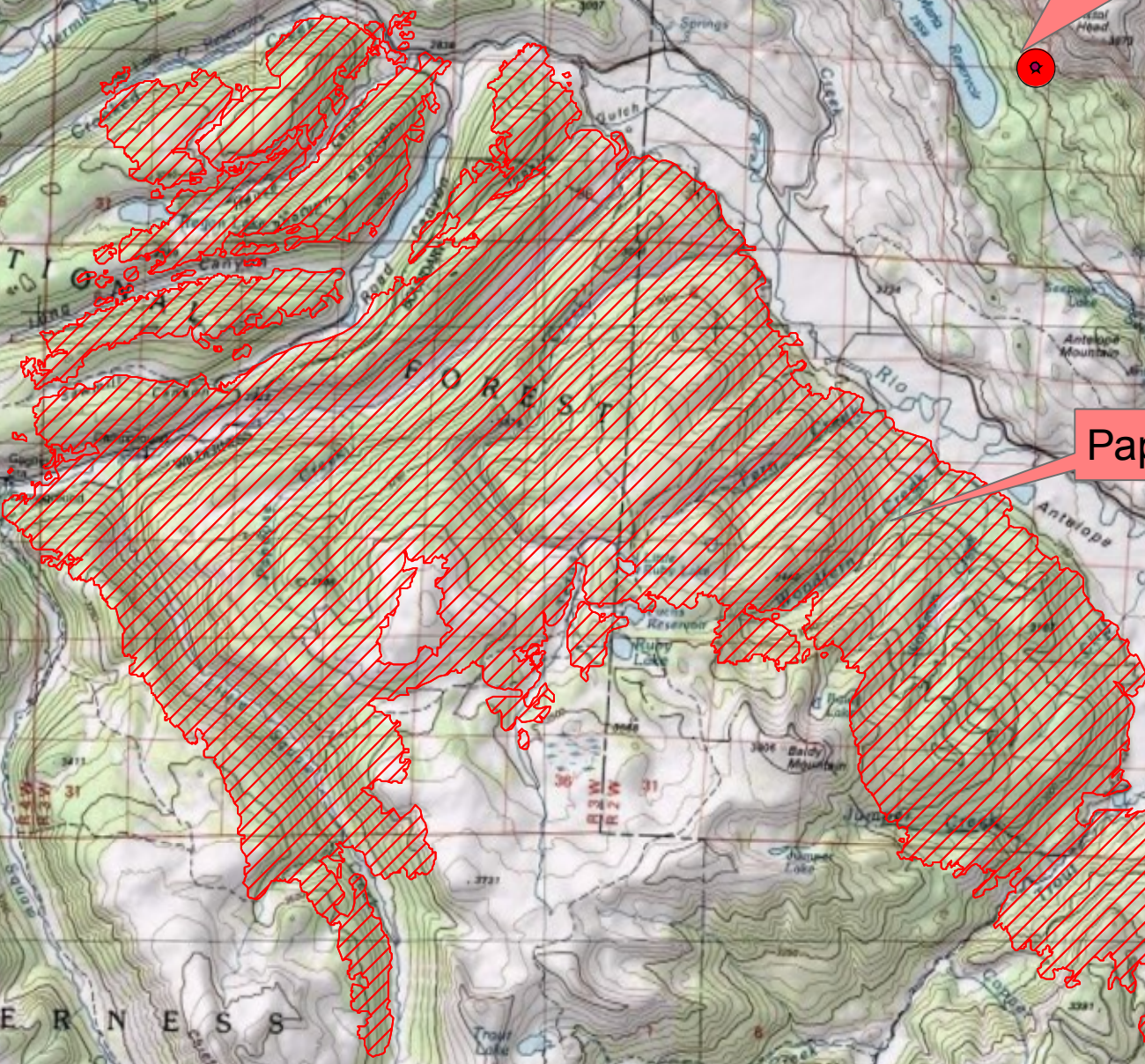
0 0.426.85 1.7 2.55 3.4 4.25 Miles



Heat Detection - Point # 2  
Latitude - 107° 4' 3.001  
Longitude - 37° 47' 20.539



Papoose Fire



107°15'0"W 107°14'0"W 107°13'0"W 107°12'0"W 107°11'0"W 107°10'0"W 107°9'0"W 107°8'0"W 107°7'0"W 107°6'0"W 107°5'0"W 107°4'0"W 107°3'0"W 107°2'0"W 107°1'0"W 107°0'0"W 106°59'0"W 106°58'0"W