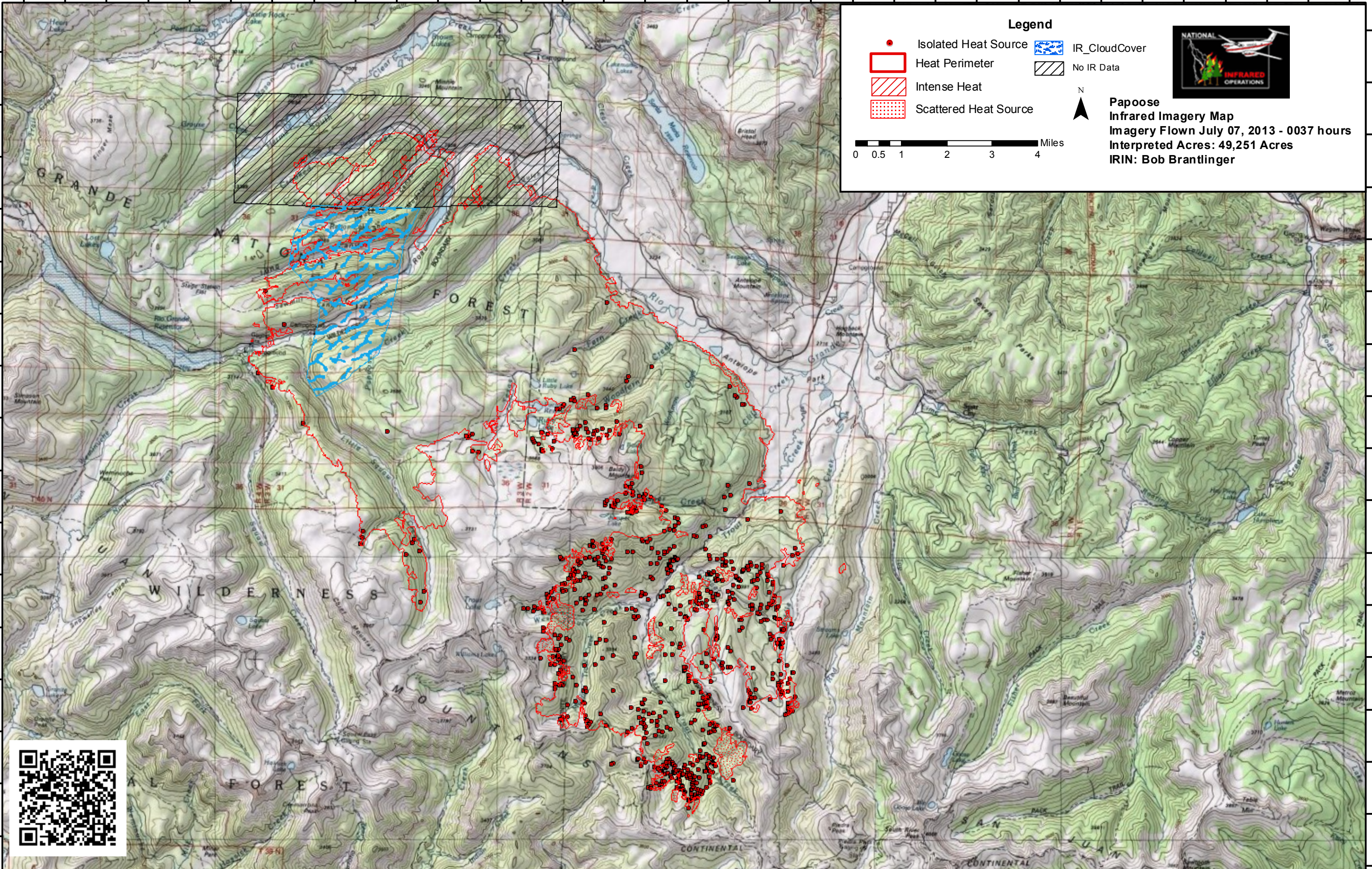


107°21'0"W 107°19'0"W 107°17'0"W 107°15'0"W 107°13'0"W 107°11'0"W 107°9'0"W 107°7'0"W 107°5'0"W 107°3'0"W 107°1'0"W 106°59'0"W 106°57'0"W 106°55'0"W 106°53'0"W 106°51'0"W 106°49'0"W

37°49'0"N  
37°48'0"N  
37°47'0"N  
37°46'0"N  
37°45'0"N  
37°44'0"N  
37°43'0"N  
37°42'0"N  
37°41'0"N  
37°40'0"N  
37°39'0"N  
37°38'0"N  
37°37'0"N  
37°36'0"N  
37°35'0"N  
37°34'0"N

37°50'0"N  
37°49'0"N  
37°48'0"N  
37°47'0"N  
37°46'0"N  
37°45'0"N  
37°44'0"N  
37°43'0"N  
37°42'0"N  
37°41'0"N  
37°40'0"N  
37°39'0"N  
37°38'0"N  
37°37'0"N  
37°36'0"N  
37°35'0"N  
37°34'0"N



**Legend**

- Isolated Heat Source
- ▭ Heat Perimeter
- ▨ Intense Heat
- ▤ Scattered Heat Source
- ▨ IR\_CloudCover
- ▤ No IR Data

N

**Papoose Infrared Imagery Map**  
 Imagery Flown July 07, 2013 - 0037 hours  
 Interpreted Acres: 49,251 Acres  
 IRIN: Bob Brantlinger

0 0.5 1 2 3 4 Miles



107°19'0"W 107°17'0"W 107°15'0"W 107°13'0"W 107°11'0"W 107°9'0"W 107°7'0"W 107°5'0"W 107°3'0"W 107°1'0"W 106°59'0"W 106°57'0"W 106°55'0"W 106°53'0"W 106°51'0"W 106°49'0"W