

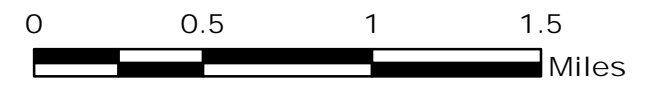
# ROYAL GORGE CO-RGD-000328

## Operations Map 6/14/13

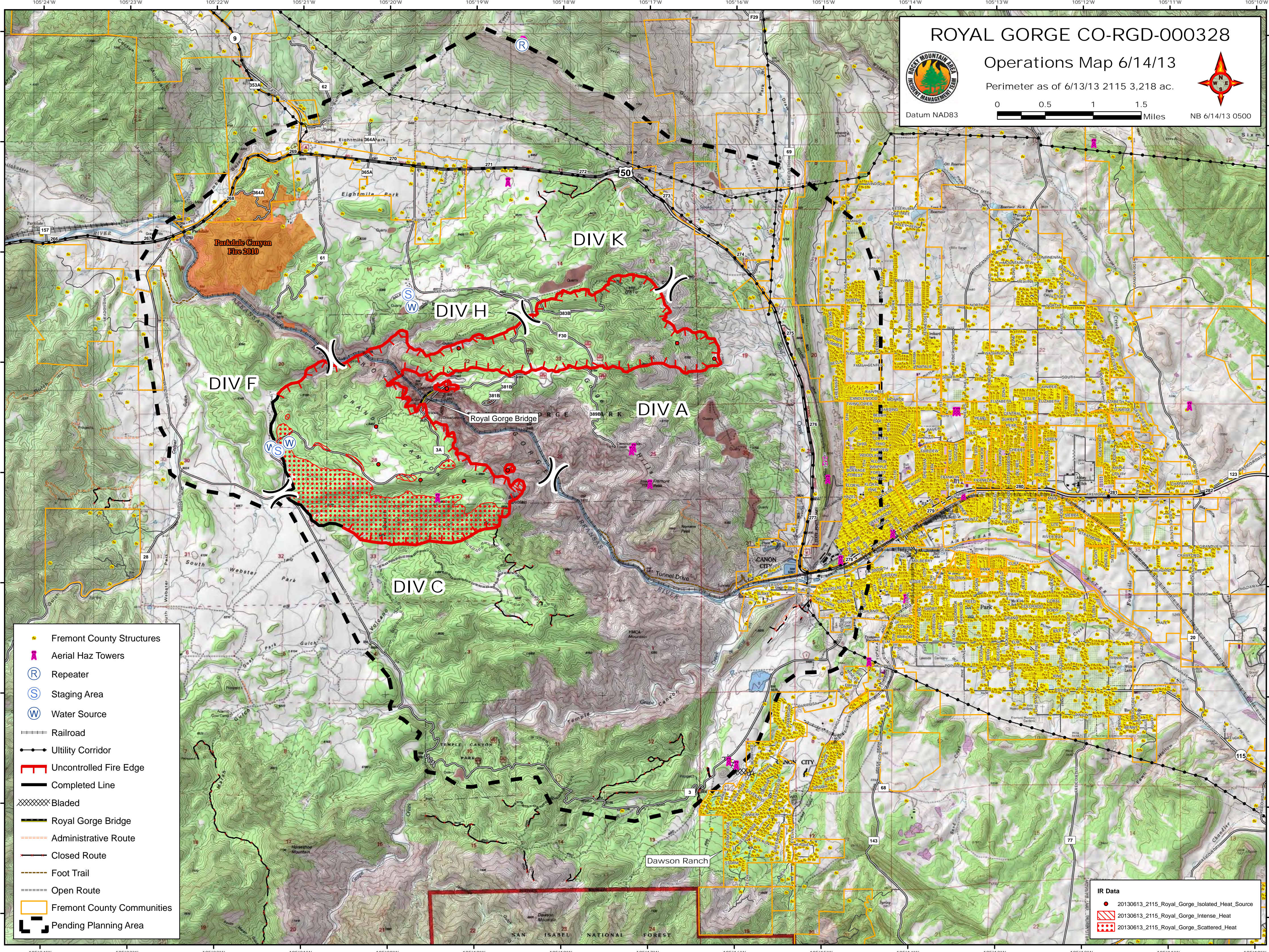
Perimeter as of 6/13/13 2115 3,218 ac.



Datum NAD83



NB 6/14/13 0500



- Fremont County Structures
- ✳ Aerial Haz Towers
- Ⓡ Repeater
- Ⓢ Staging Area
- Ⓦ Water Source
- +— Railroad
- Utility Corridor
- +— Uncontrolled Fire Edge
- +— Completed Line
- XXXX Bladed
- +— Royal Gorge Bridge
- +— Administrative Route
- +— Closed Route
- +— Foot Trail
- +— Open Route
- Fremont County Communities
- Pending Planning Area

- ### IR Data
- 20130613\_2115\_Royal\_Gorge\_Isolated\_Heat\_Source
  - ▨ 20130613\_2115\_Royal\_Gorge\_Intense\_Heat
  - ▨ 20130613\_2115\_Royal\_Gorge\_Scattered\_Heat