

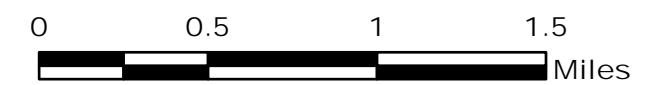
ROYAL GORGE CO-RGD-000328

Operations Map 6/15/13

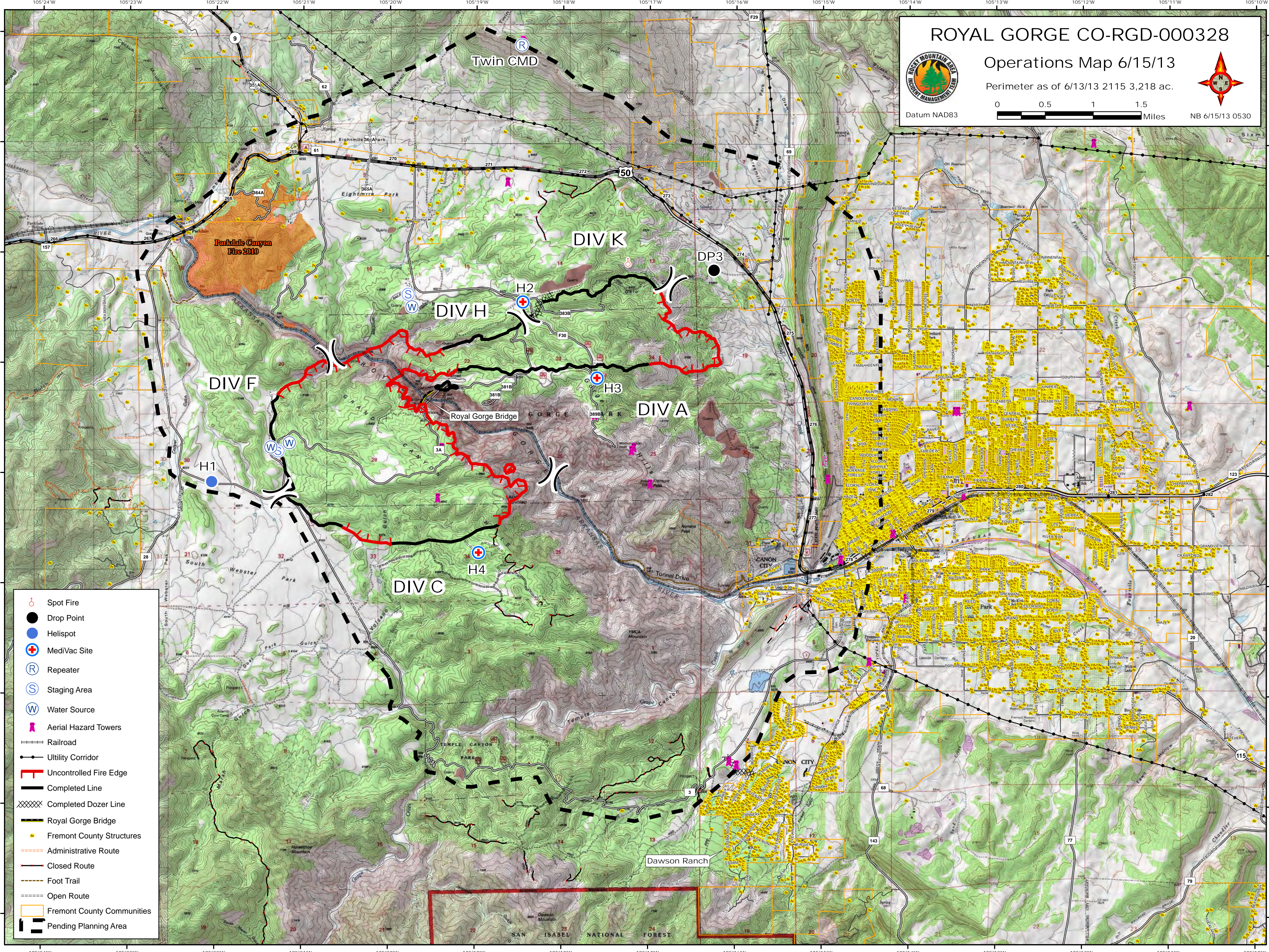
Perimeter as of 6/13/13 2115 3,218 ac.



Datum NAD83



NB 6/15/13 0530



- Spot Fire
- Drop Point
- Helispot
- MediVac Site
- Repeater
- Staging Area
- Water Source
- Aerial Hazard Towers
- Railroad
- Utility Corridor
- Uncontrolled Fire Edge
- Completed Line
- Completed Dozer Line
- Royal Gorge Bridge
- Fremont County Structures
- Administrative Route
- Closed Route
- Foot Trail
- Open Route
- Fremont County Communities
- Pending Planning Area