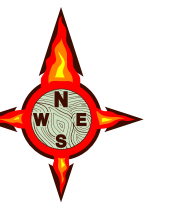


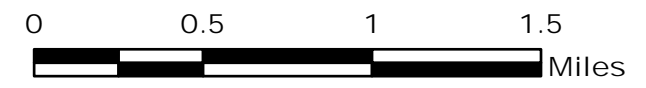
ROYAL GORGE CO-RGD-000328

Operations Map 6/16/13

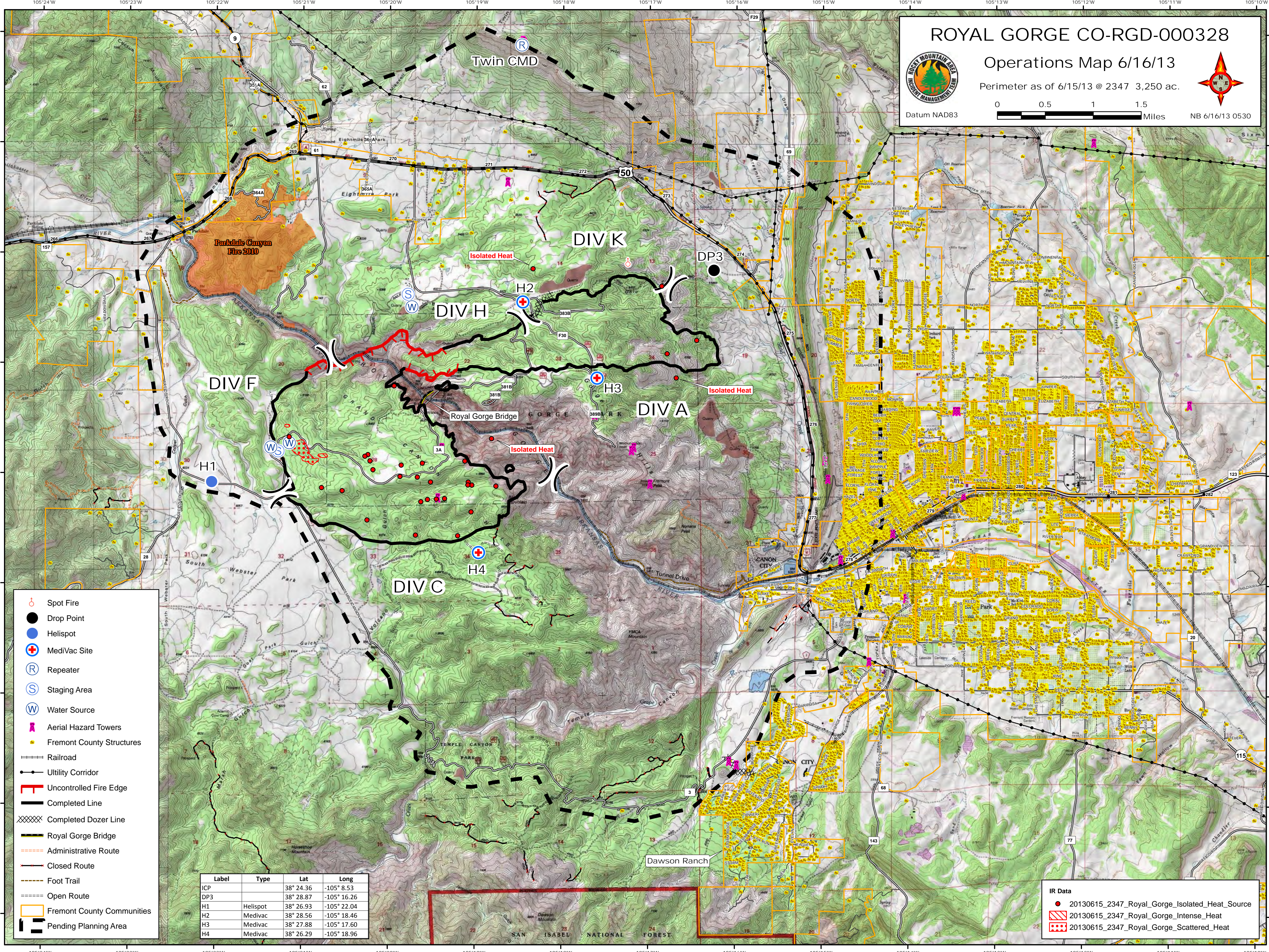
Perimeter as of 6/15/13 @ 2347 3,250 ac.



Datum NAD83



NB 6/16/13 0530



- Spot Fire
- Drop Point
- Helispot
- MediVac Site
- Repeater
- Staging Area
- Water Source
- Aerial Hazard Towers
- Fremont County Structures
- Railroad
- Utility Corridor
- Uncontrolled Fire Edge
- Completed Line
- Completed Dozer Line
- Royal Gorge Bridge
- Administrative Route
- Closed Route
- Foot Trail
- Open Route
- Fremont County Communities
- Pending Planning Area

Label	Type	Lat	Long
ICP		38° 24.36	-105° 8.53
DP3		38° 28.87	-105° 16.26
H1	Helispot	38° 26.93	-105° 22.04
H2	Medivac	38° 28.56	-105° 18.46
H3	Medivac	38° 27.88	-105° 17.60
H4	Medivac	38° 26.29	-105° 18.96

- IR Data**
- 20130615_2347_Royal_Gorge_Isolated_Heat_Source
 - 20130615_2347_Royal_Gorge_Intense_Heat
 - 20130615_2347_Royal_Gorge_Scattered_Heat