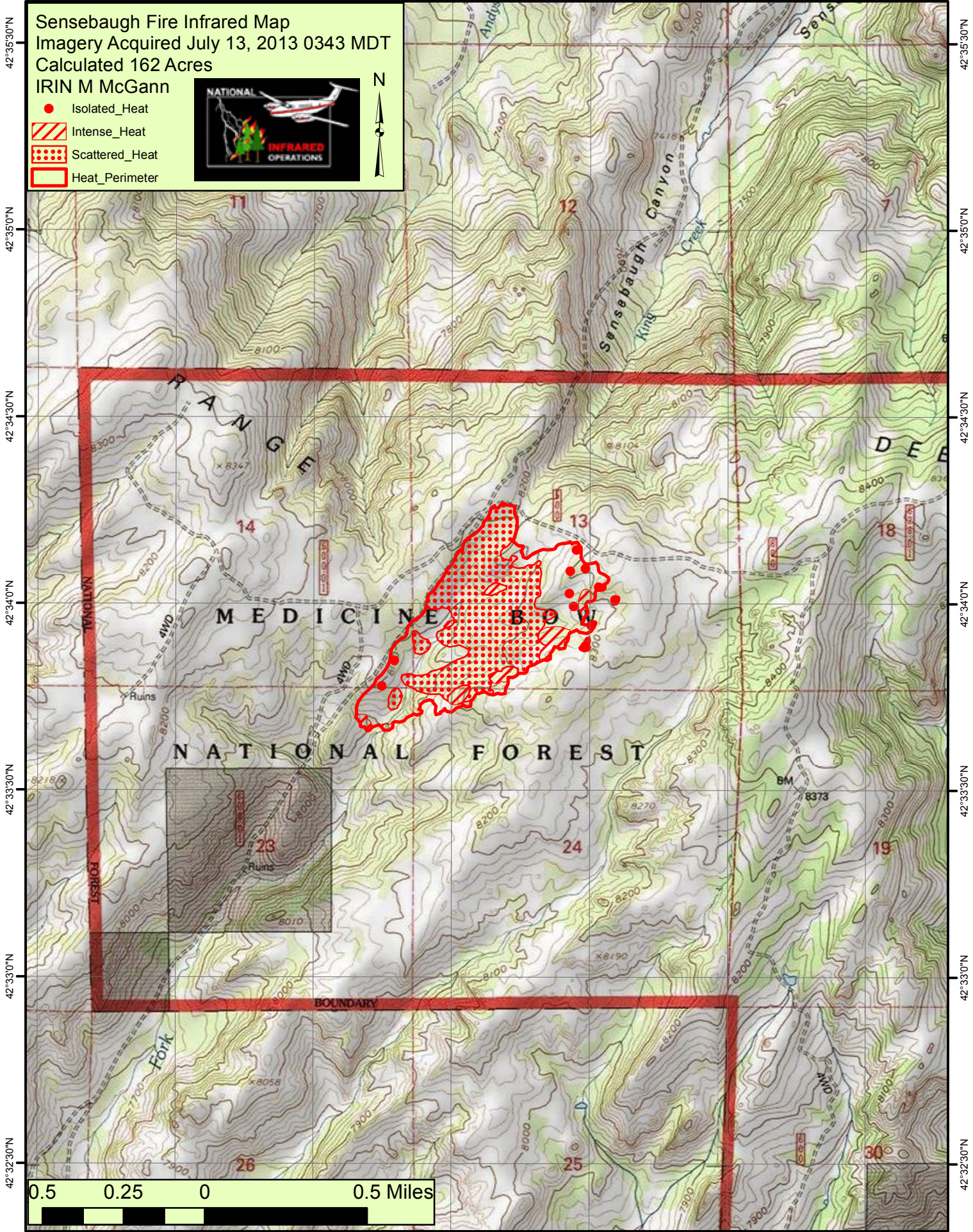


106°10'0"W 106°9'30"W 106°9'0"W 106°8'30"W 106°8'0"W 106°7'30"W 106°7'0"W



Sensebaugh Fire Infrared Map
Imagery Acquired July 13, 2013 0343 MDT
Calculated 162 Acres

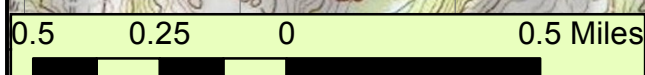
IRIN M McGann

- Isolated_Heat
- Intense_Heat
- Scattered_Heat
- Heat_Perimeter



42°35'30"N
42°35'0"N
42°34'30"N
42°34'0"N
42°33'30"N
42°33'0"N
42°32'30"N

42°35'30"N
42°35'0"N
42°34'30"N
42°34'0"N
42°33'30"N
42°33'0"N
42°32'30"N



106°10'0"W 106°9'30"W 106°9'0"W 106°8'30"W 106°8'0"W 106°7'30"W 106°7'0"W