

106°51'0"W

106°50'0"W

106°49'0"W

106°48'0"W

37°28'0"N

37°27'0"N

37°26'0"N

37°25'0"N

37°24'0"N

37°28'0"N

37°27'0"N

37°26'0"N

37°25'0"N

37°24'0"N

West Fork Complex Infrared Map-Windy Pass Image Acquired June 16, 2013 at 2210 MDT

Calculated 129 Acres

IRIN M McGann

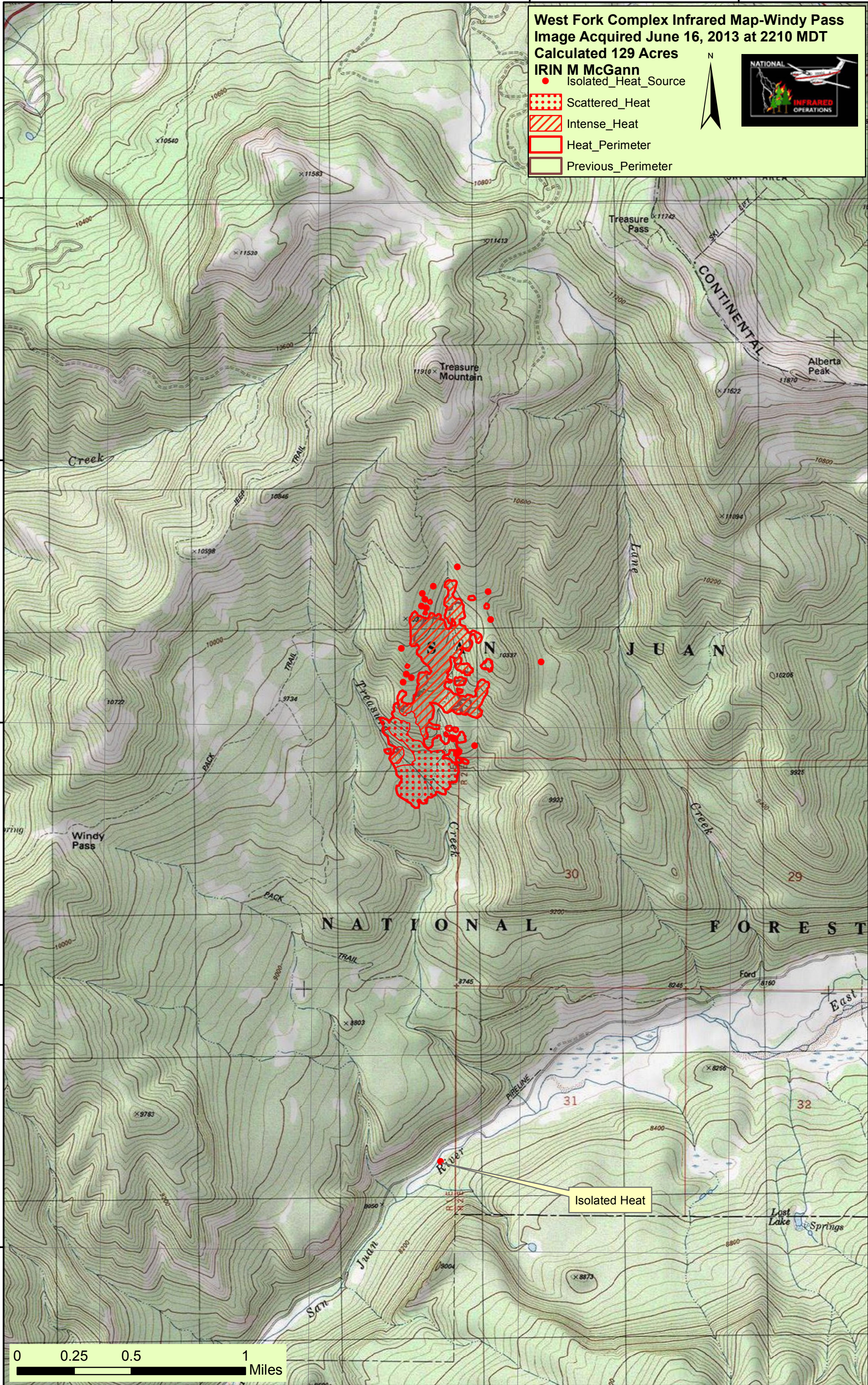
● Isolated_Heat_Source

▨ Scattered_Heat

▨ Intense_Heat

▭ Heat_Perimeter

▭ Previous_Perimeter



Isolated Heat

0 0.25 0.5 1 Miles

106°51'0"W

106°50'0"W

106°49'0"W

106°48'0"W