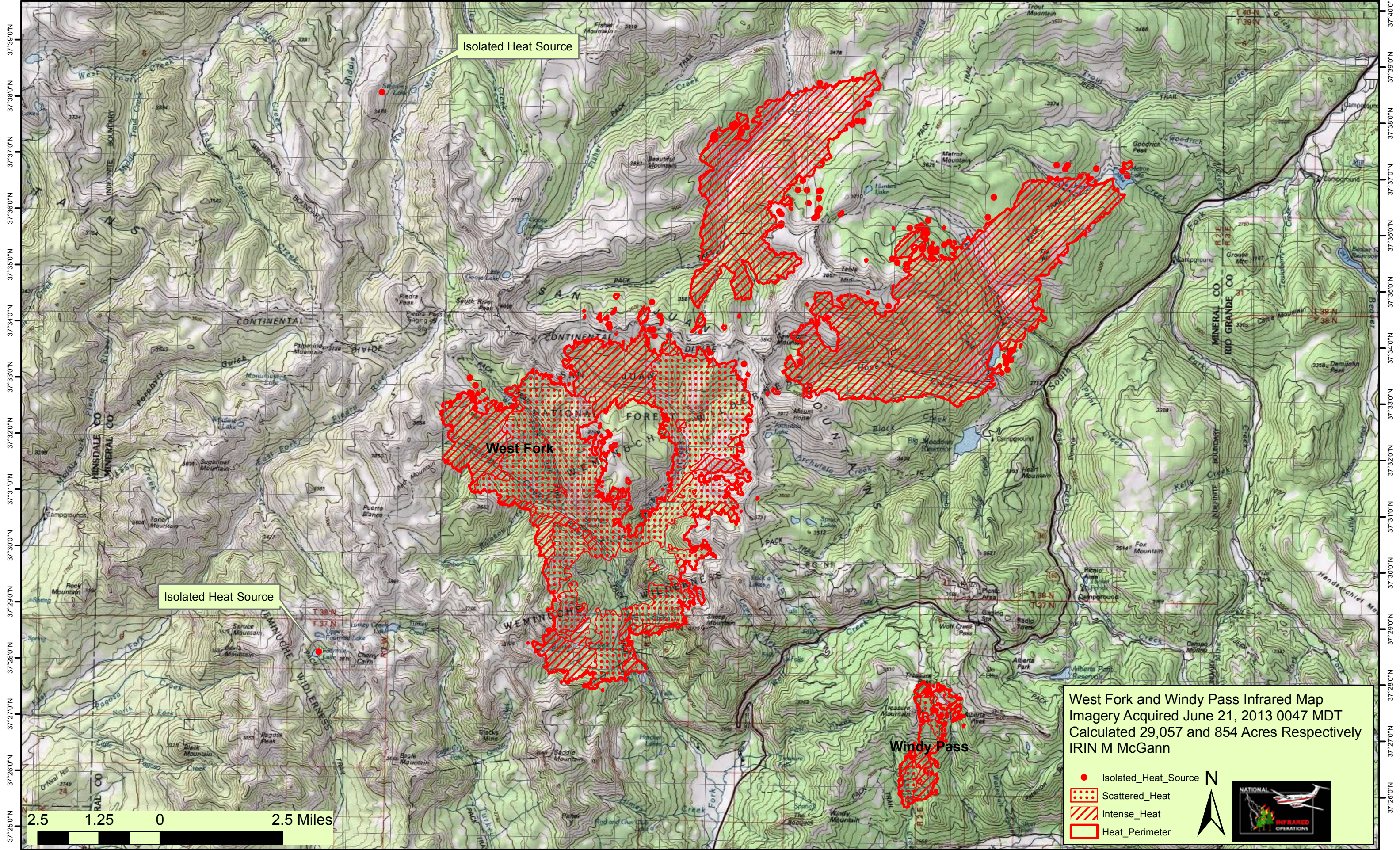


107°9'0"W 107°8'0"W 107°7'0"W 107°6'0"W 107°5'0"W 107°4'0"W 107°3'0"W 107°2'0"W 107°1'0"W 107°0'0"W 106°59'0"W 106°58'0"W 106°57'0"W 106°56'0"W 106°55'0"W 106°54'0"W 106°53'0"W 106°52'0"W 106°51'0"W 106°50'0"W 106°49'0"W 106°48'0"W 106°47'0"W 106°46'0"W 106°45'0"W 106°44'0"W 106°43'0"W 106°42'0"W 106°41'0"W 106°40'0"W



Isolated Heat Source

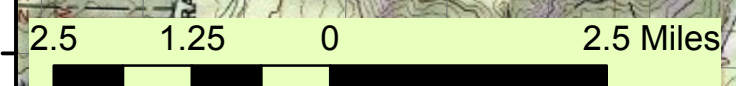
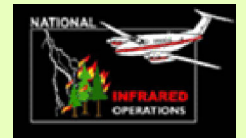
Isolated Heat Source

West Fork

Windy Pass

West Fork and Windy Pass Infrared Map  
Imagery Acquired June 21, 2013 0047 MDT  
Calculated 29,057 and 854 Acres Respectively  
IRIN M McGann

- Isolated\_Heat\_Source
- Scattered\_Heat
- Intense\_Heat
- Heat\_Perimeter



107°9'0"W 107°8'0"W 107°7'0"W 107°6'0"W 107°5'0"W 107°4'0"W 107°3'0"W 107°2'0"W 107°1'0"W 107°0'0"W 106°59'0"W 106°58'0"W 106°57'0"W 106°56'0"W 106°55'0"W 106°54'0"W 106°53'0"W 106°52'0"W 106°51'0"W 106°50'0"W 106°49'0"W 106°48'0"W 106°47'0"W 106°46'0"W 106°45'0"W 106°44'0"W 106°43'0"W 106°42'0"W 106°41'0"W 106°40'0"W