
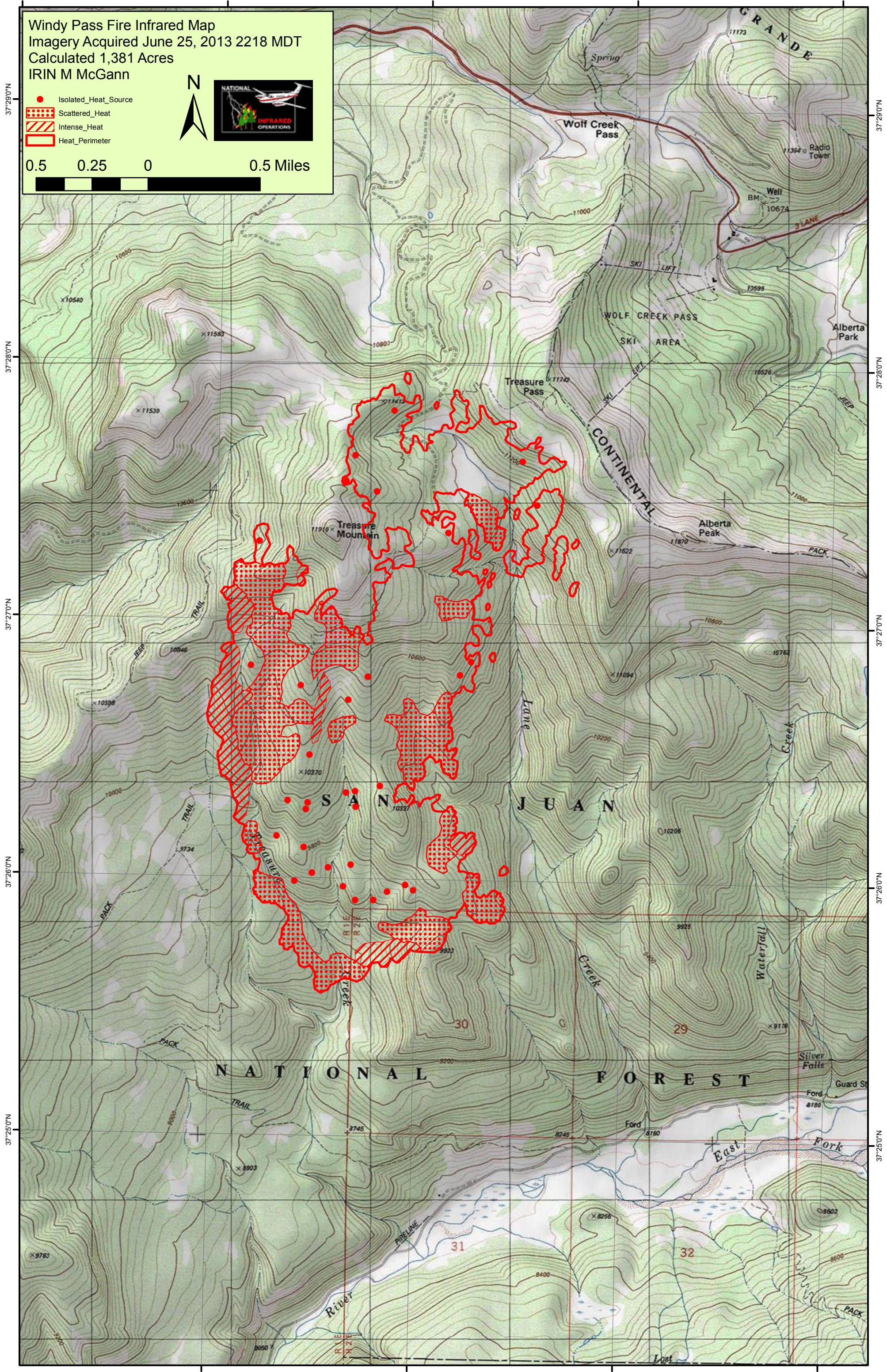


106°51'0"W 106°50'0"W 106°49'0"W 106°48'0"W 106°47'0"W

Windy Pass Fire Infrared Map
 Imagery Acquired June 25, 2013 2218 MDT
 Calculated 1,381 Acres
 IRIN M McGann

- Isolated_Heat_Source
- ▨ Scattered_Heat
- ▧ Intense_Heat
- ▭ Heat_Perimeter

0.5 0.25 0 0.5 Miles

106°50'0"W 106°49'0"W 106°48'0"W 106°47'0"W