

106°50'0"W


106°49'0"W

106°48'0"W

WINDY PASS INFRARED MAP

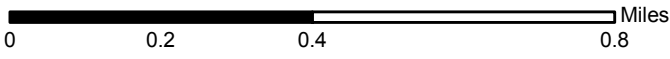
FLOWN JULY 3, 2013 @ 2322 MDT
CALCULATED ACRES: 1417

 Heat Perimeter

 Isolated Heat Spot



IRIN D. STROHM



37°28'0"N

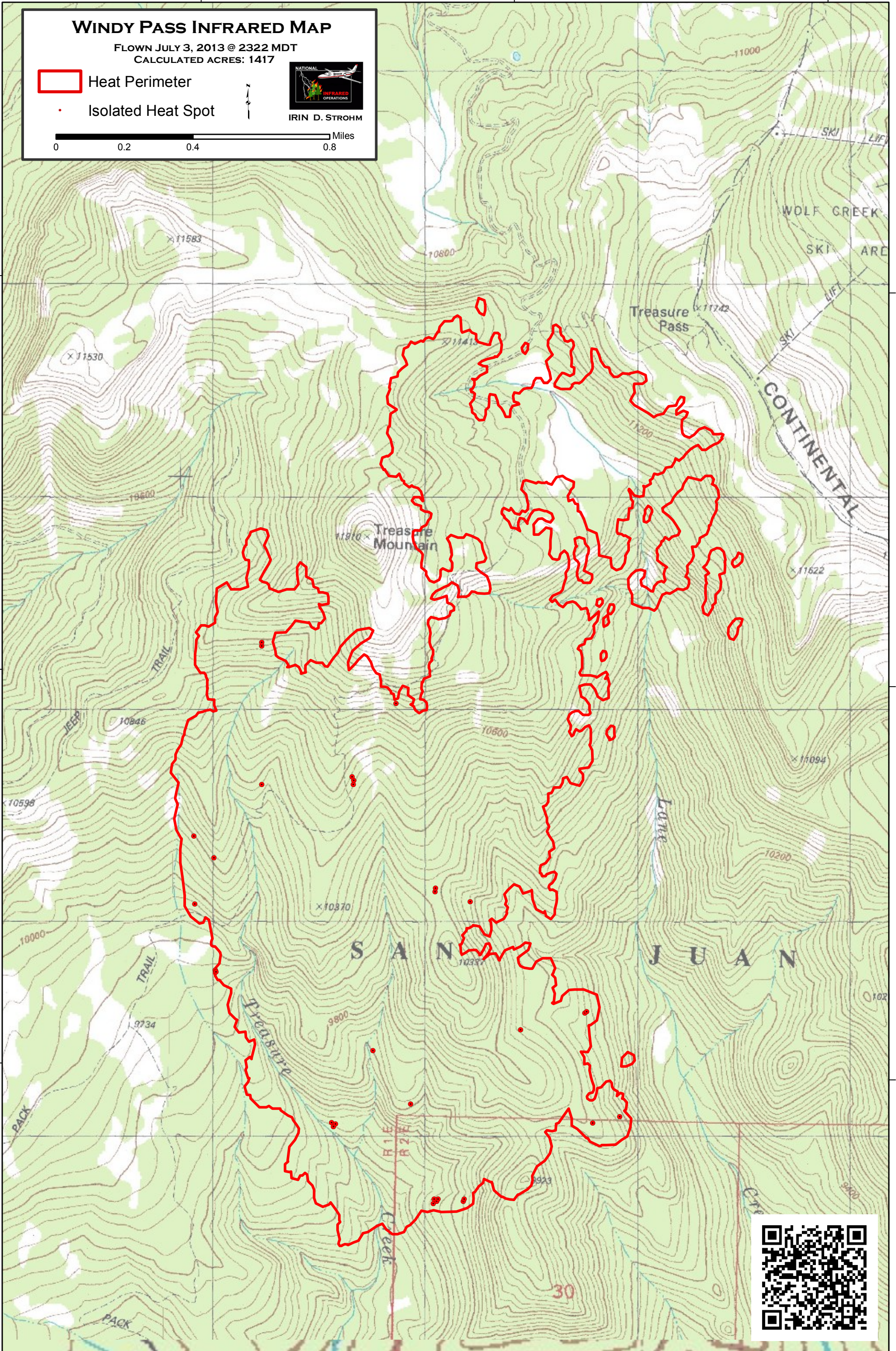
37°28'0"N

37°27'0"N

37°27'0"N

37°26'0"N

37°26'0"N



106°50'0"W

106°49'0"W

106°48'0"W

