
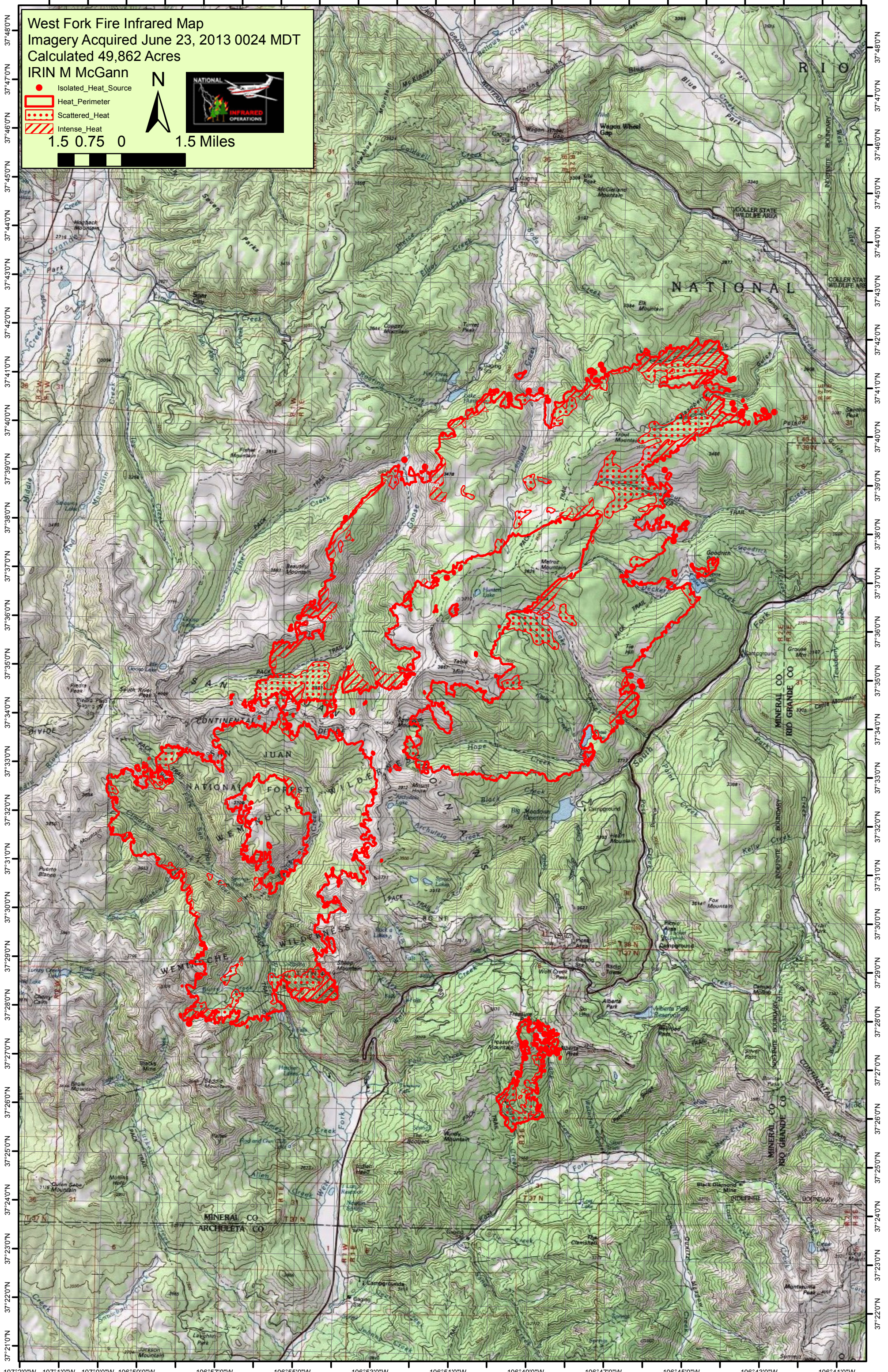


107°2'0"W 107°1'0"W 107°0'0"W 106°59'0"W 106°57'0"W 106°55'0"W 106°53'0"W 106°51'0"W 106°49'0"W 106°47'0"W 106°45'0"W 106°43'0"W 106°41'0"W

West Fork Fire Infrared Map
 Imagery Acquired June 23, 2013 0024 MDT
 Calculated 49,862 Acres
 IRIN M McGann

- Isolated_Heat_Source
- Heat_Perimeter
- Scattered_Heat
- Intense_Heat

1.5 0.75 0 1.5 Miles

107°2'0"W 107°1'0"W 107°0'0"W 106°59'0"W 106°57'0"W 106°55'0"W 106°53'0"W 106°51'0"W 106°49'0"W 106°47'0"W 106°45'0"W 106°43'0"W 106°41'0"W