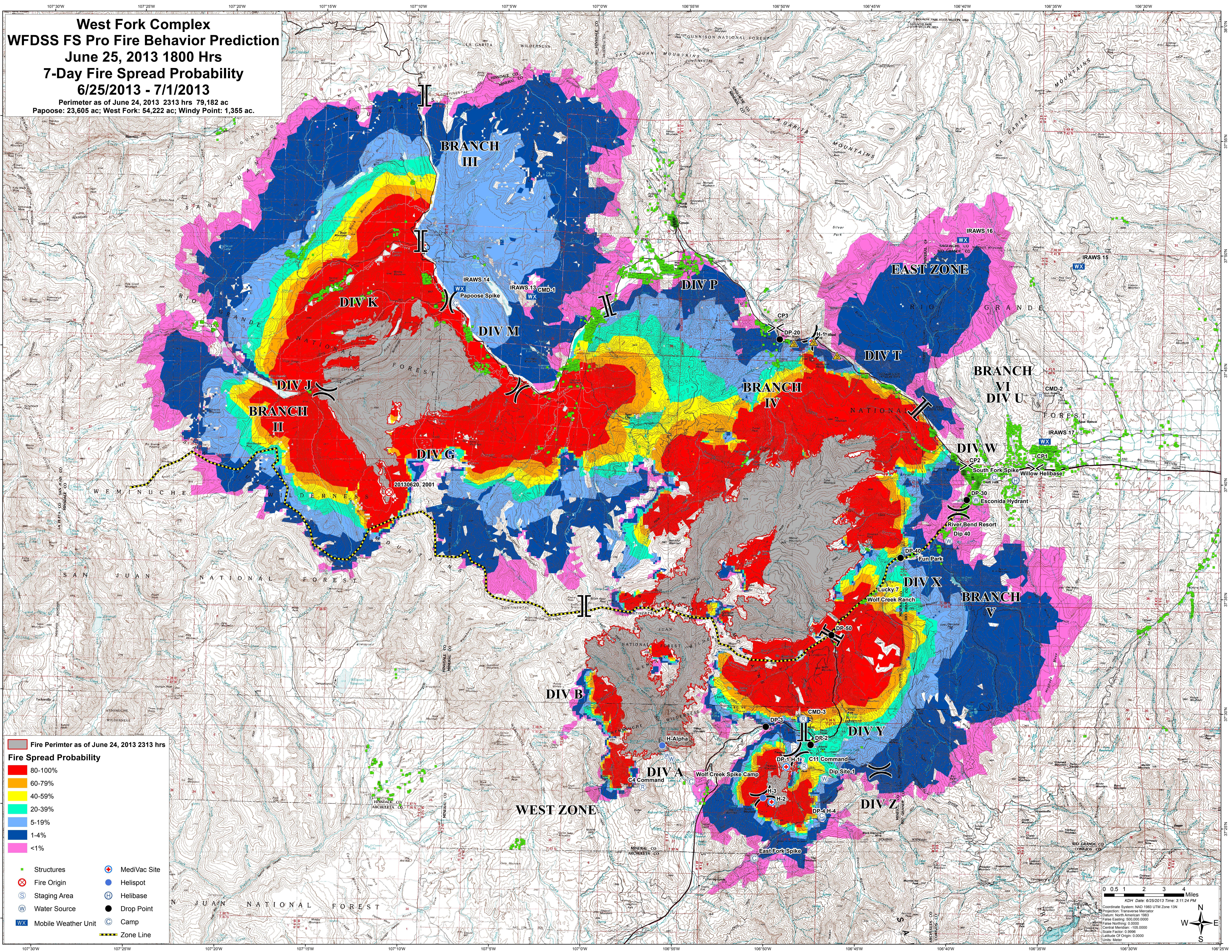


**West Fork Complex**  
**WFDSS FS Pro Fire Behavior Prediction**  
**June 25, 2013 1800 Hrs**  
**7-Day Fire Spread Probability**  
**6/25/2013 - 7/1/2013**

Perimeter as of June 24, 2013 2313 hrs 79,182 ac  
 Papoose: 23,605 ac; West Fork: 54,222 ac; Windy Point: 1,355 ac.



- Fire Perimeter as of June 24, 2013 2313 hrs**
- Fire Spread Probability**
- 80-100%
  - 60-79%
  - 40-59%
  - 20-39%
  - 5-19%
  - 1-4%
  - <1%
- Legend:**
- Structures
  - Fire Origin
  - Staging Area
  - Water Source
  - Mobile Weather Unit
  - MediVac Site
  - Helispot
  - Helibase
  - Drop Point
  - Camp
  - Zone Line

0 0.5 1 2 3 4 Miles

KDH Date: 6/25/2013 Time: 3:11:24 PM

Coordinate System: NAD 1983 UTM Zone 13N  
 Projection: Transverse Mercator  
 Datum: North American 1983  
 False Easting: 500,000.0000  
 False Northing: 0.0000  
 Central Meridian: -108.0000  
 Scale Factor: 0.9996  
 Latitude Of Origin: 0.0000  
 Units: Meter