

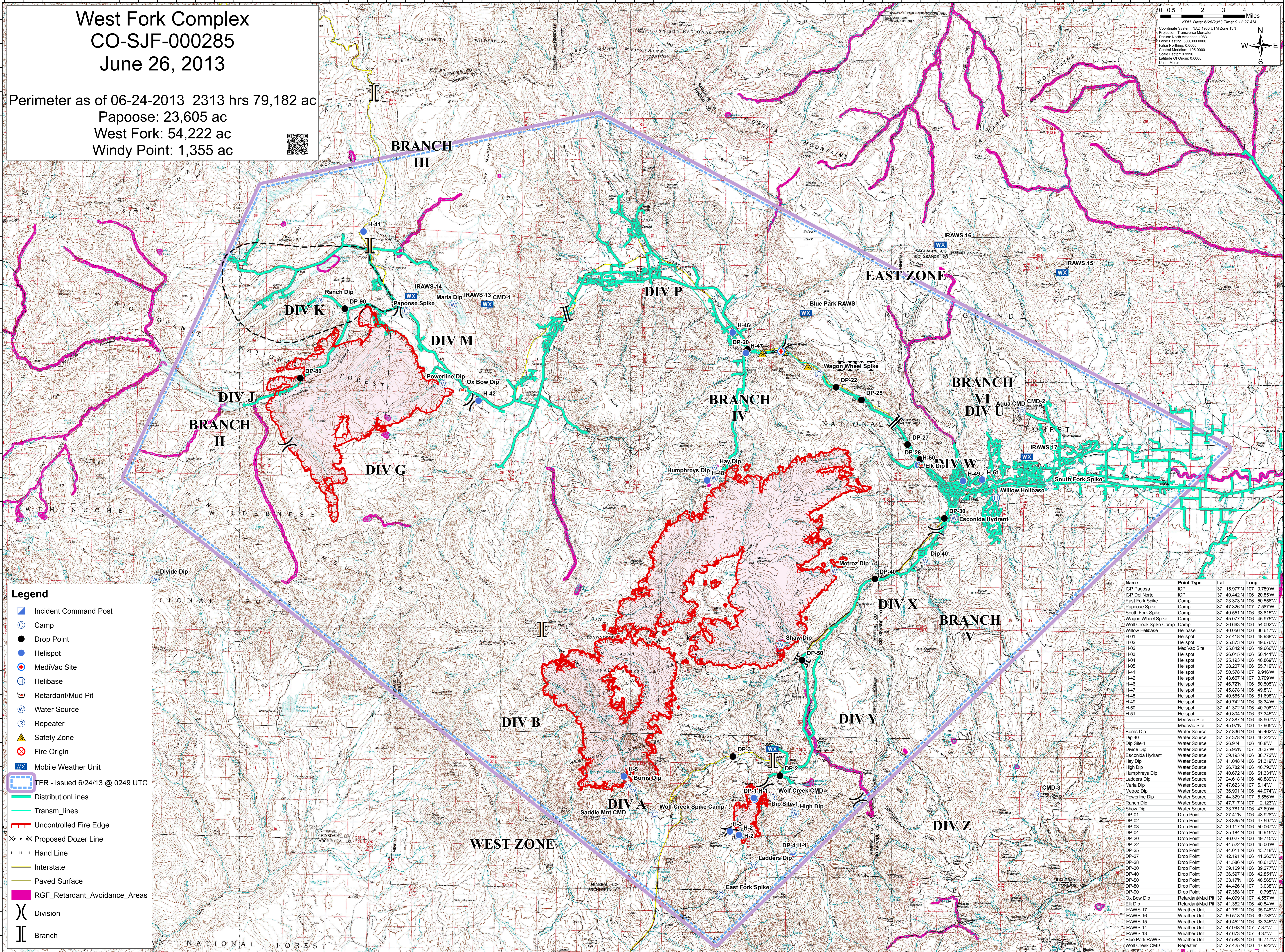
West Fork Complex CO-SJF-000285 June 26, 2013

Perimeter as of 06-24-2013 2313 hrs 79,182 ac
 Papoose: 23,605 ac
 West Fork: 54,222 ac
 Windy Point: 1,355 ac



0 0.5 1 2 3 4 Miles

Coordinate System: NAD 1983 UTM Zone 13N
 Projection: Transverse Mercator
 Datum: North American 1983
 False Easting: 500,000.0000
 False Northing: 0.0000
 Central Meridian: -105.0000
 Scale Factor: 0.9996
 Latitude Of Origin: 0.0000
 Units: Meter



Name	Point Type	Lat	Long
ICP Pagosa	ICP	37.15977N	107.0789W
ICP Del Norte	ICP	37.40442N	106.2085W
East Fork Spike	Camp	37.23373N	106.50556W
Papoose Spike	Camp	37.47326N	107.7587W
South Fork Spike	Camp	37.40551N	106.33815W
Wagon Wheel Spike	Camp	37.45077N	106.45975W
Wolf Creek Spike Camp	Camp	37.26053N	106.54952W
Willow Helibase	Helibase	37.40056N	106.3617W
H-01	Helispot	37.27418N	106.48938W
H-02	Helispot	37.25873N	106.49676W
H-02	MediVac Site	37.25842N	106.49666W
H-03	Helispot	37.26015N	106.50141W
H-04	Helispot	37.25193N	106.46869W
H-05	Helispot	37.28207N	106.55719W
H-41	Helispot	37.50578N	107.9916W
H-42	Helispot	37.43667N	107.3705W
H-46	Helispot	37.46721N	106.50505W
H-47	Helispot	37.45878N	106.4987W
H-48	Helispot	37.40565N	106.51698W
H-49	Helispot	37.40742N	106.3834W
H-50	Helispot	37.41372N	106.40706W
H-51	Helispot	37.40804N	106.37345W
	MediVac Site	37.27387N	106.48907W
	MediVac Site	37.4597N	106.47965W
Borns Dip	Water Source	37.27836N	106.55462W
Dip 40	Water Source	37.37378N	106.40223W
Dip Site 1	Water Source	37.26194N	106.46819W
Divide Dip	Water Source	37.3595N	107.2037W
Esconida Hydrant	Water Source	37.39193N	106.38772W
Hay Dip	Water Source	37.41048N	106.51319W
High Dip	Water Source	37.26782N	106.46793W
Humphreys Dip	Water Source	37.25194N	106.46869W
Ladders Dip	Water Source	37.24618N	106.48889W
Maria Dip	Water Source	37.47623N	107.514W
Metroz Dip	Water Source	37.36901N	106.44974W
Powerline Dip	Water Source	37.44239N	106.55661W
Ranch Dip	Water Source	37.47717N	107.12125W
Shaw Dip	Water Source	37.33781N	106.4769W
DP-01	Drop Point	37.2741N	106.48928W
DP-02	Drop Point	37.26365N	106.47597W
DP-03	Drop Point	37.26117N	106.50067W
DP-04	Drop Point	37.25184N	106.46819W
DP-20	Drop Point	37.46027N	106.49175W
DP-22	Drop Point	37.44522N	106.4506W
DP-25	Drop Point	37.44011N	106.43718W
DP-27	Drop Point	37.42191N	106.41263W
DP-28	Drop Point	37.41586N	106.40813W
DP-30	Drop Point	37.39169N	106.39277W
DP-40	Drop Point	37.36597N	106.42851W
DP-50	Drop Point	37.3317N	106.46566W
DP-90	Drop Point	37.44268N	107.13039W
DP-90	Drop Point	37.47358N	107.10795W
Ox Bow Dip	Retardant/Mud Pit	37.44099N	107.4557W
Elk Dip	Retardant/Mud Pit	37.41352N	106.4054W
IRAWS 17	Weather Unit	37.41762N	106.35048W
IRAWS 16	Weather Unit	37.50518N	106.39739W
IRAWS 15	Weather Unit	37.49452N	106.33345W
IRAWS 14	Weather Unit	37.47948N	107.737W
IRAWS 13	Weather Unit	37.47673N	107.337W
Blue Park RAWs	Weather Unit	37.47583N	106.46717W
Wolf Creek CMD	Repeater	37.27425N	106.47923W

- Legend**
- Incident Command Post
 - Camp
 - Drop Point
 - Helispot
 - MediVac Site
 - Helibase
 - Retardant/Mud Pit
 - Water Source
 - Repeater
 - Safety Zone
 - Fire Origin
 - Mobile Weather Unit
 - TFR - issued 6/24/13 @ 0249 UTC
 - Distribution Lines
 - Transm_lines
 - Uncontrolled Fire Edge
 - Proposed Dozer Line
 - Hand Line
 - Interstate
 - Paved Surface
 - RGF_Retardant_Avoidance_Areas
 - Division
 - Branch