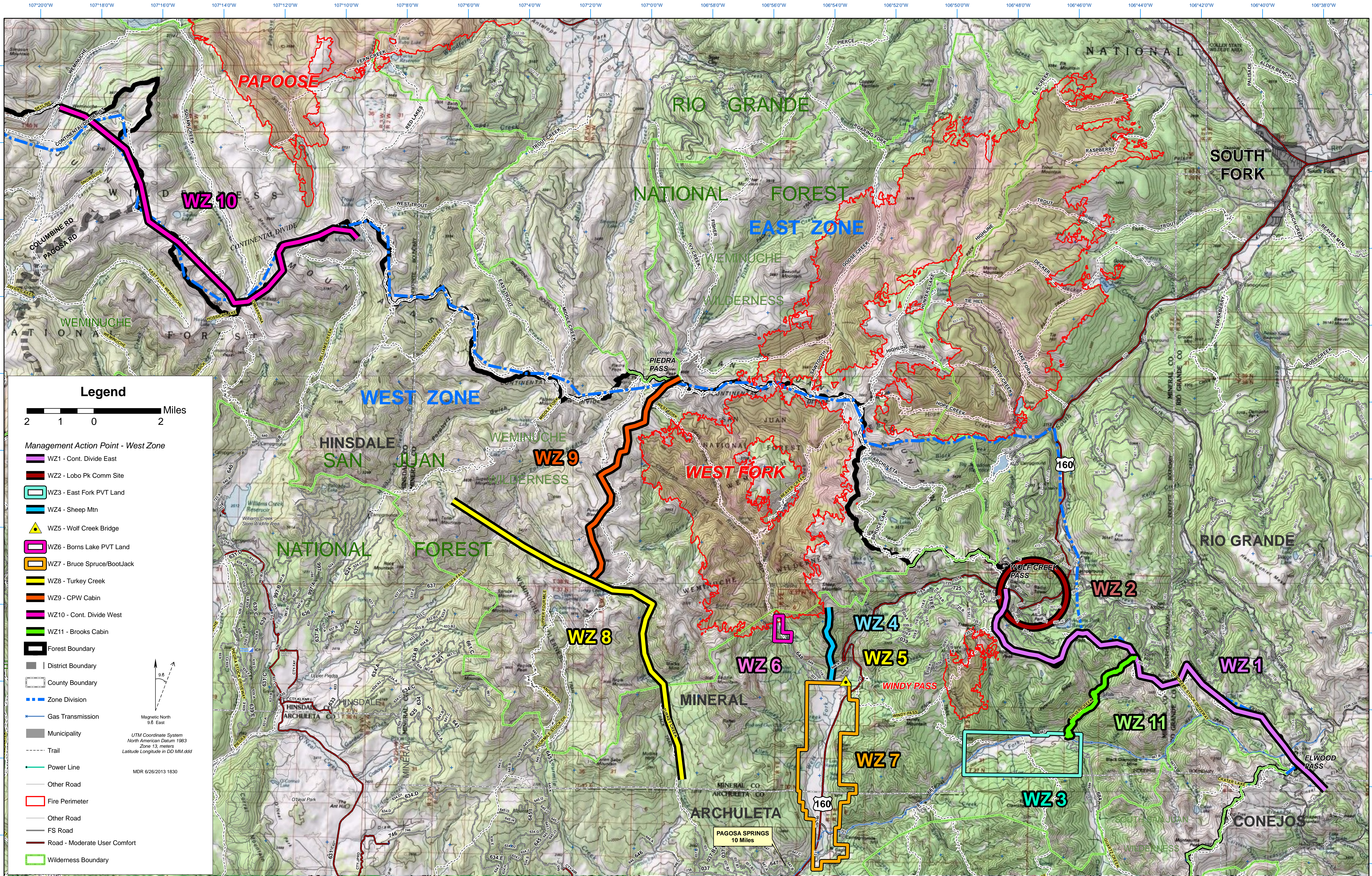


# MANAGEMENT ACTION POINTS - WEST ZONE

West Fork Complex - COSJF-000285 - IR Perimeter - 6/25/2013 2218 hrs - 81,331 acres

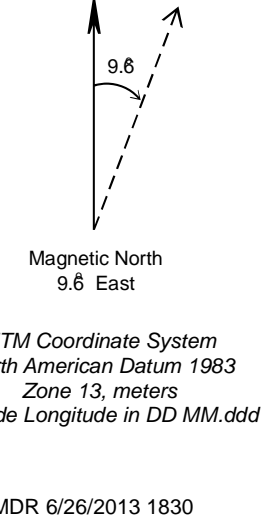


### Legend



#### Management Action Point - West Zone

- WZ1 - Cont. Divide East
- WZ2 - Lobo Pk Comm Site
- WZ3 - East Fork PVT Land
- WZ4 - Sheep Mtn
- WZ5 - Wolf Creek Bridge
- WZ6 - Borns Lake PVT Land
- WZ7 - Bruce Spruce/Boo/Jack
- WZ8 - Turkey Creek
- WZ9 - CPW Cabin
- WZ10 - Cont. Divide West
- WZ11 - Brooks Cabin
- Forest Boundary
- District Boundary
- County Boundary
- Zone Division
- Gas Transmission
- Municipality
- Trail
- Power Line
- Other Road
- Fire Perimeter
- Other Road
- FS Road
- Road - Moderate User Comfort
- Wilderness Boundary



PAGOSA SPRINGS  
10 Miles