

107°18'W

107°16'W

107°14'W

37°50'N

37°50'N

37°48'N

37°48'N

37°46'N

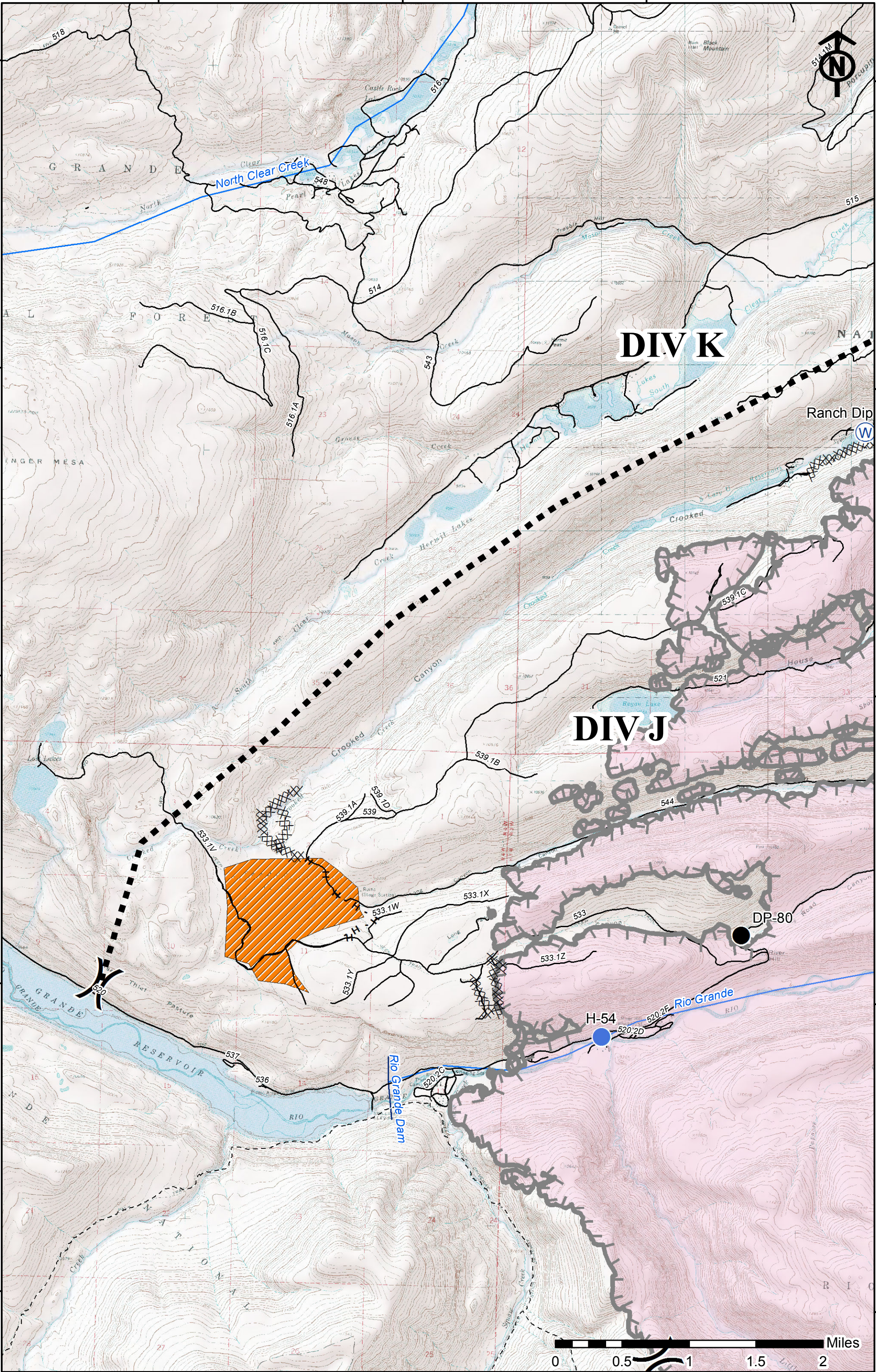
37°46'N

37°44'N

37°44'N

37°42'N

37°42'N

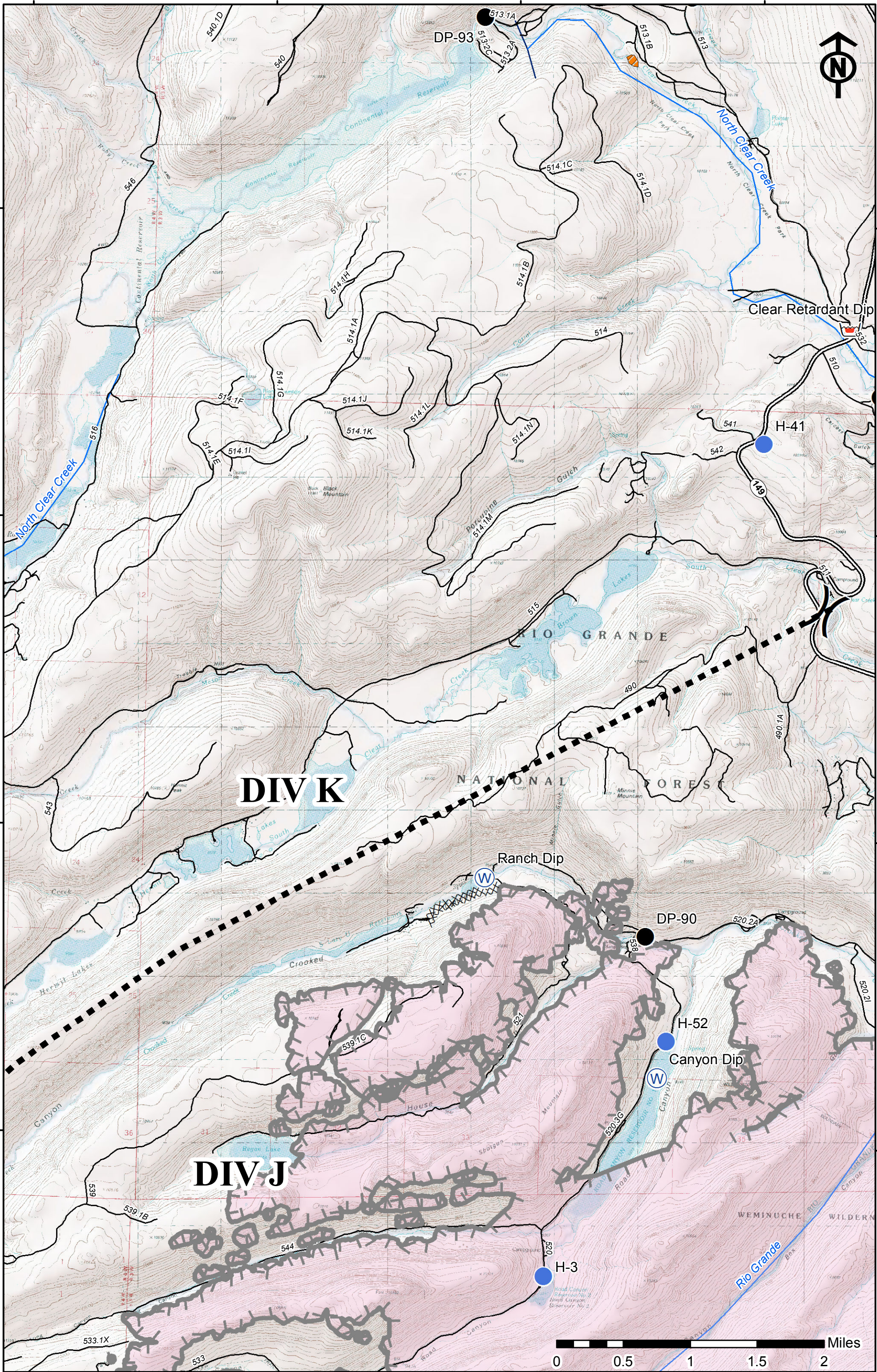


107°18'W

107°16'W

107°14'W

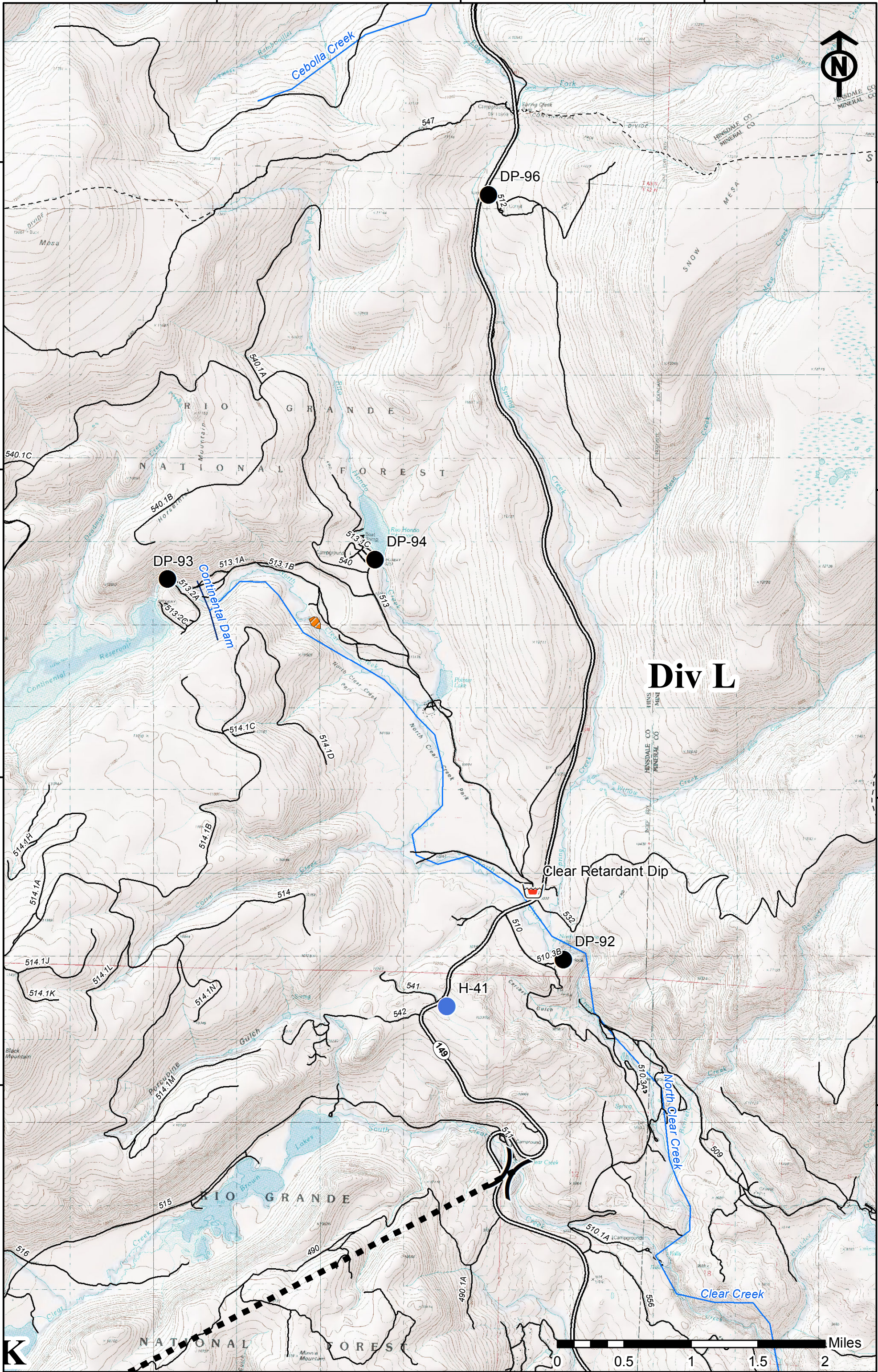
PAGE: 0112W



DIV K

DIV J





Div L

Clear Retardant Dip

DP-92

H-41

DP-94

DP-93

DP-96

510.3B

541

542

514.1C

514.1D

513.1A

513.1B

513.1C

540.1A

540.1B

540.1C

510.1A

510.3A

515

490

490.1A

511

556

509



107°8'W

107°6'W

107°4'W

107°2'W

37°48'N

37°46'N

37°44'N

37°42'N

37°40'N

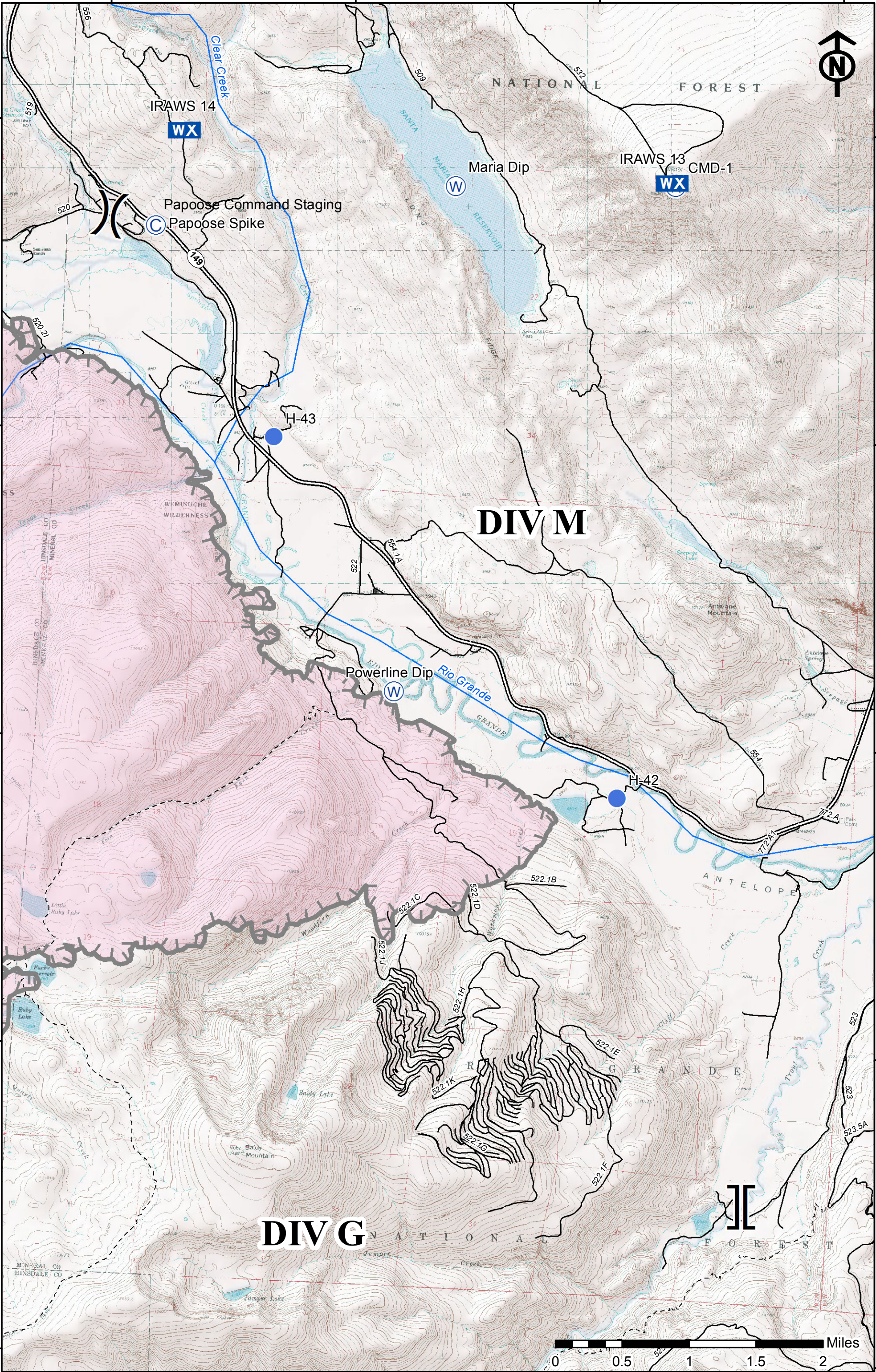
37°48'N

37°46'N

37°44'N

37°42'N

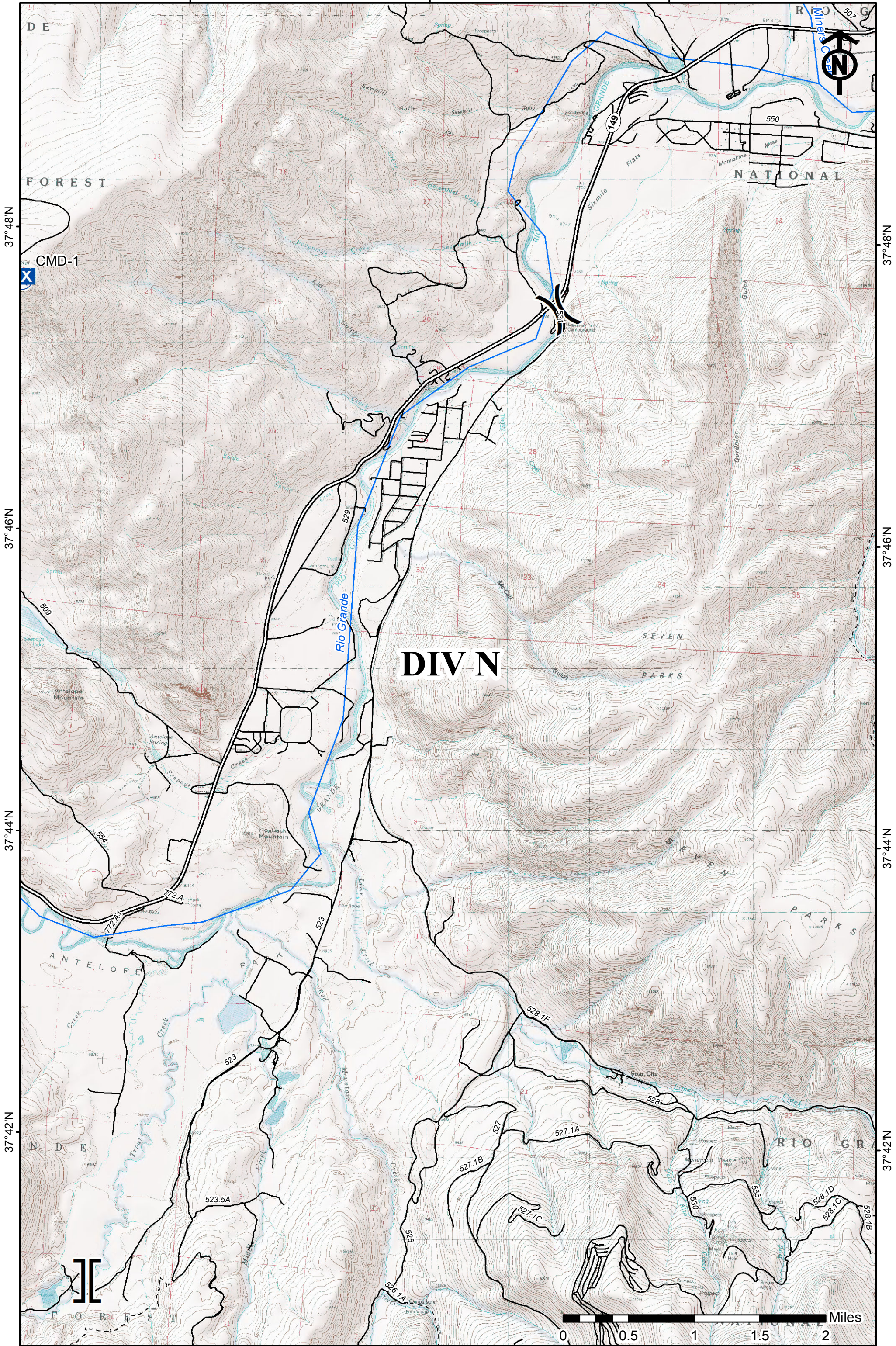
37°40'N



DIV M

DIV G





37°48'N

37°46'N

37°44'N

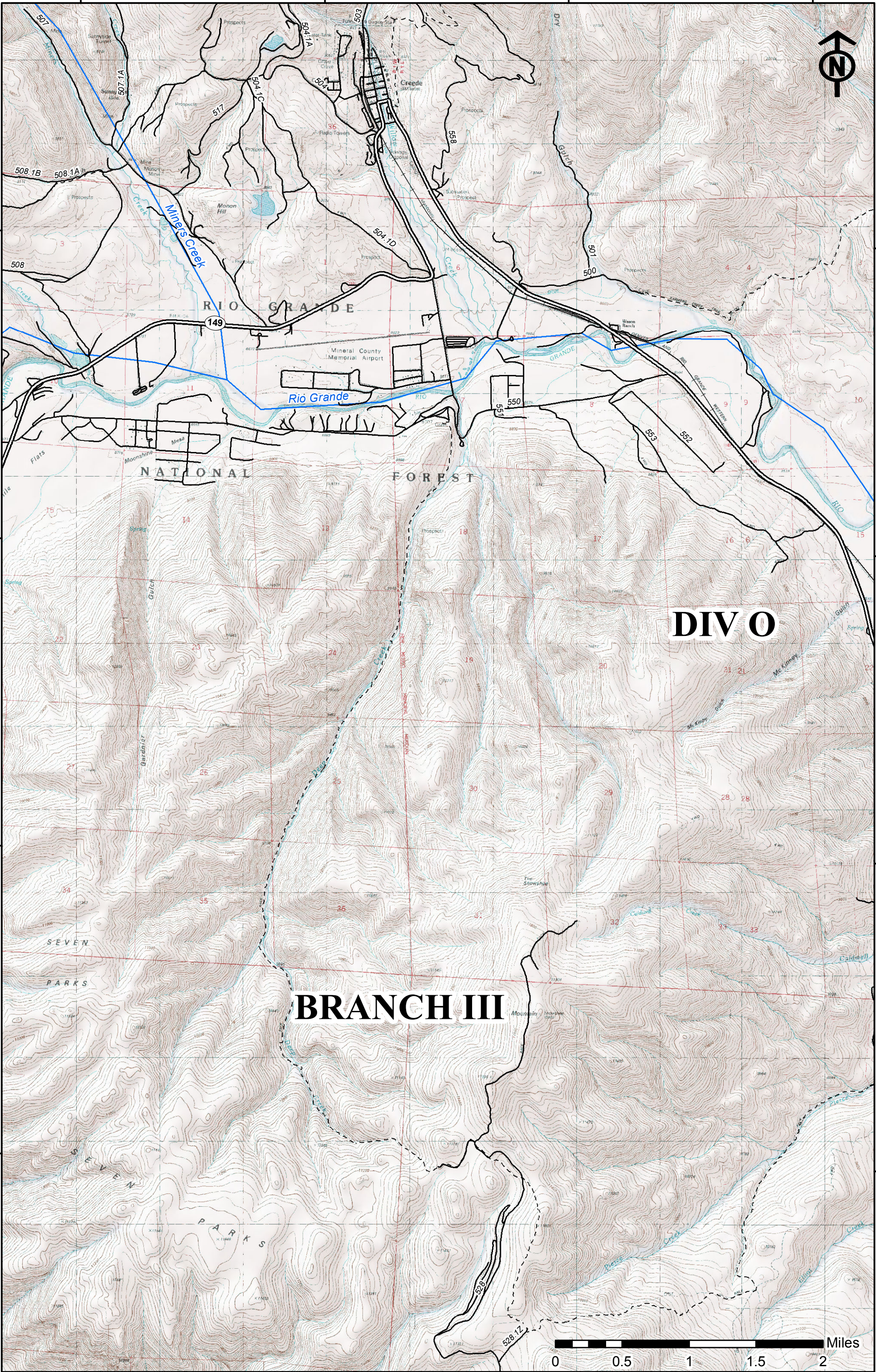
37°42'N

37°48'N

37°46'N

37°44'N

37°42'N



DIV O

BRANCH III



BRANCH III

BRANCH IV

Div P

37°44'N

37°44'N

37°42'N

37°42'N

37°40'N

37°40'N

37°38'N

37°38'N



H-47

H-44

Hay Dip

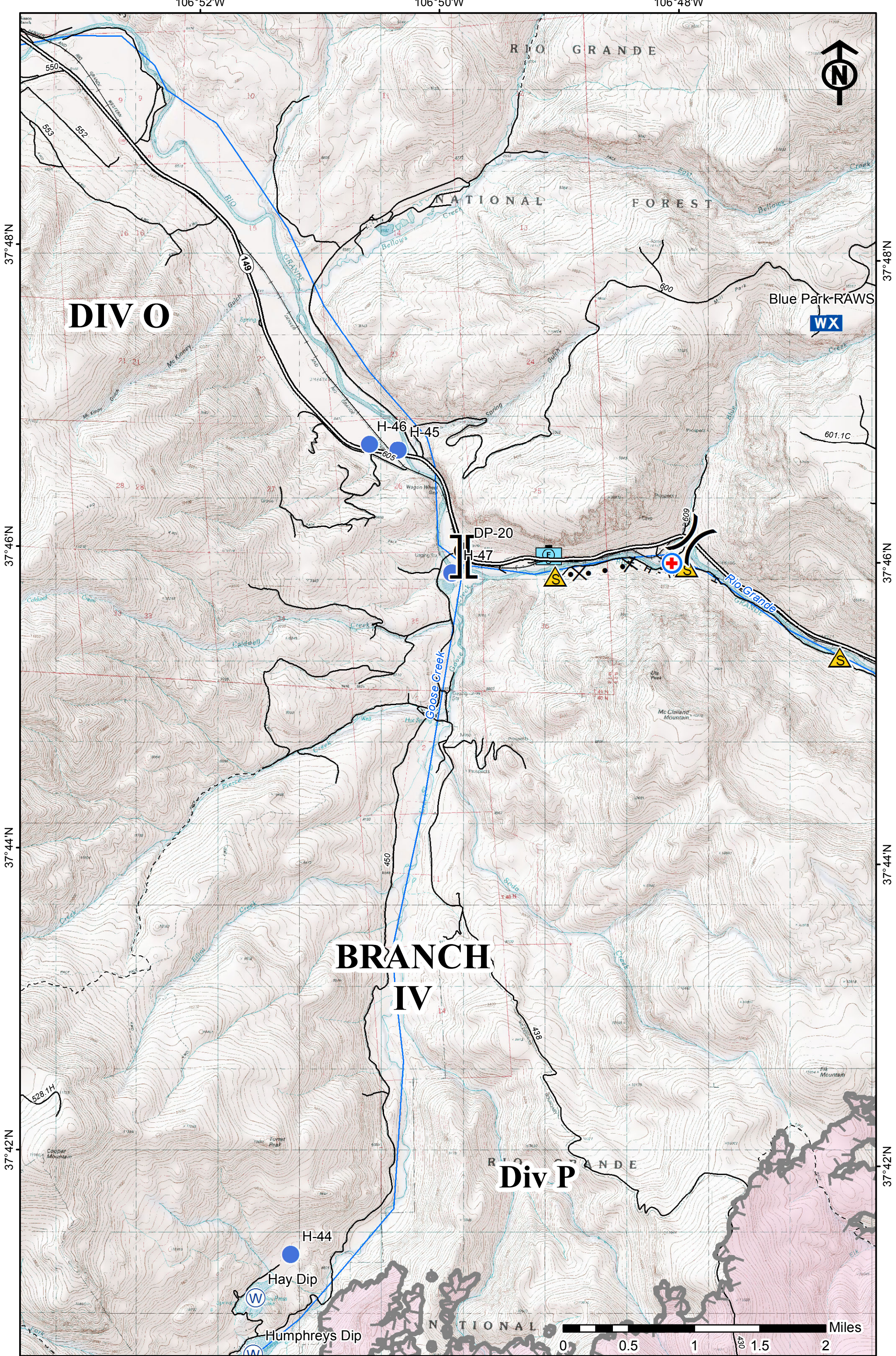
Humphreys Dip

H-48N

II



Miles



DIV O

Blue Park-RAWS
WX

H-46 H-45

DP-20
H-47

BRANCH IV

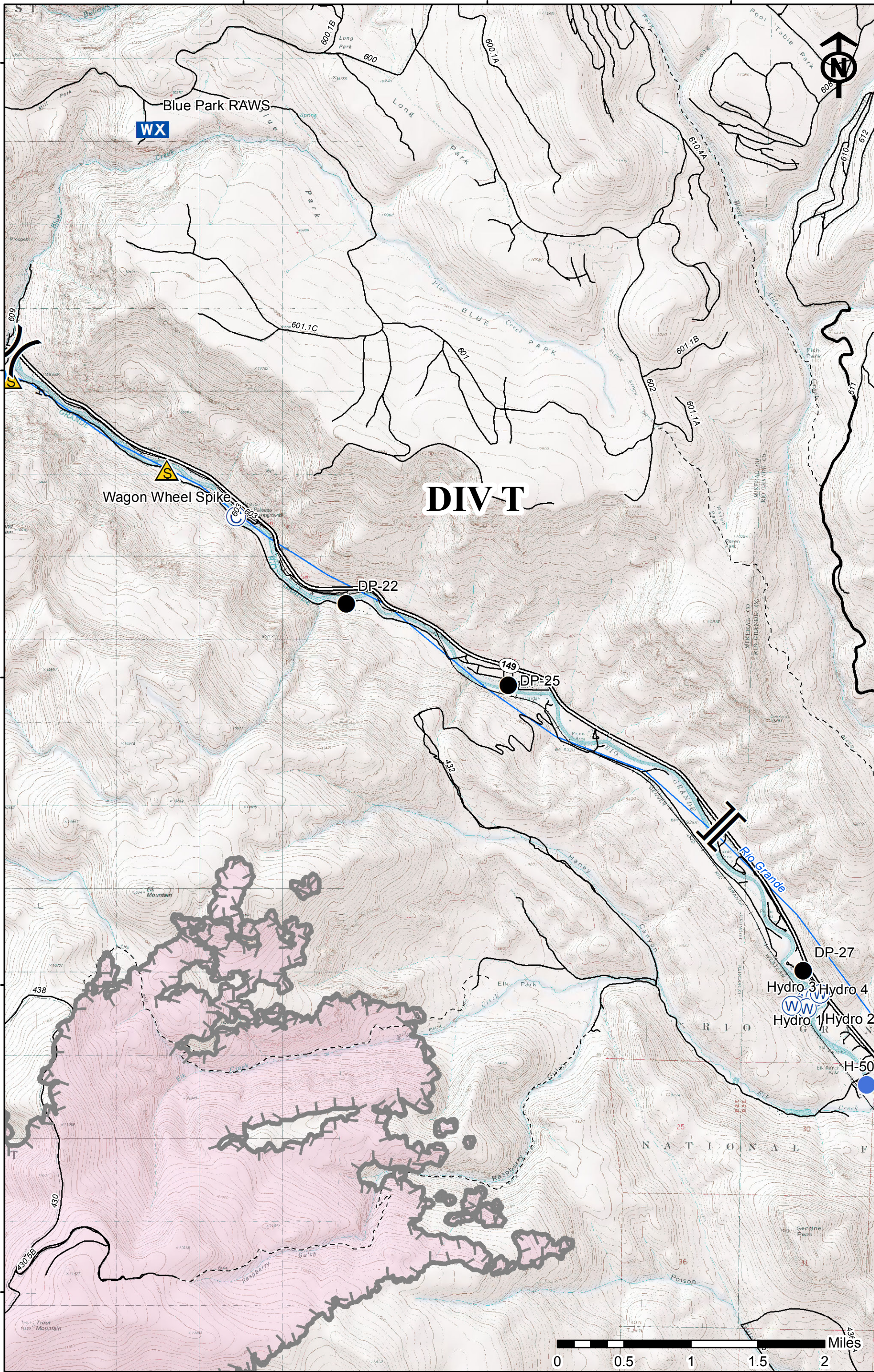
Div P

H-44

Hay Dip

Humphreys Dip



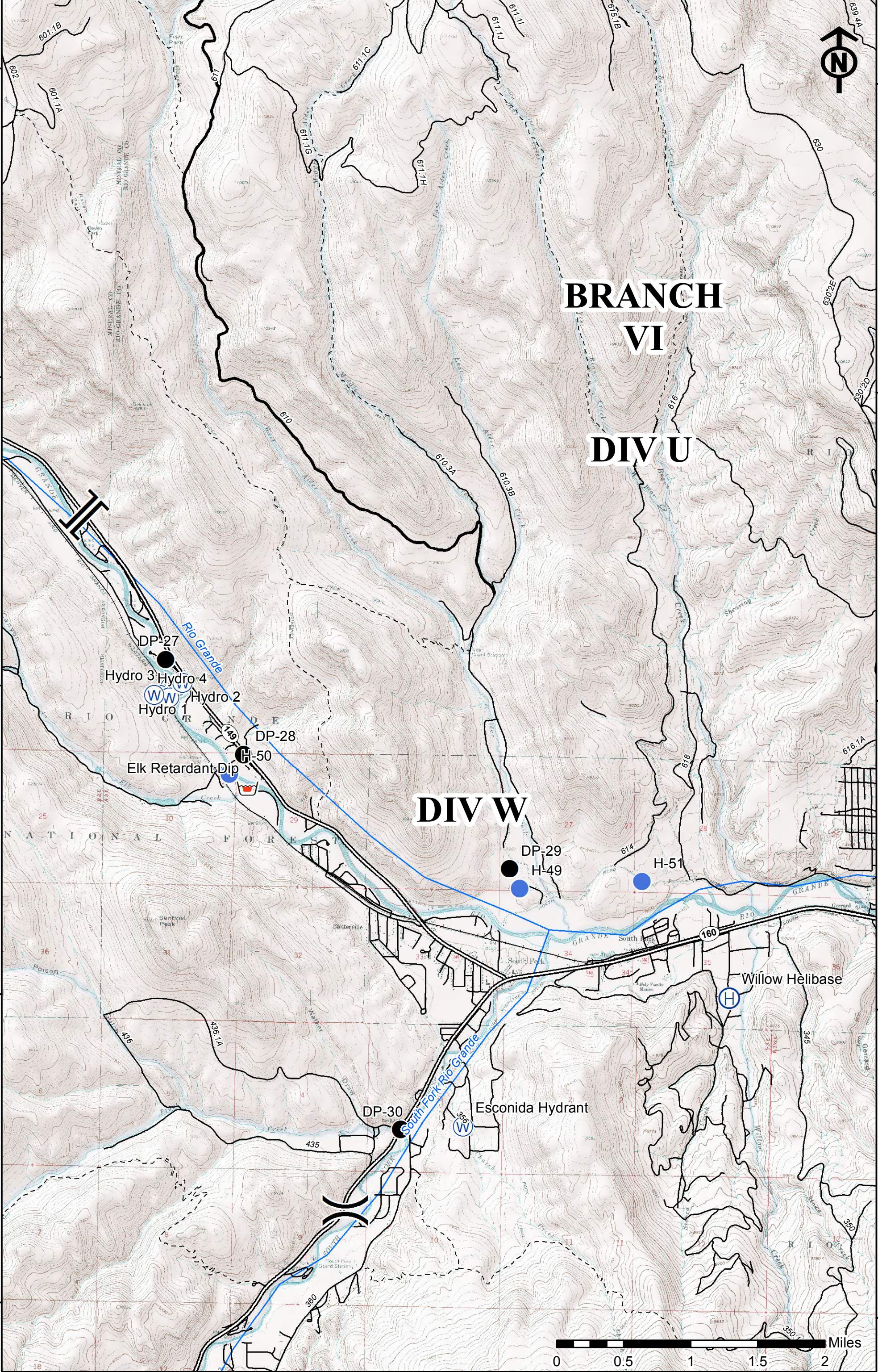


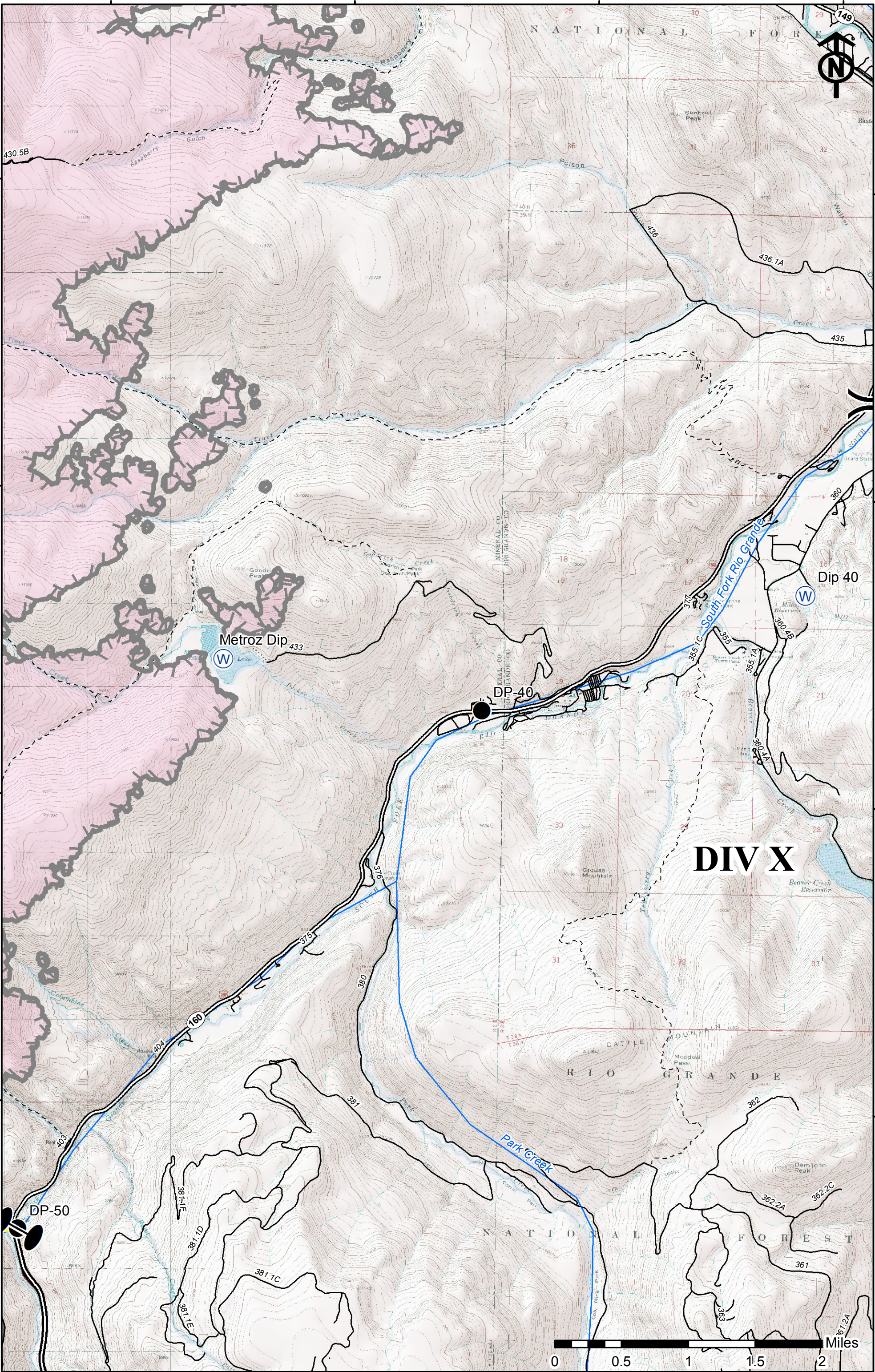


BRANCH VI

DIV U

DIV W





DIV X

