

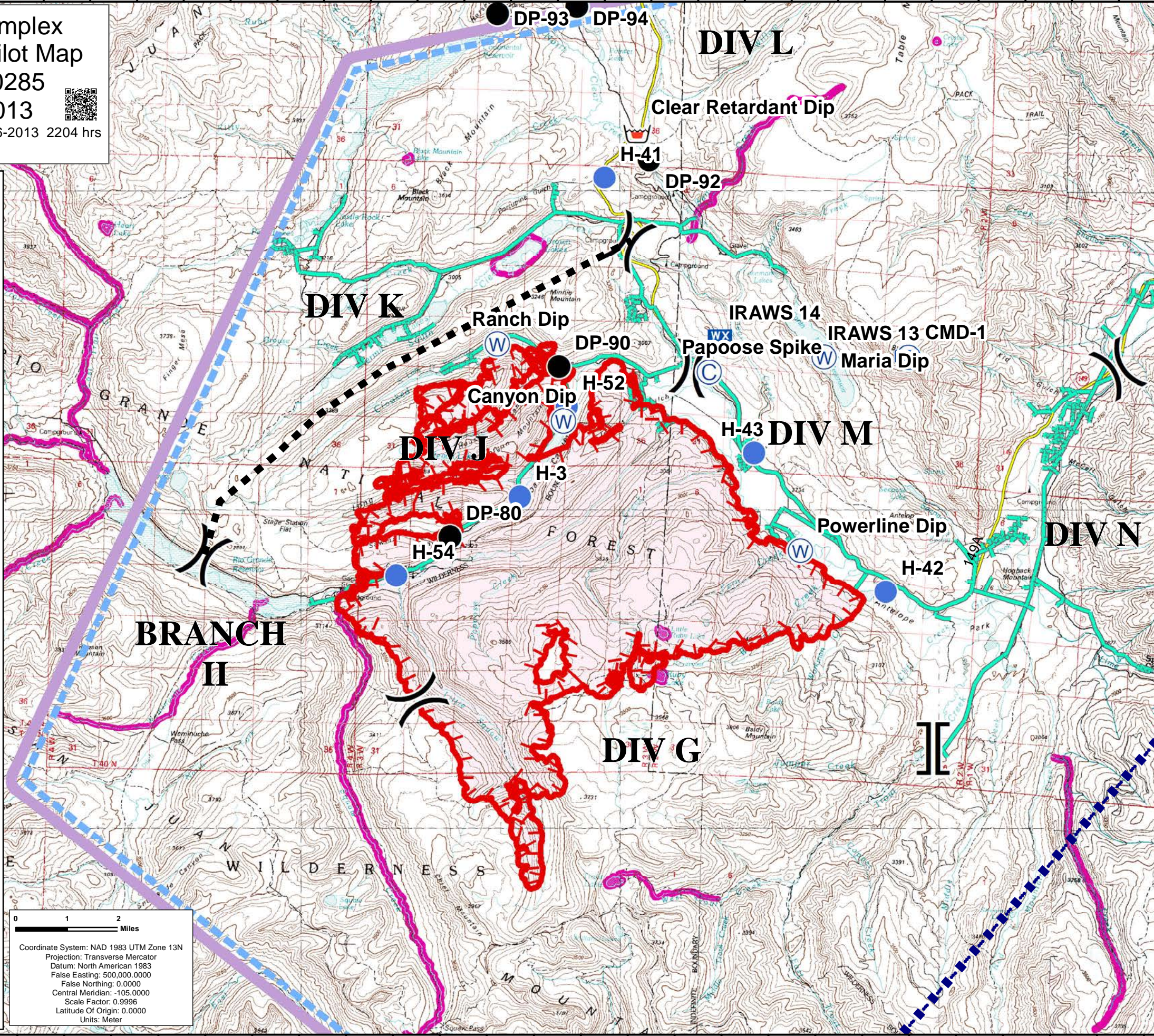
107°27'W 107°25'W 107°23'W 107°21'W 107°19'W 107°17'W 107°15'W 107°13'W 107°11'W 107°9'W 107°8'W 107°7'W 107°6'W 107°5'W 107°4'W 107°3'W 107°2'W 107°1'W 106°59'W 106°57'W 106°55'W 106°53'W

**West Fork Complex
Papoose Fire Pilot Map**
CO-SJF-000285
June 28, 2013
Papoose Perimeter as of 06-26-2013 2204 hrs
26,483 acres

- Incident Command Post
- Camp
- Drop Point
- Helispot
- MediVac Site
- Helibase
- Retardant/Mud Pit
- Water Source
- Repeater
- Safety Zone
- Fire Origin
- Mobile Weather Unit
- TFR - issued 6/24/13 @ 0249 UTC
- Distribution Lines
- Transmission Lines
- Retardant Avoid Areas
- Uncontrolled Fire Edge
- Interstate
- Paved Surface
- Zone
- Division
- Branch
- Zone Fence
- Div J/K line

0 1 2 Miles

Coordinate System: NAD 1983 UTM Zone 13N
 Projection: Transverse Mercator
 Datum: North American 1983
 False Easting: 500,000.0000
 False Northing: 0.0000
 Central Meridian: -105.0000
 Scale Factor: 0.9996
 Latitude Of Origin: 0.0000
 Units: Meter



rk Spike	Camp	106° 50' 55.6"W	37° 21' 37.3"N
rk Spike	Camp	107° 7' 58.7"W	37° 47' 32.6"N
rk Spike	Camp	106° 33' 81.5"W	37° 40' 55.1"N
heel Spike	Camp	106° 45' 97.5"W	37° 45' 07.7"N
rk Spike	Camp	106° 54' 09.2"W	37° 26' 66.3"N
Check	Check Point	106° 55' 53.0"W	37° 50' 00.0"N
ed IP	Check Point	106° 55' 53.0"W	37° 50' 00.0"N
orle IP	Check Point	106° 21' 27.0"W	37° 42' 82.0"N
Check	Check Point	106° 52' 93.4"W	37° 29' 81.4"N
ile IP	Check Point	107° 20' 44.0"W	37° 36' 20.0"N
Check	Check Point	106° 53' 27.0"W	37° 33' 85.0"N
n Check	Check Point	107° 15' 39.2"W	37° 43' 31.5"N
Check	Check Point	107° 08' 51.0"W	37° 42' 17.5"N
Check	Check Point	106° 48' 00.0"W	37° 29' 00.0"N
Check	Check Point	107° 10' 16.0"W	37° 38' 01.1"N
Check	Check Point	106° 49' 80.0"W	37° 46' 50.0"N
s Check	Check Point	107° 13' 10.7"W	37° 30' 77.8"N
reek IP	Check Point	106° 47' 17.0"W	37° 28' 85.0"N
-1	Drop Point	106° 48' 90.7"W	37° 27' 38.7"N
-2	Drop Point	106° 47' 59.7"W	37° 28' 36.5"N
-3	Drop Point	106° 50' 06.7"W	37° 29' 11.7"N
-4	Drop Point	106° 46' 68.2"W	37° 25' 18.7"N
-20	Drop Point	106° 49' 71.5"W	37° 46' 02.7"N
-22	Drop Point	106° 45' 06.6"W	37° 44' 52.2"N
-25	Drop Point	106° 43' 71.8"W	37° 44' 01.1"N
-27	Drop Point	106° 41' 26.3"W	37° 42' 19.1"N
-28	Drop Point	106° 40' 61.3"W	37° 41' 58.6"N
-29	Drop Point	106° 38' 42.8"W	37° 40' 87.2"N
-30	Drop Point	106° 39' 27.7"W	37° 39' 16.9"N
-40	Drop Point	106° 42' 85.1"W	37° 36' 59.7"N
-50	Drop Point	106° 46' 56.5"W	37° 33' 17.1"N
-80	Drop Point	107° 13' 03.8"W	37° 44' 42.6"N
-90	Drop Point	107° 10' 79.5"W	37° 47' 35.8"N
-92	Drop Point	107° 8' 97.1"W	37° 50' 90.2"N
-93	Drop Point	107° 12' 28.5"W	37° 53' 31.5"N
-94	Drop Point	107° 10' 59.1"W	37° 53' 47.2"N
-96	Drop Point	107° 9' 73.1"W	37° 55' 86.3"N
Helibase	Helibase	106° 36' 61.7"W	37° 40' 05.6"N
L-1	Helispot	106° 48' 90.7"W	37° 27' 38.7"N
L-2	Helispot	106° 49' 37.9"W	37° 25' 86.1"N
L-3	Helispot	107° 11' 56.5"W	37° 45' 13.5"N
L-3	Helispot	106° 50' 14.1"W	37° 26' 01.5"N
L-4	Helispot	106° 46' 86.9"W	37° 25' 19.3"N
L-5	Helispot	106° 55' 71.9"W	37° 20' 20.7"N
41	Helispot	107° 9' 91.6"W	37° 50' 57.8"N
42	Helispot	107° 3' 70.9"W	37° 43' 66.7"N
43	Helispot	107° 6' 58.4"W	37° 45' 96.9"N
44	Helispot	106° 51' 03.1"W	37° 41' 34.2"N
45	Helispot	106° 50' 26.7"W	37° 46' 68.4"N
46	Helispot	106° 50' 50.5"W	37° 46' 72.1"N
47	Helispot	106° 49' 8.8"W	37° 45' 87.8"N
48	Helispot	106° 51' 69.8"W	37° 40' 56.5"N
49	Helispot	106° 38' 34.4"W	37° 40' 74.2"N
50	Helispot	106° 40' 72.4"W	37° 41' 45.6"N
51	Helispot	106° 37' 34.5"W	37° 40' 80.4"N
52	Helispot	107° 10' 60.5"W	37° 46' 68.1"N
54	Helispot	107° 14' 16.1"W	37° 43' 74.8"N
55	Helispot	106° 44' 29.4"W	37° 43' 8.1"N
el Norte	Incident Command Post	106° 20' 85.5"W	37° 40' 44.2"N
agosa	Incident Command Post	107° 0' 78.9"W	37° 15' 97.7"N
	MediVac Site	106° 47' 96.5"W	37° 45' 97.1"N
	MediVac Site	106° 49' 37.9"W	37° 25' 86.1"N
DP1	MediVac Site	106° 48' 90.7"W	37° 27' 38.7"N
	Mobile Weather Unit	106° 48' 02.3"W	37° 29' 45.7"N
rk RAWS	Mobile Weather Unit	106° 46' 71.7"W	37° 47' 58.3"N
VS 13	Mobile Weather Unit	107° 3' 37.7"W	37° 47' 67.3"N
VS 14	Mobile Weather Unit	107° 7' 37.7"W	37° 47' 94.8"N
VS 15	Mobile Weather Unit	106° 33' 34.5"W	37° 49' 45.2"N
VS 16	Mobile Weather Unit	106° 39' 73.8"W	37° 50' 51.8"N
VS 17	Mobile Weather Unit	106° 35' 04.8"W	37° 41' 78.2"N
CMD	Repeater	106° 35' 32.2"W	37° 43' 67.1"N

107°25'W 107°23'W 107°21'W 107°19'W 107°17'W 107°15'W 107°13'W 107°11'W 107°9'W 107°8'W 107°7'W 107°6'W 107°5'W 107°4'W 107°3'W 107°2'W 107°1'W 106°59'W 106°57'W 106°55'W 106°53'W