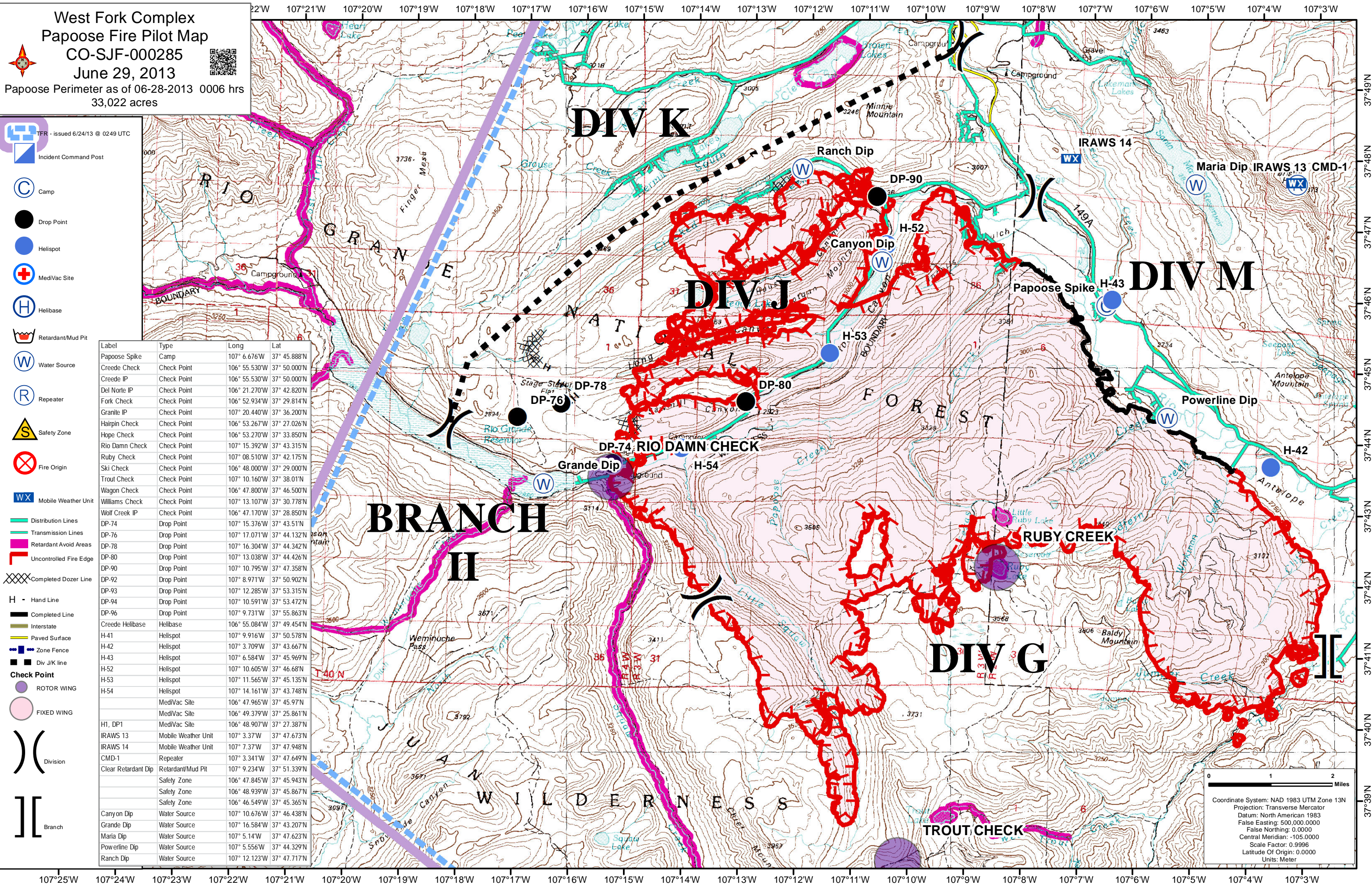


West Fork Complex  
 Papoose Fire Pilot Map  
 CO-SJF-000285  
 June 29, 2013  
 Papoose Perimeter as of 06-28-2013 0006 hrs  
 33,022 acres

- ICP - issued 6/24/13 @ 0249 UTC
- Incident Command Post
- Camp
- Drop Point
- Helispot
- MediVac Site
- Helibase
- Retardant/Mud Pit
- Water Source
- Repeater
- Safety Zone
- Fire Origin
- Mobile Weather Unit
- Distribution Lines
- Transmission Lines
- Retardant Avoid Areas
- Uncontrolled Fire Edge
- Completed Dozer Line
- Hand Line
- Completed Line
- Interstate
- Paved Surface
- Zone Fence
- Div J/K line

Label	Type	Long	Lat
Papoose Spike	Camp	107° 6.676'W	37° 45.888'N
Creede Check	Check Point	106° 55.530'W	37° 50.000'N
Creede IP	Check Point	106° 55.530'W	37° 50.000'N
Del Norte IP	Check Point	106° 21.270'W	37° 42.820'N
Fork Check	Check Point	106° 52.934'W	37° 29.814'N
Granite IP	Check Point	107° 20.440'W	37° 36.200'N
Hairpin Check	Check Point	106° 53.267'W	37° 27.026'N
Hope Check	Check Point	106° 53.270'W	37° 33.850'N
Rio Damn Check	Check Point	107° 15.392'W	37° 43.315'N
Ruby Check	Check Point	107° 08.510'W	37° 42.175'N
Ski Check	Check Point	106° 48.000'W	37° 29.000'N
Trout Check	Check Point	107° 10.160'W	37° 38.01'N
Wagon Check	Check Point	106° 47.800'W	37° 46.500'N
Williams Check	Check Point	107° 13.107'W	37° 30.778'N
Wolf Creek IP	Check Point	106° 47.170'W	37° 28.850'N
DP-74	Drop Point	107° 15.376'W	37° 43.51'N
DP-76	Drop Point	107° 17.071'W	37° 44.132'N
DP-78	Drop Point	107° 16.304'W	37° 44.342'N
DP-80	Drop Point	107° 13.038'W	37° 44.426'N
DP-90	Drop Point	107° 10.795'W	37° 47.358'N
DP-92	Drop Point	107° 8.971'W	37° 50.902'N
DP-93	Drop Point	107° 12.285'W	37° 53.315'N
DP-94	Drop Point	107° 10.591'W	37° 53.472'N
DP-96	Drop Point	107° 9.731'W	37° 55.863'N
Creede Helibase	Helibase	106° 55.084'W	37° 49.454'N
H-41	Helispot	107° 9.916'W	37° 50.578'N
H-42	Helispot	107° 3.709'W	37° 43.667'N
H-43	Helispot	107° 6.584'W	37° 45.969'N
H-52	Helispot	107° 10.605'W	37° 46.68'N
H-53	Helispot	107° 11.565'W	37° 45.135'N
H-54	Helispot	107° 14.161'W	37° 43.748'N
	MediVac Site	106° 47.965'W	37° 45.97'N
	MediVac Site	106° 49.379'W	37° 25.861'N
H1, DP1	MediVac Site	106° 48.907'W	37° 27.387'N
IRAWS 13	Mobile Weather Unit	107° 3.37'W	37° 47.673'N
IRAWS 14	Mobile Weather Unit	107° 7.37'W	37° 47.948'N
CMD-1	Repeater	107° 3.341'W	37° 47.649'N
Clear Retardant Dip	Retardant/Mud Pit	107° 9.234'W	37° 51.339'N
	Safety Zone	106° 47.845'W	37° 45.943'N
	Safety Zone	106° 48.939'W	37° 45.867'N
	Safety Zone	106° 46.549'W	37° 45.365'N
Canyon Dip	Water Source	107° 10.676'W	37° 46.438'N
Grande Dip	Water Source	107° 16.584'W	37° 43.207'N
Maria Dip	Water Source	107° 5.14'W	37° 47.623'N
Powerline Dip	Water Source	107° 5.556'W	37° 44.329'N
Ranch Dip	Water Source	107° 12.123'W	37° 47.717'N



0 1 2 Miles

Coordinate System: NAD 1983 UTM Zone 13N  
 Projection: Transverse Mercator  
 Datum: North American 1983  
 False Easting: 500,000.0000  
 False Northing: 0.0000  
 Central Meridian: -105.0000  
 Scale Factor: 0.9996  
 Latitude Of Origin: 0.0000  
 Units: Meter