

West Fork Complex: West Fork Fire  
 Pilot Map  
 CO-SJF-000285  
 June 29, 2013  
 West Fork Perimeter as of 06-28-2013 0006 hrs  
 56,373 ac



# BRANCH IV

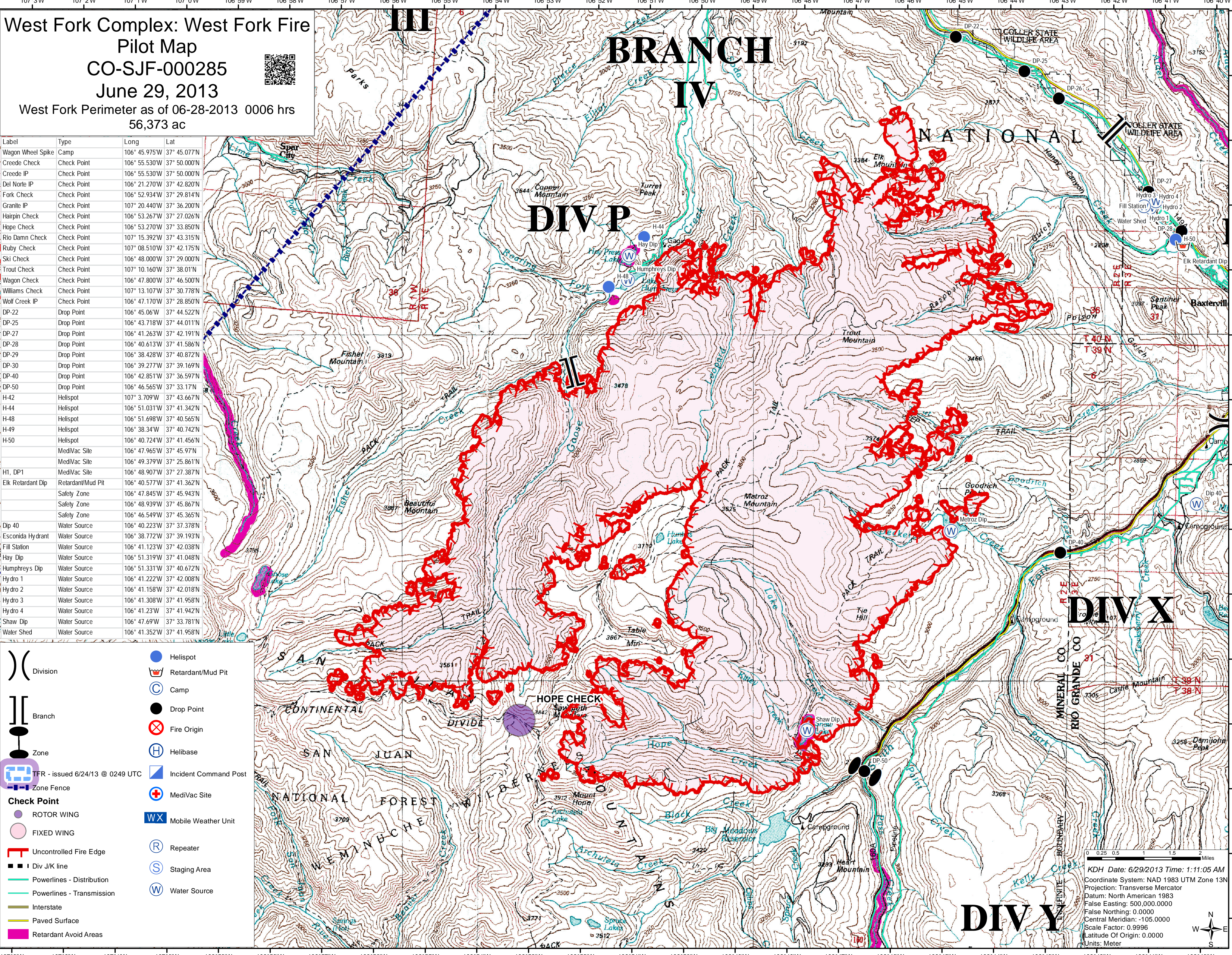
# DIV P

# DIV X

# DIV Y

Label	Type	Long	Lat
Wagon Wheel Spike	Camp	106° 45.975'W	37° 45.077'N
Creede Check	Check Point	106° 55.530'W	37° 50.000'N
Creede IP	Check Point	106° 55.530'W	37° 50.000'N
Del Norte IP	Check Point	106° 21.270'W	37° 42.820'N
Fork Check	Check Point	106° 52.934'W	37° 29.814'N
Granite IP	Check Point	107° 20.440'W	37° 36.200'N
Hairpin Check	Check Point	106° 53.267'W	37° 27.026'N
Hope Check	Check Point	106° 53.270'W	37° 33.850'N
Rio Damn Check	Check Point	107° 15.392'W	37° 43.315'N
Ruby Check	Check Point	107° 08.510'W	37° 42.175'N
Ski Check	Check Point	106° 48.000'W	37° 29.000'N
Trout Check	Check Point	107° 10.160'W	37° 38.01'N
Wagon Check	Check Point	106° 47.800'W	37° 46.500'N
Williams Check	Check Point	107° 13.107'W	37° 30.778'N
Wolf Creek IP	Check Point	106° 47.170'W	37° 28.850'N
DP-22	Drop Point	106° 45.06'W	37° 44.522'N
DP-25	Drop Point	106° 43.718'W	37° 44.011'N
DP-27	Drop Point	106° 41.263'W	37° 42.191'N
DP-28	Drop Point	106° 40.613'W	37° 41.586'N
DP-29	Drop Point	106° 38.428'W	37° 40.872'N
DP-30	Drop Point	106° 39.277'W	37° 39.169'N
DP-40	Drop Point	106° 42.851'W	37° 36.597'N
DP-50	Drop Point	106° 46.565'W	37° 33.17'N
H-42	Helispot	107° 3.709'W	37° 43.667'N
H-44	Helispot	106° 51.031'W	37° 41.342'N
H-48	Helispot	106° 51.698'W	37° 40.565'N
H-49	Helispot	106° 38.34'W	37° 40.742'N
H-50	Helispot	106° 40.724'W	37° 41.456'N
	MediVac Site	106° 47.965'W	37° 45.97'N
	MediVac Site	106° 49.379'W	37° 25.861'N
H1, DP1	MediVac Site	106° 48.907'W	37° 27.387'N
Elk Retardant Dip	Retardant/Mud Pit	106° 40.577'W	37° 41.362'N
	Safety Zone	106° 47.845'W	37° 45.943'N
	Safety Zone	106° 48.939'W	37° 45.867'N
	Safety Zone	106° 46.549'W	37° 45.365'N
Dip 40	Water Source	106° 40.223'W	37° 37.378'N
Esconida Hydrant	Water Source	106° 38.772'W	37° 39.193'N
Fill Station	Water Source	106° 41.123'W	37° 42.038'N
Hay Dip	Water Source	106° 51.319'W	37° 41.048'N
Humphreys Dip	Water Source	106° 51.331'W	37° 40.672'N
Hydro 1	Water Source	106° 41.222'W	37° 42.008'N
Hydro 2	Water Source	106° 41.158'W	37° 42.018'N
Hydro 3	Water Source	106° 41.308'W	37° 41.958'N
Hydro 4	Water Source	106° 41.23'W	37° 41.942'N
Shaw Dip	Water Source	106° 47.69'W	37° 33.781'N
Water Shed	Water Source	106° 41.352'W	37° 41.958'N

( ) Division  
 [ ] Branch  
 [ ] Zone  
 [ ] TFR - issued 6/24/13 @ 0249 UTC  
 [ ] Zone Fence  
**Check Point**  
 ● ROTOR WING  
 ● FIXED WING  
 [ ] Uncontrolled Fire Edge  
 [ ] Div J/K line  
 [ ] Powerlines - Distribution  
 [ ] Powerlines - Transmission  
 [ ] Interstate  
 [ ] Paved Surface  
 [ ] Retardant Avoid Areas  
 ● Helispot  
 [ ] Retardant/Mud Pit  
 ● Camp  
 ● Drop Point  
 ⊗ Fire Origin  
 (H) Helibase  
 [ ] Incident Command Post  
 [ ] MediVac Site  
 [ ] Mobile Weather Unit  
 (R) Repeater  
 (S) Staging Area  
 (W) Water Source



KDH Date: 6/29/2013 Time: 1:11:05 AM  
 Coordinate System: NAD 1983 UTM Zone 13N  
 Projection: Transverse Mercator  
 Datum: North American 1983  
 False Easting: 500,000.0000  
 False Northing: 0.0000  
 Central Meridian: -105.0000  
 Scale Factor: 0.9996  
 Latitude Of Origin: 0.0000  
 Units: Meter