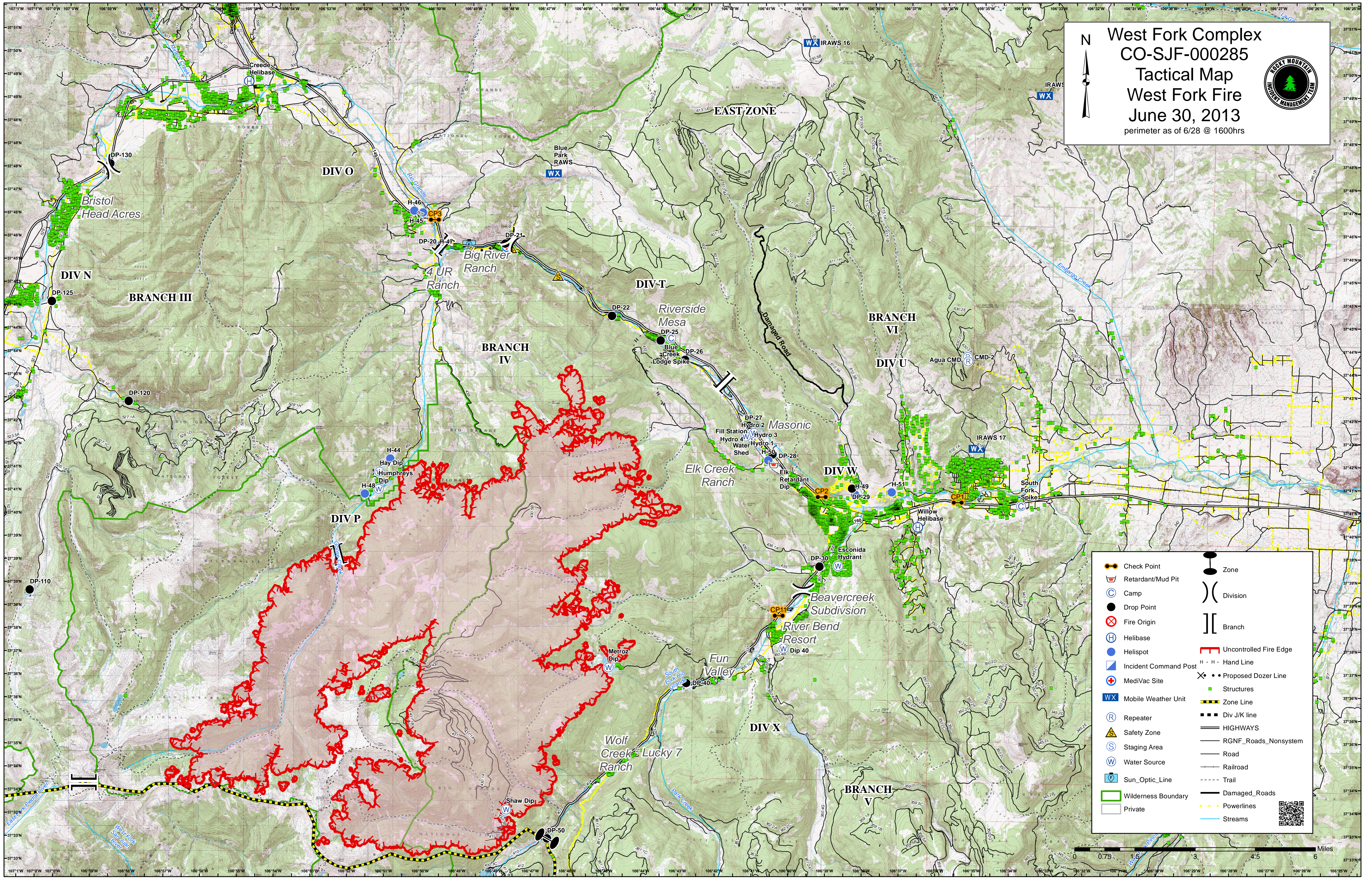


West Fork Complex
CO-SJF-000285
Tactical Map
West Fork Fire
June 30, 2013
 perimeter as of 6/28 @ 1600hrs



| | | | |
|--|-----------------------|--|------------------------|
| | Check Point | | Zone |
| | Retardant/Mud Pit | | Division |
| | Camp | | Branch |
| | Drop Point | | Uncontrolled Fire Edge |
| | Fire Origin | | H - H - Hand Line |
| | Helibase | | Proposed Dozer Line |
| | Helispot | | Structures |
| | Incident Command Post | | Zone Line |
| | Mobile Weather Unit | | Div J/K line |
| | Repeater | | HIGHWAYS |
| | Safety Zone | | RGNF_Roads_Nonsystem |
| | Staging Area | | Road |
| | Water Source | | Railroad |
| | Sun_Optic_Line | | Trail |
| | Wilderness Boundary | | Damaged_Roads |
| | Private | | Powerlines |
| | | | Streams |

