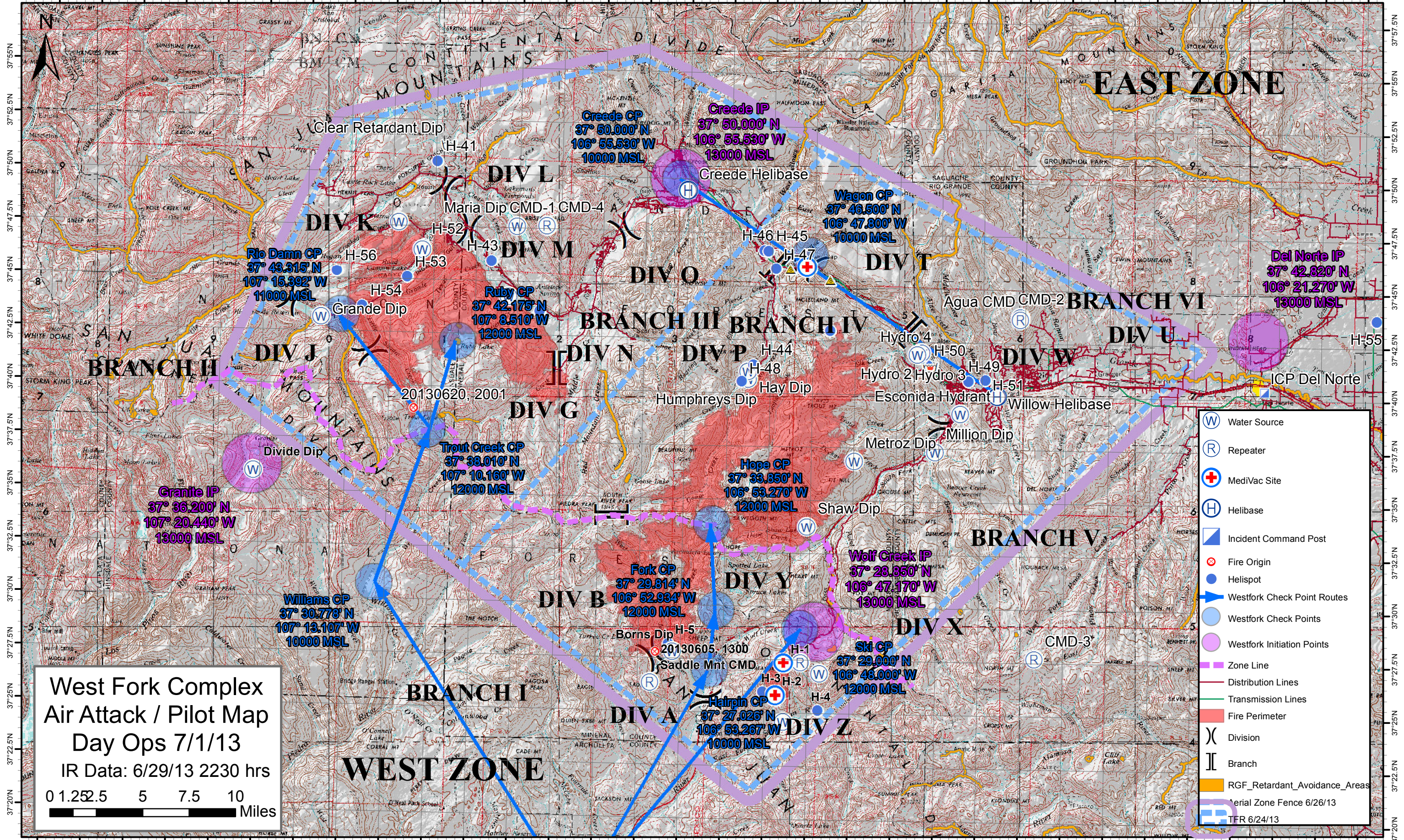


107°32.5'W 107°30'W 107°27.5'W 107°25'W 107°22.5'W 107°20'W 107°17.5'W 107°15'W 107°12.5'W 107°10'W 107°7.5'W 107°5'W 107°2.5'W 107°0'W 106°57.5'W 106°55'W 106°52.5'W 106°50'W 106°47.5'W 106°45'W 106°42.5'W 106°40'W 106°37.5'W 106°35'W 106°32.5'W 106°30'W 106°27.5'W 106°25'W 106°22.5'W 106°20'W 106°17.5'W 106°15'W



# EAST ZONE

# WEST ZONE

**West Fork Complex  
Air Attack / Pilot Map  
Day Ops 7/1/13**

IR Data: 6/29/13 2230 hrs

0 1.25 5 7.5 10  
Miles

- Water Source
- Repeater
- MediVac Site
- Helibase
- Incident Command Post
- Fire Origin
- Helispot
- Westfork Check Point Routes
- Westfork Check Points
- Westfork Initiation Points
- Zone Line
- Distribution Lines
- Transmission Lines
- Fire Perimeter
- Division
- Branch
- RGF\_Retardant\_Avoidance\_Areas
- Aerial Zone Fence 6/26/13
- TFR 6/24/13

**Creede CP**  
37° 50.000' N  
106° 55.530' W  
10000 MSL

**Creede IP**  
37° 50.000' N  
106° 55.530' W  
13000 MSL

**Wagon CP**  
37° 46.500' N  
106° 47.800' W  
10000 MSL

**Rio Damn CP**  
37° 49.315' N  
107° 15.392' W  
11000 MSL

**Ruby CP**  
37° 42.175' N  
107° 8.510' W  
12000 MSL

**Granite IP**  
37° 36.200' N  
107° 20.440' W  
13000 MSL

**Trout Creek CP**  
37° 38.010' N  
107° 10.160' W  
12000 MSL

**Hope CP**  
37° 33.850' N  
106° 53.270' W  
12000 MSL

**Williams CP**  
37° 30.778' N  
107° 13.107' W  
10000 MSL

**Fork CP**  
37° 29.814' N  
106° 52.934' W  
12000 MSL

**Wolf Creek IP**  
37° 28.850' N  
106° 47.170' W  
13000 MSL

**Ski CP**  
37° 29.000' N  
106° 48.000' W  
12000 MSL

**Hairpin CP**  
37° 27.026' N  
106° 53.267' W  
10000 MSL

**Del Norte IP**  
37° 42.820' N  
106° 21.270' W  
13000 MSL

Creede Helibase

Agua CMD CMD-2

BRANCH VI

DIV U

BRANCH III BRANCH IV

DIV N

DIV P

DIV W

DIV G

BRANCH V

DIV B

DIV Y

DIV X

BRANCH I

DIV A

DIV Z

CMD-3