

107°0'W

106°58'W

106°56'W



37°32'N

37°32'N

37°30'N

37°30'N

37°28'N

37°28'N

**DIV B**

**BRANCH I**

**H-5**

**Borns Dip**

**DIV A**

**Saddle Mnt CMD**



Copyright © 2013 Esri, DeLorme, NAVTEQ, TomTom

107°0'W

106°58'W

106°56'W

106°54'W

106°52'W

106°50'W

37°32'N

37°32'N

37°30'N

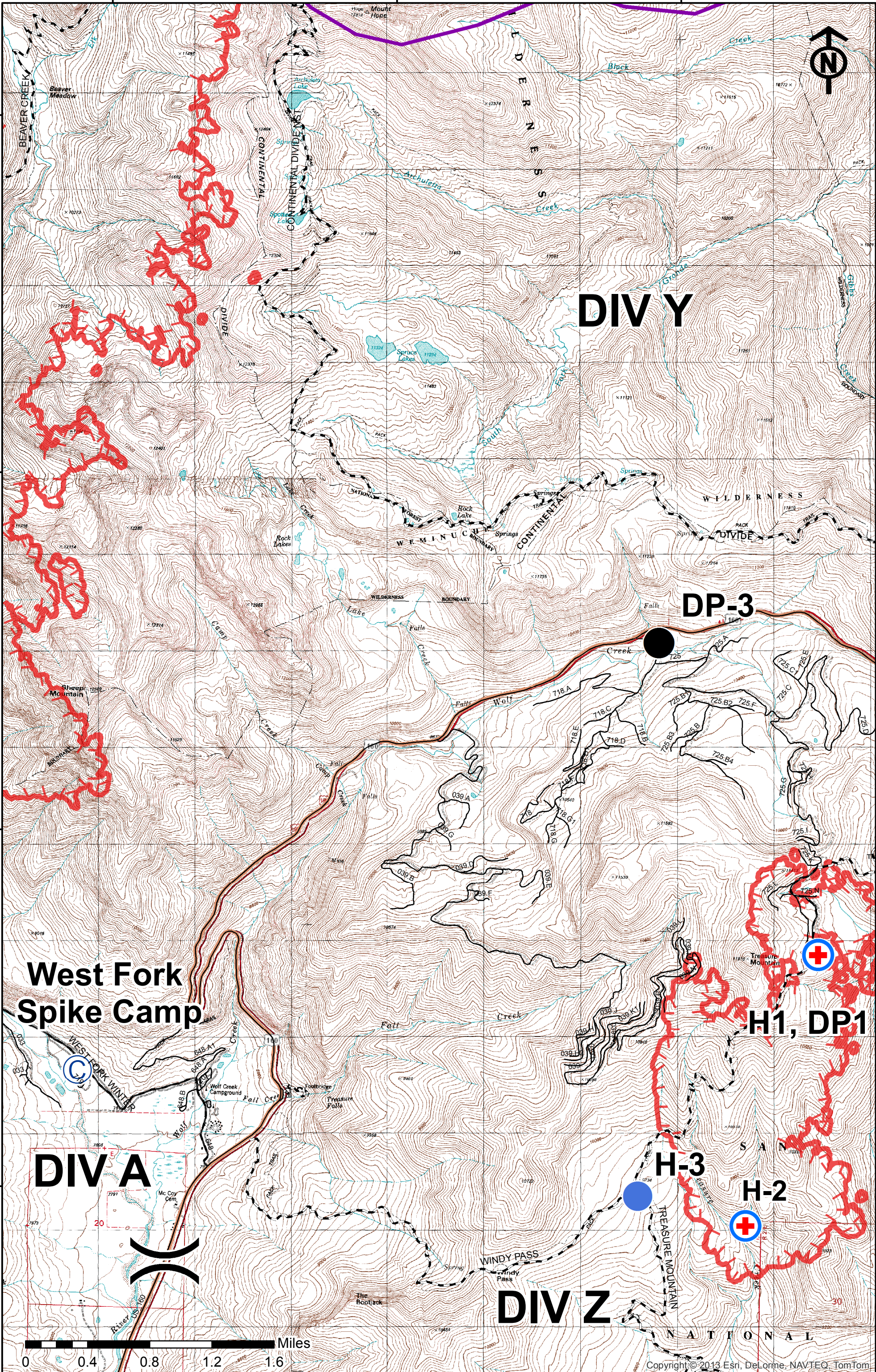
37°30'N

37°28'N

37°28'N

37°26'N

37°26'N



**DIV Y**

**DP-3**

**West Fork  
Spike Camp**

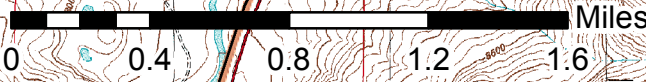
**H1, DP1**

**DIV A**

**H-3**

**H-2**

**DIV Z**



Copyright © 2013 Esri, DeLorme, NAVTEQ, TomTom

106°48'W

106°46'W

106°44'W

37°32'N

37°32'N

37°30'N

37°30'N

37°28'N

37°28'N

37°26'N

37°26'N



# DIV X

**WX**

**DP-2**

## Wolf Creek CMD

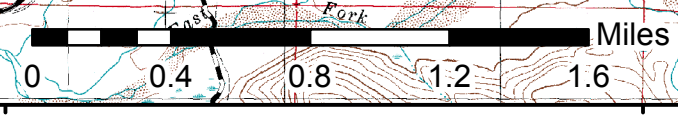
**R**

## High Dip

**W**

# DIV Z

**DP-4 H-4**



Copyright © 2013 Esri, Delorme, NAVTEQ, TomTom

106°48'W

106°46'W

106°44'W

106°42'W