

107°0'W

106°58'W

106°56'W



37°32'N

37°32'N

37°30'N

37°30'N

37°28'N

37°28'N

DIV B

BRANCH I

H-5

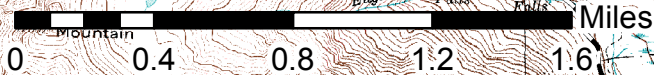
Borns Dip

DIV A

Saddle Mnt CMD



Copyright © 2013, Esri, DeLorme, NAVTEQ, TomTom



107°0'W

106°58'W

106°56'W

PAGE: 1

106°54'W

106°52'W

106°50'W

37°32'N

37°32'N

37°30'N

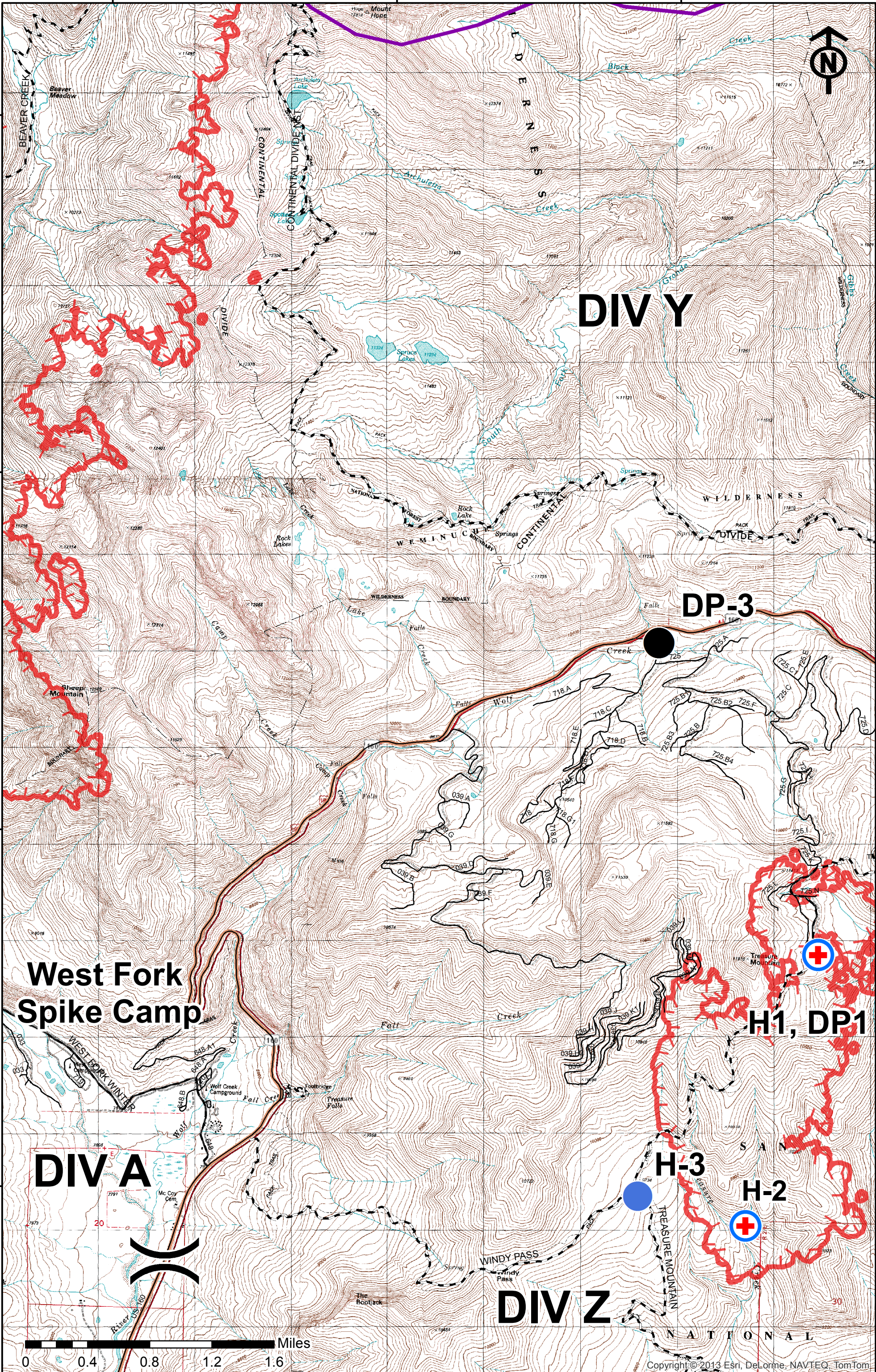
37°30'N

37°28'N

37°28'N

37°26'N

37°26'N



DIV Y

DP-3

**West Fork
Spike Camp**

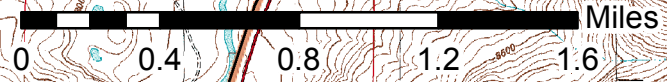
H1, DP1

DIV A

H-3

H-2

DIV Z



Copyright © 2013 Esri, DeLorme, NAVTEQ, TomTom

106°48'W

106°46'W

106°44'W

37°32'N

37°32'N

37°30'N

37°30'N

37°28'N

37°28'N

37°26'N

37°26'N



DIV X

DP-2

Wolf Creek CMD

High Dip

DIV Z

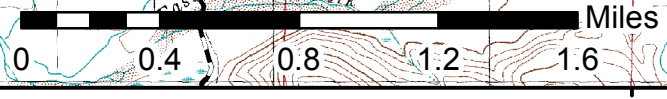
DP-4 H-4

WX

W

R

W



Copyright © 2013 Esri, DeLorme, NAVTEQ, TomTom

106°48'W

106°46'W

106°44'W

106°42'W

Produced on: 7/1/2013 10:39:03 PM

PAGE: 3