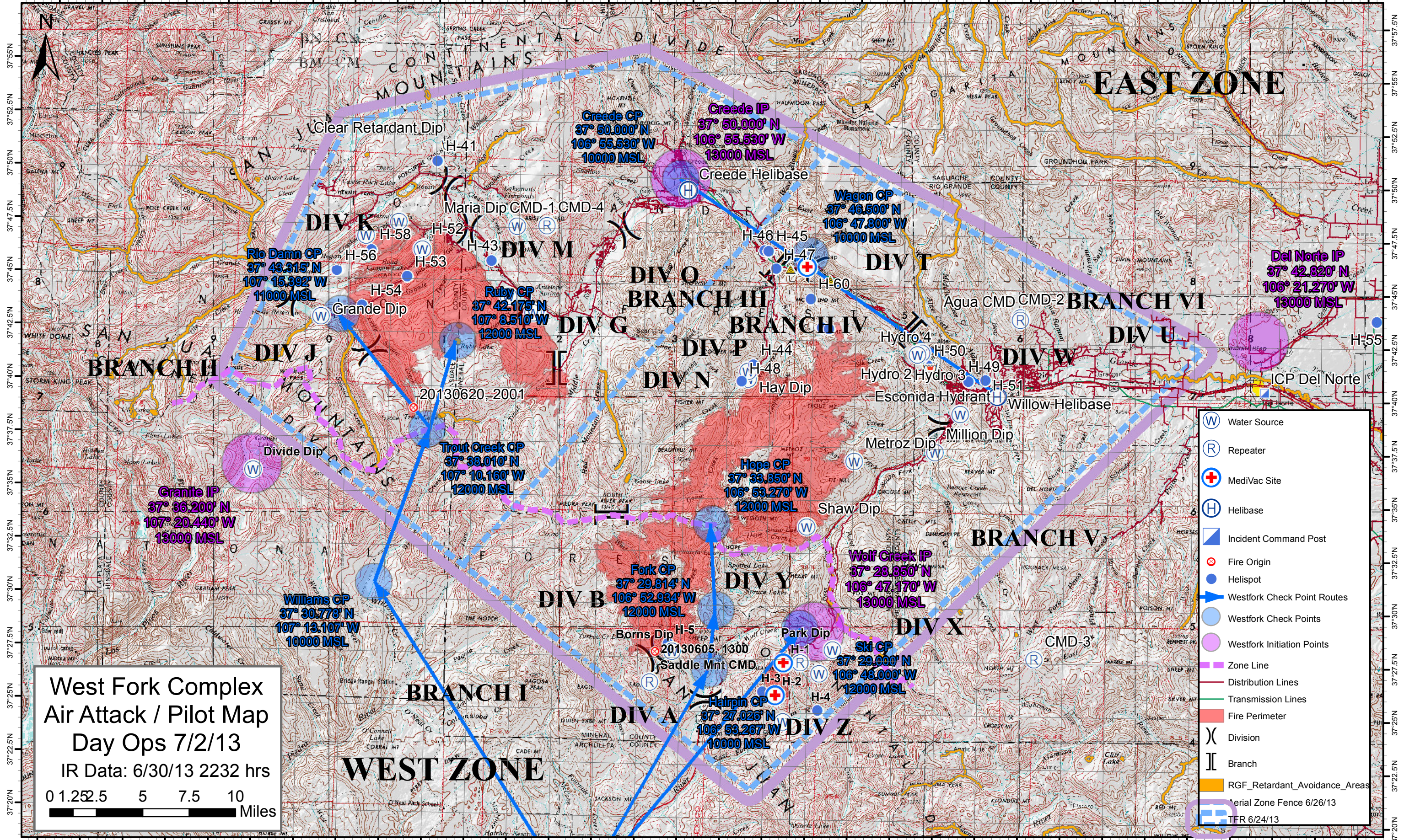


107°32.5'W 107°30'W 107°27.5'W 107°25'W 107°22.5'W 107°20'W 107°17.5'W 107°15'W 107°12.5'W 107°10'W 107°7.5'W 107°5'W 107°2.5'W 107°0'W 106°57.5'W 106°55'W 106°52.5'W 106°50'W 106°47.5'W 106°45'W 106°42.5'W 106°40'W 106°37.5'W 106°35'W 106°32.5'W 106°30'W 106°27.5'W 106°25'W 106°22.5'W 106°20'W 106°17.5'W 106°15'W



**West Fork Complex
Air Attack / Pilot Map
Day Ops 7/2/13**
IR Data: 6/30/13 2232 hrs

0 1.25 5 7.5 10 Miles

- Water Source (W)
- Repeater (R)
- MediVac Site (+)
- Helibase (H)
- Incident Command Post (I)
- Fire Origin (F)
- Helispot (H)
- Westfork Check Point Routes (Blue arrow)
- Westfork Check Points (Blue circle)
- Westfork Initiation Points (Purple circle)
- Zone Line (Purple line)
- Distribution Lines (Red line)
- Transmission Lines (Green line)
- Fire Perimeter (Red outline)
- Division (X)
- Branch (||)
- RGF_Retardant_Avoidance_Areas (Yellow)
- Aerial Zone Fence 6/26/13 (Blue dashed)
- TFR 6/24/13 (Blue solid)

107°32.5'W 107°30'W 107°27.5'W 107°25'W 107°22.5'W 107°20'W 107°17.5'W 107°15'W 107°12.5'W 107°10'W 107°7.5'W 107°5'W 107°2.5'W 107°0'W 106°57.5'W 106°55'W 106°52.5'W 106°50'W 106°47.5'W 106°45'W 106°42.5'W 106°40'W 106°37.5'W 106°35'W 106°32.5'W 106°30'W 106°27.5'W 106°25'W 106°22.5'W 106°20'W 106°17.5'W 106°15'W