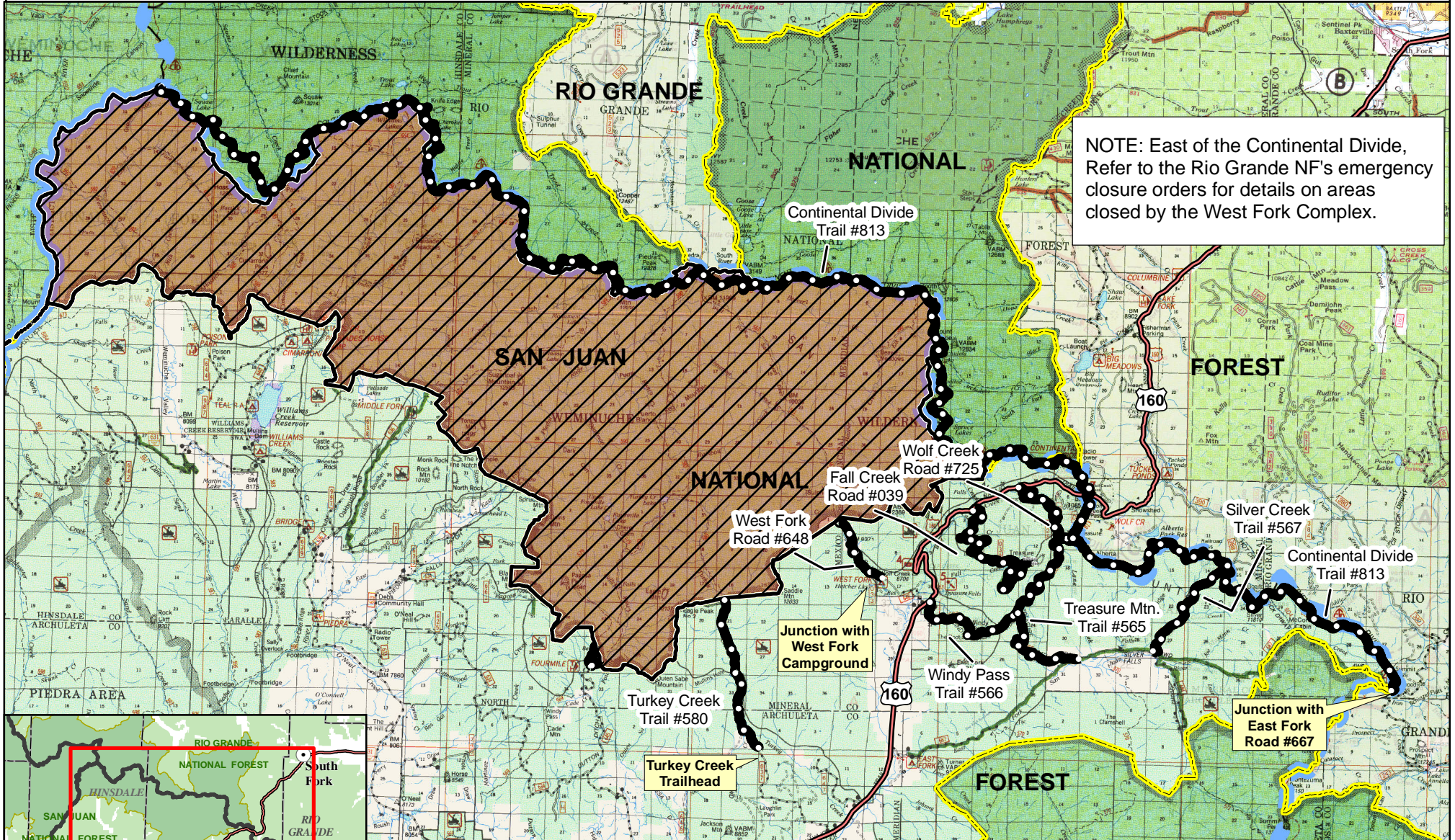


Exhibit 1 -- Road, Trail and Area Closures - Order #SJ-2013-09

Pagosa Ranger District - San Juan National Forest



NOTE: East of the Continental Divide, Refer to the Rio Grande NF's emergency closure orders for details on areas closed by the West Fork Complex.

Legend

- Wilderness
- National Forest Land
- Ranger District Boundary
- Road or Trail Identified within Closure Order
- Area within Weminuche Wilderness on the Pagosa Ranger District Identified within Closure Order

N

0 2.5 5 Miles

DISCLAIMER: GIS data and product accuracy may vary. The Forest Service reserves the right to correct, update, modify, or replace GIS products without notification. For more information, contact the San Juan NF, Durango, CO. (970) 247-4874 MDR 7/3/2013