

# West Fork Complex: West Fork Fire

## Pilot Map

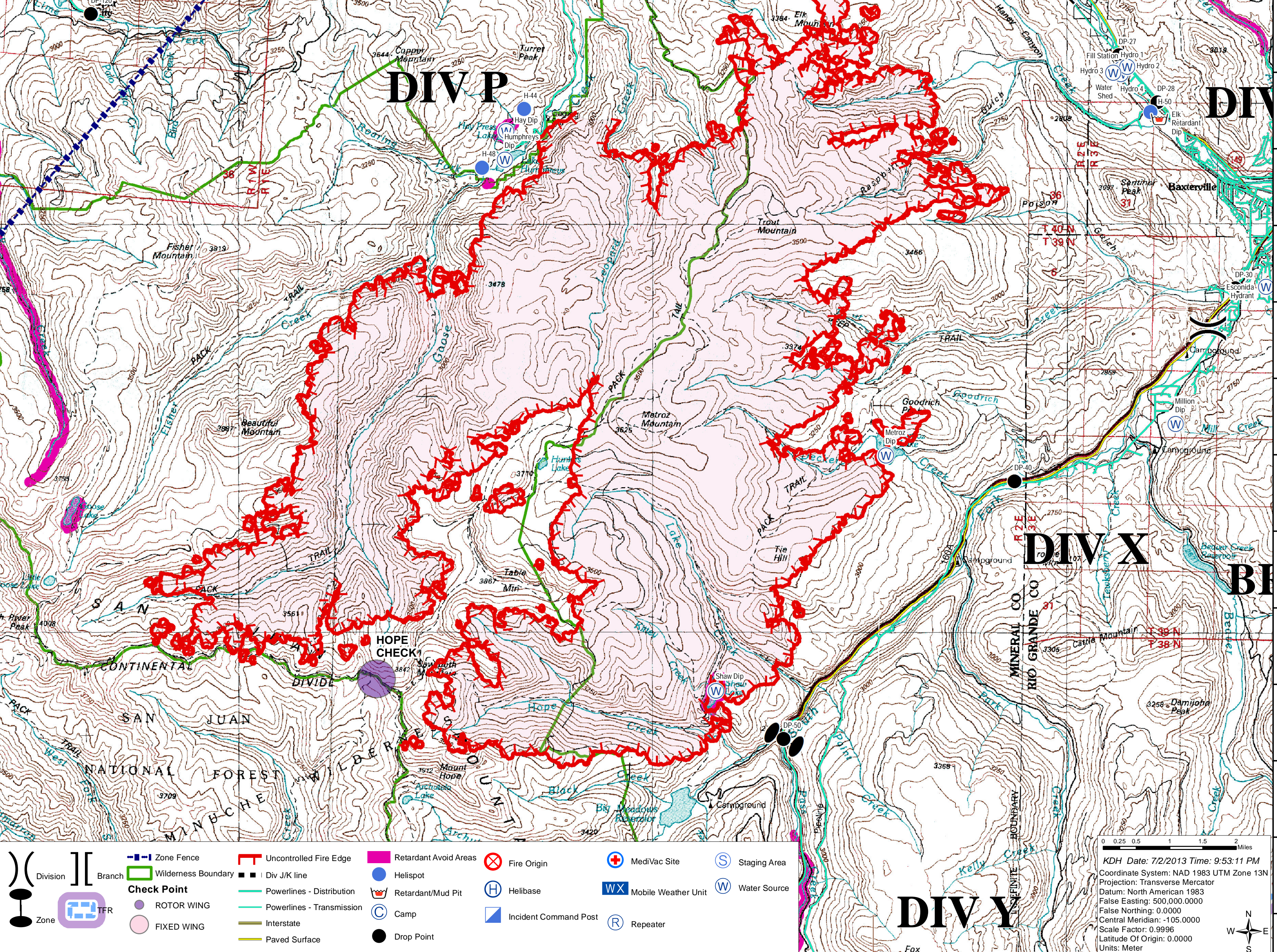
### CO-SJF-000285

July 3, 2013

West Fork Perimeter as of 07-01-2013 2328 hrs  
75,501 ac



Label	Type	Long	Lat
Blue Creek Lodge Spike	Camp	106° 47.811W	37° 46.13N
Papoose Auxiliary	Camp	106° 6.676W	37° 45.888N
South Fork Spike	Camp	106° 33.815W	37° 40.551N
West Fork Spike	Camp	106° 54.092W	37° 26.653N
Crooked Check	Check Point	106° 55.539W	37° 30.808N
Crooked IP	Check Point	106° 55.539W	37° 30.000N
Del Norte IP	Check Point	106° 21.270W	37° 42.800N
Fork Check	Check Point	106° 52.934W	37° 29.814N
Granite IP	Check Point	107° 20.440W	37° 36.200N
Harpin Check	Check Point	106° 53.267W	37° 27.026N
Huge Check	Check Point	106° 53.270W	37° 33.850N
Los Dams Check	Check Point	107° 15.362W	37° 43.511N
Ridgy Check	Check Point	107° 08.510W	37° 42.175N
SU Check	Check Point	106° 48.000W	37° 29.000N
Trout Check	Check Point	107° 10.160W	37° 38.01N
Wagon Check	Check Point	107° 47.800W	37° 46.500N
Williams Check	Check Point	107° 13.107W	37° 30.788N
Wolf Creek IP	Check Point	107° 47.170W	37° 28.850N
DP-1	Drop Point	106° 48.907W	37° 35.367N
DP-2	Drop Point	106° 47.597W	37° 35.367N
DP-3	Drop Point	106° 50.067W	37° 29.117N
DP-4	Drop Point	106° 46.682W	37° 25.187N
DP-20	Drop Point	106° 49.715W	37° 46.027N
DP-21	Drop Point	106° 48.127W	37° 46.025N
DP-22	Drop Point	106° 44.232W	37° 44.175N
DP-25	Drop Point	106° 43.718W	37° 44.011N
DP-26	Drop Point	106° 41.997W	37° 44.328N
DP-27	Drop Point	106° 41.263W	37° 42.191N
DP-28	Drop Point	106° 40.613W	37° 41.586N
DP-29	Drop Point	106° 38.428W	37° 40.872N
DP-30	Drop Point	106° 39.277W	37° 39.169N
DP-40	Drop Point	106° 42.851W	37° 36.597N
DP-50	Drop Point	106° 46.565W	37° 33.17N
DP-71	Drop Point	107° 15.376W	37° 43.511N
DP-76	Drop Point	107° 02.073W	37° 44.328N
DP-78	Drop Point	107° 16.304W	37° 44.342N
DP-80	Drop Point	107° 13.038W	37° 44.426N
DP-90	Drop Point	107° 10.795W	37° 47.358N
DP-92	Drop Point	107° 8.971W	37° 50.902N
DP-93	Drop Point	107° 12.285W	37° 53.315N
DP-94	Drop Point	107° 10.597W	37° 53.472N
DP-96	Drop Point	107° 9.237W	37° 55.843N
DP-100	Drop Point	107° 3.709W	37° 43.667N
DP-105	Drop Point	107° 2.235W	37° 41.232N
DP-108	Drop Point	107° 1.594W	37° 39.875N
DP-110	Drop Point	106° 0.782W	37° 38.34N
DP-120	Drop Point	106° 58.19W	37° 42.468N
DP-125	Drop Point	107° 0.348W	37° 44.6N
DP-130	Drop Point	106° 58.062W	37° 43.667N
DP-140	Drop Point	106° 54.291W	37° 48.860N
DP-145	Drop Point	106° 52.917W	37° 48.860N
Hellbase	Hellbase	107° 0.845W	37° 16.028N
Crooked Hellbase	Hellbase	106° 55.084W	37° 49.454N
Milow Hellbase	Hellbase	106° 36.617W	37° 40.056N
H-1	Helispot	106° 48.907W	37° 27.387N
H-2	Helispot	106° 49.379W	37° 25.861N
H-3	Helispot	106° 50.141W	37° 26.815N
H-4	Helispot	106° 49.713W	37° 25.843N
H-5	Helispot	106° 55.719W	37° 28.207N
H-41	Helispot	107° 9.916W	37° 50.578N
H-42	Helispot	107° 3.709W	37° 43.667N
H-43	Helispot	107° 6.584W	37° 45.969N
H-44	Helispot	106° 51.031W	37° 41.342N
H-45	Helispot	106° 50.267W	37° 46.684N
H-46	Helispot	106° 50.569W	37° 45.378N
H-47	Helispot	106° 49.82W	37° 45.878N
H-48	Helispot	106° 51.698W	37° 40.565N
H-49	Helispot	106° 38.34W	37° 40.742N
H-50	Helispot	106° 40.724W	37° 41.456N
H-51	Helispot	106° 37.345W	37° 40.804N
H-52	Helispot	107° 10.605W	37° 46.68N
H-53	Helispot	107° 11.565W	37° 45.378N
H-54	Helispot	107° 14.161W	37° 43.748N
H-55	Helispot	106° 14.299W	37° 43.8N
H-56	Helispot	107° 15.705W	37° 45.351N
H-57	Helispot	107° 47.017W	37° 43.15N
H-58	Helispot	107° 13.694W	37° 46.372N
H-59	Helispot	106° 46.617W	37° 43.095N
H-60	Helispot	106° 47.717W	37° 44.453N
H-62	Helispot	106° 49.657W	37° 43.183N
H-64	Helispot	107° 00.714W	37° 38.378N
ICP Del Norte	Incident Command Post	106° 20.85W	37° 40.442N
ICP Pagosa	Incident Command Post	107° 0.789W	37° 15.977N
MedVac Site	MedVac Site	106° 47.965W	37° 45.97N
MedVac Site	MedVac Site	106° 48.907W	37° 27.387N
MedVac Site	MedVac Site	106° 49.379W	37° 25.861N
SJF2 Pagosa Portable	Mobile Weather Unit	106° 46.717W	37° 47.528N
IRAWS 13	Mobile Weather Unit	107° 3.37W	37° 47.673N
IRAWS 14	Mobile Weather Unit	107° 7.37W	37° 47.948N
IRAWS 15	Mobile Weather Unit	106° 33.45W	37° 49.452N
IRAWS 16	Mobile Weather Unit	106° 39.378W	37° 50.518N
IRAWS 17	Mobile Weather Unit	106° 35.048W	37° 41.782N
Agua CMD	Repeater	106° 35.227W	37° 43.671N
CMD-1	Repeater	107° 3.347W	37° 47.497N
CMD-2	Repeater	106° 35.333W	37° 43.767N
CMD-3	Repeater	106° 34.202W	37° 27.745N
CMD-4	Repeater	107° 3.37W	37° 47.673N
Saddle Mt CMD	Repeater	106° 56.741W	37° 26.373N
Wolf Creek CMD	Repeater	106° 47.923W	37° 27.425N
Clear Retardant Dip	Retardant/Mud Pit	107° 9.234W	37° 51.339N
FA Station	Water Source	106° 38.723W	37° 39.318N
Grande Dip	Water Source	106° 41.123W	37° 42.038N
Hay Dip	Water Source	107° 16.584W	37° 43.207N
High Dip	Water Source	106° 51.319W	37° 41.048N
Humphreys Dip	Water Source	106° 46.8W	37° 26.9N
Hydro 1	Water Source	106° 41.222W	37° 42.088N
Hydro 2	Water Source	106° 41.158W	37° 42.088N
Hydro 3	Water Source	106° 40.388W	37° 41.808N
Hydro 4	Water Source	106° 41.22W	37° 41.942N
Jason's Dip	Water Source	107° 04.089W	37° 43.587N
Ladders Dip	Water Source	106° 48.889W	37° 24.618N
Lazy Dip	Water Source	107° 14.016W	37° 47.051N
Marip Dip	Water Source	107° 5.14W	37° 47.623N
Metroz Dip	Water Source	106° 44.974W	37° 36.911N
Water Source	Water Source	106° 40.227W	37° 37.318N
Park Dip	Water Source	106° 46.042W	37° 28.049N
Powerline Dip	Water Source	107° 5.556W	37° 44.229N
Ranch Dip	Water Source	107° 12.123W	37° 47.717N
Shaw Dip	Water Source	106° 47.69W	37° 33.781N
Water Shed	Water Source	106° 41.352W	37° 41.958N



Zone	Branch	Wilderness Boundary	Div J/K line	Retardant Avoid Areas	Fire Origin	MediVac Site	Staging Area
Check Point	Powerlines - Distribution	Powerlines - Transmission	Interstate	Paved Surface	Helispot	Retardant/Mud Pit	Camp
Rotor Wing	Fixed Wing	Helibase	Incident Command Post	Drop Point	Mobile Weather Unit	Repeater	Water Source

0 0.25 0.5 1 1.5 2 Miles

KDH Date: 7/2/2013 Time: 9:53:11 PM  
 Coordinate System: NAD 1983 UTM Zone 13N  
 Projection: Transverse Mercator  
 Datum: North American 1983  
 False Easting: 500,000.0000  
 False Northing: 0.0000  
 Central Meridian: -105.0000  
 Scale Factor: 0.9996  
 Latitude Of Origin: 0.0000  
 Units: Meter