
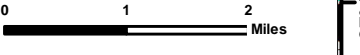
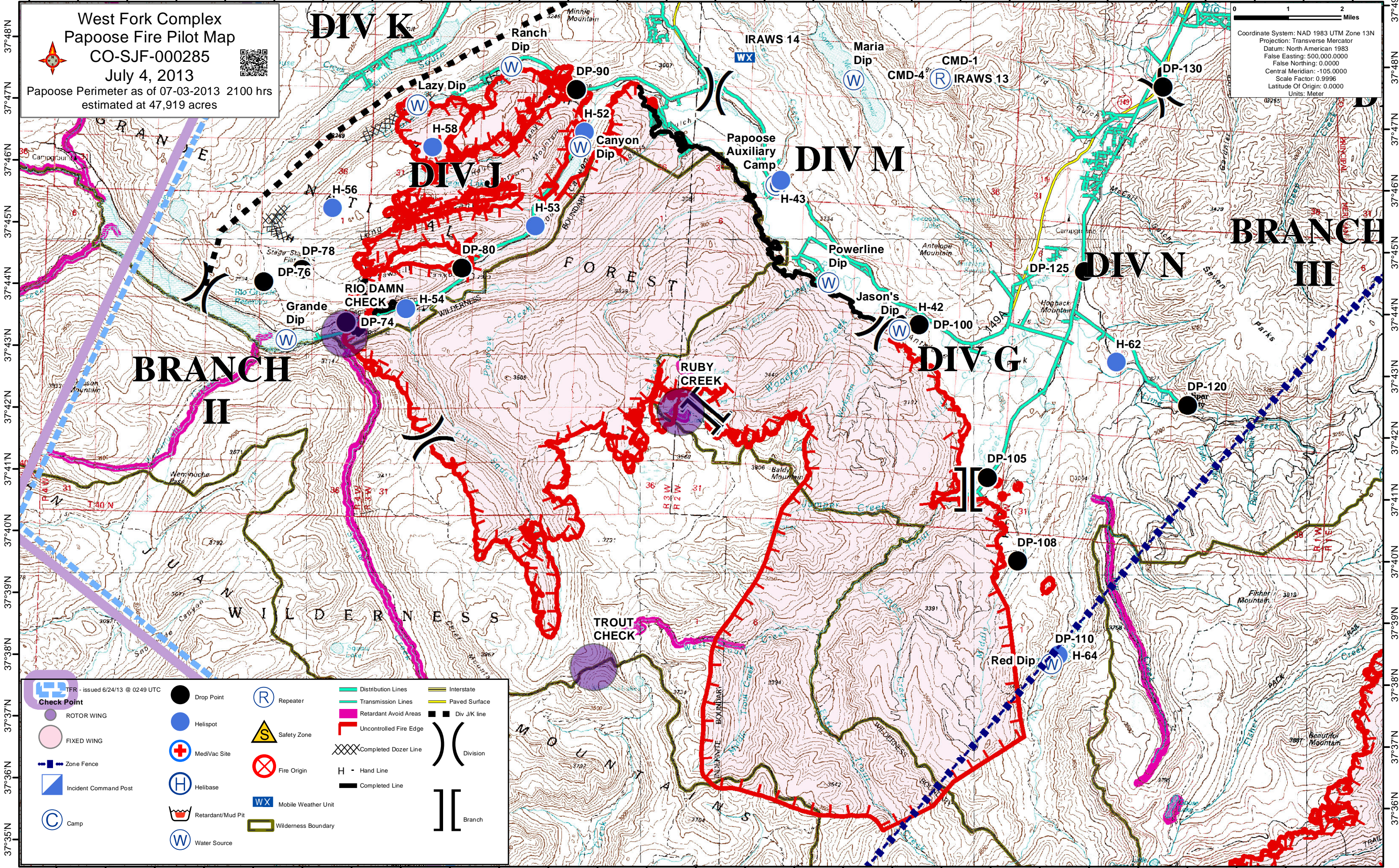


107°22'W 107°21'W 107°20'W 107°19'W 107°18'W 107°17'W 107°16'W 107°15'W 107°14'W 107°13'W 107°12'W 107°11'W 107°10'W 107°9'W 107°8'W 107°7'W 107°6'W 107°5'W 107°4'W 107°3'W 107°2'W 107°1'W 107°0'W 106°59'W 106°58'W 106°57'W 106°56'W 106°55'W

West Fork Complex
Papoose Fire Pilot Map
CO-SJF-000285
 July 4, 2013
 Papoose Perimeter as of 07-03-2013 2100 hrs
 estimated at 47,919 acres

Coordinate System: NAD 1983 UTM Zone 13N
 Projection: Transverse Mercator
 Datum: North American 1983
 False Easting: 500,000.0000
 False Northing: 0.0000
 Central Meridian: -105.0000
 Scale Factor: 0.9996
 Latitude Of Origin: 0.0000
 Units: Meter



 Check Point	 Drop Point	 Repeater	 Distribution Lines	 Interstate
 ROTOR WING	 Helispot	 Safety Zone	 Transmission Lines	 Paved Surface
 FIXED WING	 MediVac Site	 Fire Origin	 Retardant Avoid Areas	 Div J/K line
 Zone Fence	 Helibase	 Completed Dozer Line	 Uncontrolled Fire Edge	 Division
 Incident Command Post	 Mobile Weather Unit	 Hand Line	 Completed Line	 Branch
 Camp	 Retardant/Mud Pit	 Wilderness Boundary		
 Water Source				

107°21'W 107°20'W 107°19'W 107°18'W 107°17'W 107°16'W 107°15'W 107°14'W 107°13'W 107°12'W 107°11'W 107°10'W 107°9'W 107°8'W 107°7'W 107°6'W 107°5'W 107°4'W 107°3'W 107°2'W 107°1'W 107°0'W 106°59'W 106°58'W 106°57'W 106°56'W 106°55'W

Label	Type	Long	Lat
Blue Creek Lodge Spike	Camp	106° 47.811'W	37° 46.13'N
Papoose Auxiliary	Camp	107° 6.676'W	37° 45.888'N
South Fork Spike	Camp	106° 33.815'W	37° 40.551'N
West Fork Spike	Camp	106° 54.092'W	37° 26.663'N
Creede Check	Check Point	106° 55.530'W	37° 50.000'N
Creede IP	Check Point	106° 55.530'W	37° 50.000'N
Del Norte IP	Check Point	106° 21.270'W	37° 42.820'N
Fork Check	Check Point	106° 52.934'W	37° 29.814'N
Granite IP	Check Point	107° 20.440'W	37° 36.200'N
Hairpin Check	Check Point	106° 53.267'W	37° 27.026'N
Hope Check	Check Point	106° 53.270'W	37° 33.850'N
Rio Dann Check	Check Point	107° 15.392'W	37° 43.315'N
Ruby Check	Check Point	107° 08.510'W	37° 42.175'N
Ski Check	Check Point	106° 48.000'W	37° 29.000'N
Trout Check	Check Point	107° 10.160'W	37° 38.01'N
Wagon Check	Check Point	106° 47.800'W	37° 46.500'N
Williams Check	Check Point	107° 13.107'W	37° 30.778'N
Wolf Creek IP	Check Point	106° 47.170'W	37° 28.850'N
DP-1	Drop Point	106° 48.907'W	37° 27.387'N
DP-2	Drop Point	106° 47.597'W	37° 28.365'N
DP-3	Drop Point	106° 50.067'W	37° 29.117'N
DP-4	Drop Point	106° 46.682'W	37° 25.187'N
DP-20	Drop Point	106° 49.715'W	37° 46.027'N
DP-21	Drop Point	106° 48.127'W	37° 46.025'N
DP-22	Drop Point	106° 44.232'W	37° 44.175'N
DP-25	Drop Point	106° 43.718'W	37° 44.011'N
DP-26	Drop Point	106° 43.042'W	37° 43.61'N
DP-27	Drop Point	106° 41.263'W	37° 42.191'N
DP-28	Drop Point	106° 40.613'W	37° 41.586'N
DP-29	Drop Point	106° 38.428'W	37° 40.872'N
DP-30	Drop Point	106° 39.277'W	37° 39.169'N
DP-40	Drop Point	106° 42.851'W	37° 36.597'N
DP-50	Drop Point	106° 46.565'W	37° 33.17'N
DP-74	Drop Point	107° 15.376'W	37° 43.51'N
DP-76	Drop Point	107° 17.071'W	37° 44.132'N
DP-78	Drop Point	107° 16.304'W	37° 44.342'N
DP-80	Drop Point	107° 13.038'W	37° 44.426'N
DP-90	Drop Point	107° 10.795'W	37° 47.358'N
DP-92	Drop Point	107° 8.971'W	37° 50.902'N
DP-93	Drop Point	107° 12.285'W	37° 53.315'N
DP-94	Drop Point	107° 10.591'W	37° 53.472'N
DP-96	Drop Point	107° 9.731'W	37° 55.863'N
DP-100	Drop Point	107° 3.709'W	37° 43.667'N
DP-105	Drop Point	107° 2.235'W	37° 41.232'N
DP-108	Drop Point	107° 1.594'W	37° 39.875'N
DP-110	Drop Point	107° 0.782'W	37° 38.34'N
DP-120	Drop Point	106° 58.19'W	37° 42.468'N
DP-125	Drop Point	107° 0.348'W	37° 44.61'N
DP-130	Drop Point	106° 58.829'W	37° 47.612'N
DP-140	Drop Point	106° 54.291'W	37° 48.860'N
DP-180	Drop Point	106° 50.495'W	37° 46.658'N
	Helibase	107° 0.845'W	37° 16.028'N
Creede Helibase	Helibase	106° 55.084'W	37° 49.454'N
Willow Helibase	Helibase	106° 36.617'W	37° 40.056'N
H-1	Helispot	106° 48.907'W	37° 27.387'N
H-2	Helispot	106° 49.379'W	37° 25.861'N
H-3	Helispot	106° 50.141'W	37° 26.015'N
H-4	Helispot	106° 46.869'W	37° 25.193'N
H-5	Helispot	106° 55.719'W	37° 28.207'N
H-41	Helispot	107° 9.916'W	37° 50.578'N
H-42	Helispot	107° 3.709'W	37° 43.667'N
H-43	Helispot	107° 6.584'W	37° 45.969'N
H-44	Helispot	106° 51.031'W	37° 41.342'N
H-45	Helispot	106° 50.267'W	37° 46.684'N
H-46	Helispot	106° 50.505'W	37° 46.72'N
H-47	Helispot	106° 49.8'W	37° 45.878'N

Label	Type	Long	Lat
H-48	Helispot	106° 51.698'W	37° 40.565'N
H-49	Helispot	106° 38.34'W	37° 40.742'N
H-50	Helispot	106° 40.724'W	37° 41.456'N
H-51	Helispot	106° 37.345'W	37° 40.804'N
H-52	Helispot	107° 10.605'W	37° 46.68'N
H-53	Helispot	107° 11.565'W	37° 45.135'N
H-54	Helispot	107° 14.161'W	37° 43.748'N
H-55	Helispot	106° 14.29'W	37° 43.8'N
H-56	Helispot	107° 15.705'W	37° 45.351'N
H-57	Helispot	106° 47.017'W	37° 43.15'N
H-58	Helispot	107° 13.694'W	37° 46.372'N
H-59	Helispot	106° 46.617'W	37° 43.095'N
H-60	Helispot	106° 47.717'W	37° 44.483'N
H-62	Helispot	106° 59.663'W	37° 43.138'N
H-64	Helispot	107° 00.714'W	37° 38.378'N
ICP Del Norte	Incident Com	106° 20.85'W	37° 40.442'N
ICP Pagosa	Incident Com	107° 0.789'W	37° 15.977'N
	MediVac Site	106° 47.965'W	37° 45.97'N
	MediVac Site	106° 48.907'W	37° 27.387'N
	MediVac Site	106° 49.379'W	37° 25.861'N
SJF2 Pagosa	Mobile Weath	106° 48.023'W	37° 29.457'N
Blue Park RA	Mobile Weath	106° 46.717'W	37° 47.583'N
IRAWS 13	Mobile Weath	107° 3.37'W	37° 47.673'N
IRAWS 14	Mobile Weath	107° 7.37'W	37° 47.948'N
IRAWS 15	Mobile Weath	106° 33.345'W	37° 49.452'N
IRAWS 16	Mobile Weath	106° 39.738'W	37° 50.518'N
IRAWS 17	Mobile Weath	106° 35.048'W	37° 41.782'N
Agua CMD	Repeater	106° 35.322'W	37° 43.67'N
CMD-1	Repeater	107° 3.341'W	37° 47.649'N
CMD-2	Repeater	106° 35.333'W	37° 43.767'N
CMD-3	Repeater	106° 34.202'W	37° 27.745'N
CMD-4	Repeater	107° 3.37'W	37° 47.673'N
Saddle Mnt C	Repeater	106° 56.741'W	37° 26.373'N
Wolf Creek C	Repeater	106° 47.923'W	37° 27.425'N
Clear Retard	Retardant/ML	107° 9.234'W	37° 51.339'N
Elk Retardan	Retardant/ML	106° 40.577'W	37° 41.362'N
	Safety Zone	106° 47.845'W	37° 45.943'N
	Safety Zone	106° 48.939'W	37° 45.867'N
	Safety Zone	106° 46.549'W	37° 45.365'N
Borns Dip	Water Source	106° 55.462'W	37° 27.836'N
Canyon Dip	Water Source	107° 10.676'W	37° 46.438'N
Divide Dip	Water Source	107° 20.37'W	37° 35.95'N
Esconida Hy	Water Source	106° 38.772'W	37° 39.193'N
Fill Station	Water Source	106° 41.123'W	37° 42.038'N
Grande Dip	Water Source	107° 16.584'W	37° 43.207'N
Hay Dip	Water Source	106° 51.319'W	37° 41.048'N
High Dip	Water Source	106° 46.8'W	37° 26.9'N
Humphreys D	Water Source	106° 51.331'W	37° 40.672'N
Hydro 1	Water Source	106° 41.222'W	37° 42.008'N
Hydro 2	Water Source	106° 41.158'W	37° 42.018'N
Hydro 3	Water Source	106° 41.308'W	37° 41.958'N
Hydro 4	Water Source	106° 41.23'W	37° 41.942'N
Jason's Dip	Water Source	107° 04.089'W	37° 43.587'N
Ladders Dip	Water Source	106° 48.889'W	37° 24.618'N
Lazy Dip	Water Source	107° 14.016'W	37° 47.051'N
Maria Dip	Water Source	107° 5.14'W	37° 47.623'N
Metroz Dip	Water Source	106° 44.974'W	37° 36.901'N
Million Dip	Water Source	106° 40.223'W	37° 37.378'N
Park Dip	Water Source	106° 46.042'W	37° 28.049'N
Powerline Di	Water Source	107° 5.556'W	37° 44.329'N
Ranch Dip	Water Source	107° 12.123'W	37° 47.717'N
Red Dip	Water Source	107° 00.852'W	37° 38.235'N
Shaw Dip	Water Source	106° 47.69'W	37° 33.781'N
Water Shed	Water Source	106° 41.352'W	37° 41.958'N