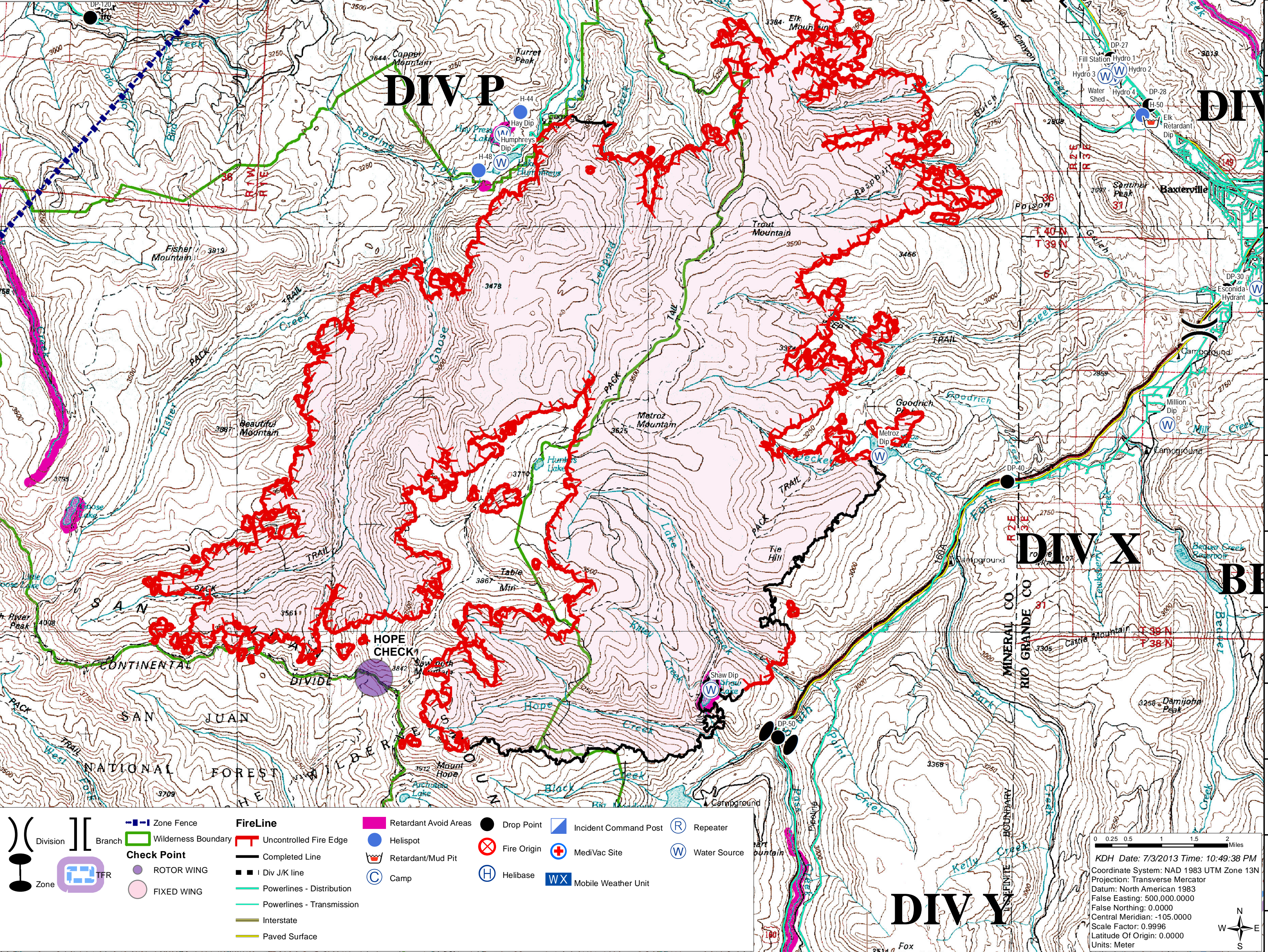


West Fork Complex: West Fork Fire
Pilot Map
CO-SJF-000285
July 4, 2013
West Fork Perimeter as of 07-03-2013 2100 hrs
Estimated 87,121 ac



Label	Type	Long	Lat
Blue Creek Lodge Spike	Camp	106° 47.811W	37° 46.13N
Papoose Auxiliary	Camp	107° 6.676W	37° 45.888N
South Fork Spike	Camp	106° 33.815W	37° 40.551N
West Fork Spike	Camp	106° 54.092W	37° 40.371N
Creede Check	Check Point	106° 55.530W	37° 50.000N
Creede IP	Check Point	106° 55.530W	37° 50.000N
Del Norte IP	Check Point	106° 21.270W	37° 42.820N
Fork Check	Check Point	106° 52.934W	37° 29.814N
Crane IP	Check Point	107° 20.440W	37° 36.200N
Harpin Check	Check Point	106° 53.267W	37° 27.025N
Ridge Check	Check Point	106° 53.267W	37° 27.025N
Rio Dam Check	Check Point	107° 15.392W	37° 43.315N
Ruby Check	Check Point	107° 08.510W	37° 42.175N
Ski Check	Check Point	106° 48.000W	37° 29.000N
Trout Check	Check Point	107° 10.160W	37° 38.01N
Wagon Check	Check Point	106° 47.800W	37° 46.500N
Williams Check	Check Point	107° 13.100W	37° 40.700N
Wolf Creek IP	Check Point	106° 47.170W	37° 28.850N
DP-1	Drop Point	106° 48.907W	37° 27.387N
DP-2	Drop Point	106° 47.597W	37° 28.365N
DP-3	Drop Point	106° 50.067W	37° 29.117N
DP-4	Drop Point	106° 46.682W	37° 25.187N
DP-20	Drop Point	106° 49.715W	37° 46.027N
DP-21	Drop Point	106° 48.127W	37° 46.025N
DP-22	Drop Point	106° 44.232W	37° 44.175N
DP-25	Drop Point	106° 43.718W	37° 44.011N
DP-26	Drop Point	106° 43.042W	37° 43.6N
DP-27	Drop Point	106° 41.263W	37° 42.191N
DP-28	Drop Point	106° 40.613W	37° 41.586N
DP-29	Drop Point	106° 38.428W	37° 40.872N
DP-30	Drop Point	106° 38.277W	37° 40.872N
DP-40	Drop Point	106° 42.851W	37° 36.597N
DP-50	Drop Point	106° 46.565W	37° 33.17N
DP-74	Drop Point	107° 15.376W	37° 43.51N
DP-76	Drop Point	107° 17.071W	37° 44.132N
DP-78	Drop Point	107° 16.304W	37° 44.342N
DP-80	Drop Point	107° 13.088W	37° 43.588N
DP-90	Drop Point	107° 10.795W	37° 47.358N
DP-92	Drop Point	107° 8.917W	37° 50.902N
DP-93	Drop Point	107° 12.285W	37° 53.315N
DP-94	Drop Point	107° 10.591W	37° 53.472N
DP-96	Drop Point	107° 9.731W	37° 55.863N
DP-100	Drop Point	107° 3.999W	37° 43.667N
DP-105	Drop Point	107° 2.253W	37° 41.327N
DP-108	Drop Point	107° 1.594W	37° 39.875N
DP-110	Drop Point	107° 0.782W	37° 38.34N
DP-120	Drop Point	106° 58.19W	37° 42.468N
DP-125	Drop Point	107° 0.348W	37° 44.6N
DP-130	Drop Point	106° 58.829W	37° 47.612N
DP-140	Drop Point	106° 54.291W	37° 48.860N
DP-180	Drop Point	106° 50.498W	37° 46.868N
Creede Helibase	Helibase	106° 55.084W	37° 49.454N
Willow Helibase	Helibase	106° 36.617W	37° 40.056N
H-1	Helispot	106° 48.907W	37° 27.387N
H-2	Helispot	106° 49.379W	37° 25.861N
H-3	Helispot	106° 58.147W	37° 20.015N
H-4	Helispot	106° 46.869W	37° 25.197N
H-5	Helispot	106° 55.719W	37° 28.207N
H-41	Helispot	107° 9.916W	37° 50.578N
H-42	Helispot	107° 3.999W	37° 43.667N
H-43	Helispot	107° 6.584W	37° 45.969N
H-44	Helispot	106° 51.031W	37° 41.342N
H-45	Helispot	106° 50.267W	37° 46.687N
H-46	Helispot	106° 50.505W	37° 46.727N
H-47	Helispot	106° 49.89W	37° 45.878N
H-48	Helispot	106° 51.698W	37° 40.565N
H-49	Helispot	106° 38.34W	37° 40.742N
H-50	Helispot	106° 40.724W	37° 41.456N
H-51	Helispot	106° 37.345W	37° 40.804N
H-52	Helispot	107° 10.465W	37° 46.687N
H-53	Helispot	107° 11.565W	37° 45.135N
H-54	Helispot	107° 14.161W	37° 43.748N
H-55	Helispot	106° 14.299W	37° 43.8N
H-56	Helispot	107° 15.705W	37° 45.351N
H-57	Helispot	106° 47.017W	37° 43.15N
H-58	Helispot	107° 13.694W	37° 46.372N
H-59	Helispot	106° 44.617W	37° 43.096N
H-60	Helispot	106° 47.717W	37° 44.483N
H-62	Helispot	106° 59.663W	37° 43.138N
H-64	Helispot	106° 00.714W	37° 38.378N
ICP Del Norte	Incident Command Post	106° 20.85W	37° 40.442N
ICP Pagosa	Incident Command Post	106° 0.789W	37° 15.977N
MediVac Site	MediVac Site	106° 48.907W	37° 27.387N
MediVac Site	MediVac Site	106° 49.379W	37° 25.861N
SJF Pagosa Portable	Mobile Weather Unit	106° 48.023W	37° 29.457N
Blue Park RAWs	Mobile Weather Unit	106° 46.717W	37° 47.583N
IRAWs 13	Mobile Weather Unit	107° 3.37W	37° 47.673N
IRAWs 14	Mobile Weather Unit	107° 7.37W	37° 47.948N
IRAWs 15	Mobile Weather Unit	106° 33.345W	37° 49.471N
IRAWs 16	Mobile Weather Unit	106° 39.738W	37° 50.518N
IRAWs 17	Mobile Weather Unit	106° 35.048W	37° 41.782N
Aqua CMD	Repeater	106° 35.322W	37° 43.67N
CMD-1	Repeater	107° 3.411W	37° 47.649N
CMD-2	Repeater	106° 35.333W	37° 43.767N
CMD-3	Repeater	106° 34.202W	37° 27.745N
CMD-4	Repeater	107° 3.37W	37° 47.673N
Saddle Mt CMD	Repeater	106° 56.741W	37° 26.373N
Wolf Creek CMD	Repeater	106° 47.923W	37° 27.425N
Clear Retardant Dip	Retardant/Mud Pit	107° 9.234W	37° 51.339N
Elk Retardant Dip	Retardant/Mud Pit	106° 40.577W	37° 41.362N
Safety Zone	Safety Zone	106° 47.845W	37° 45.943N
Safety Zone	Safety Zone	106° 48.929W	37° 45.947N
Safety Zone	Safety Zone	106° 46.549W	37° 45.366N
Borns Dip	Water Source	106° 46.89W	37° 26.9N
Canyon Dip	Water Source	107° 10.676W	37° 46.438N
Divide Dip	Water Source	107° 20.37W	37° 35.95N
Escondido Hydrant	Water Source	106° 38.772W	37° 39.193N
Fill Station	Water Source	106° 41.123W	37° 42.038N
Hydro 1	Water Source	107° 16.588W	37° 43.327N
Hydro 2	Water Source	106° 51.319W	37° 41.048N
Hydro 3	Water Source	106° 46.89W	37° 26.9N
Hydro 4	Water Source	106° 41.308W	37° 41.958N
Jason's Dip	Water Source	107° 04.089W	37° 43.587N
Ladders Dip	Water Source	106° 48.889W	37° 24.618N
Lazy Dip	Water Source	107° 14.016W	37° 47.051N
Maria Dip	Water Source	107° 5.14W	37° 47.623N
Metroz Dip	Water Source	106° 44.94W	37° 36.901N
Million Dip	Water Source	106° 40.233W	37° 37.378N
Park Dip	Water Source	106° 46.042W	37° 28.094N
Powerline Dip	Water Source	107° 5.556W	37° 44.329N
Ranch Dip	Water Source	107° 12.123W	37° 47.717N
Red Dip	Water Source	106° 00.852W	37° 38.235N
Shaw Dip	Water Source	106° 47.69W	37° 33.781N
Water Shed	Water Source	106° 41.352W	37° 41.958N



Division	Branch	Zone Fence	Wilderness Boundary	FireLine	Retardant Avoid Areas	Drop Point	Incident Command Post	Repeater
Check Point	ROTOR WING	Completed Line	Powerlines - Distribution	Fire Origin	Retardant/Mud Pit	Fire Origin	MediVac Site	Water Source
FIXED WING	Camp	Div J/K line	Powerlines - Transmission	Helibase	Camp	Helibase	Mobile Weather Unit	

0 0.25 0.5 1 1.5 2 Miles
 KDH Date: 7/3/2013 Time: 10:49:38 PM
 Coordinate System: NAD 1983 UTM Zone 13N
 Projection: Transverse Mercator
 Datum: North American 1983
 False Easting: 500,000.0000
 False Northing: 0.0000
 Central Meridian: -105.0000
 Scale Factor: 0.9996
 Latitude Of Origin: 0.0000
 Units: Meter