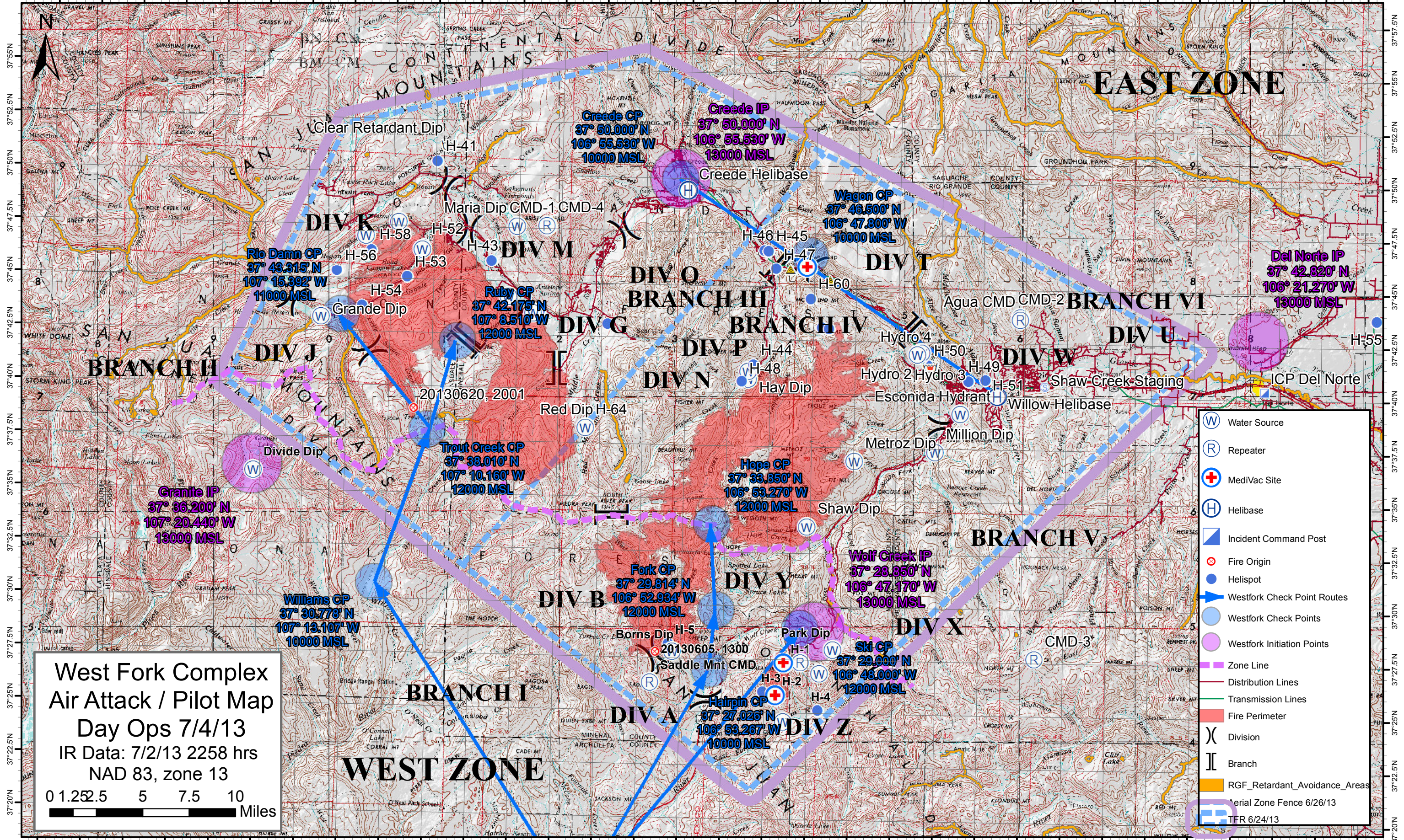


107°32.5'W 107°30'W 107°27.5'W 107°25'W 107°22.5'W 107°20'W 107°17.5'W 107°15'W 107°12.5'W 107°10'W 107°7.5'W 107°5'W 107°2.5'W 107°0'W 106°57.5'W 106°55'W 106°52.5'W 106°50'W 106°47.5'W 106°45'W 106°42.5'W 106°40'W 106°37.5'W 106°35'W 106°32.5'W 106°30'W 106°27.5'W 106°25'W 106°22.5'W 106°20'W 106°17.5'W 106°15'W



- (W) Water Source
- (R) Repeater
- (+) MediVac Site
- (H) Helibase
- (I) Incident Command Post
- (*) Fire Origin
- (●) Helispot
- (●) Westfork Check Points
- (●) Westfork Initiation Points
- (---) Zone Line
- (---) Distribution Lines
- (---) Transmission Lines
- (---) Fire Perimeter
- (X) Division
- (||) Branch
- (---) RGF_Retardant_Avoidance_Areas
- (---) Aerial Zone Fence 6/26/13
- (---) TFR 6/24/13

**West Fork Complex
Air Attack / Pilot Map**
Day Ops 7/4/13
IR Data: 7/2/13 2258 hrs
NAD 83, zone 13

0 1.25 2.5 5 7.5 10
Miles