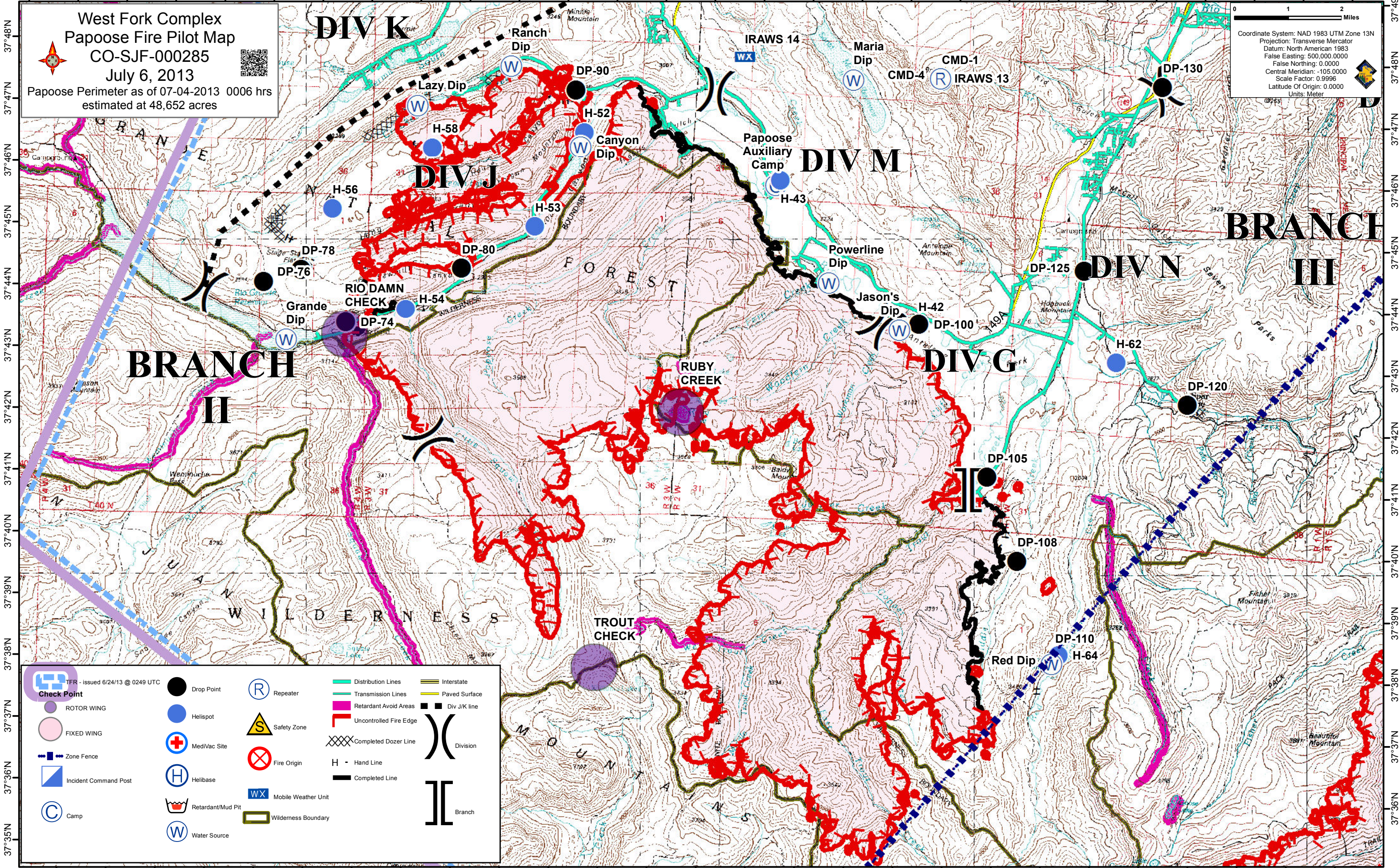


107°22'W 107°21'W 107°20'W 107°19'W 107°18'W 107°17'W 107°16'W 107°15'W 107°14'W 107°13'W 107°12'W 107°11'W 107°10'W 107°9'W 107°8'W 107°7'W 107°6'W 107°5'W 107°4'W 107°3'W 107°2'W 107°1'W 107°0'W 106°59'W 106°58'W 106°57'W 106°56'W 106°55'W

West Fork Complex
Papoose Fire Pilot Map
CO-SJF-000285
July 6, 2013
Papoose Perimeter as of 07-04-2013 0006 hrs
estimated at 48,652 acres

0 1 2 Miles
Coordinate System: NAD 1983 UTM Zone 13N
Projection: Transverse Mercator
Datum: North American 1983
False Easting: 500,000.0000
False Northing: 0.0000
Central Meridian: -105.0000
Scale Factor: 0.9996
Latitude Of Origin: 0.0000
Units: Meter



	TFR - issued 6/24/13 @ 0249 UTC		Drop Point		Repeater		Distribution Lines		Interstate
	ROTOR WING		Helispot		Safety Zone		Transmission Lines		Paved Surface
	FIXED WING		MediVac Site		Fire Origin		Retardant Avoid Areas		Div J/K line
	Zone Fence		Helibase		Completed Dozer Line		Uncontrolled Fire Edge		Division
	Incident Command Post		Retardant/Mud Pit		Completed Line		Wilderness Boundary		Branch
	Camp		Mobile Weather Unit						
	Water Source								

107°21'W 107°20'W 107°19'W 107°18'W 107°17'W 107°16'W 107°15'W 107°14'W 107°13'W 107°12'W 107°11'W 107°10'W 107°9'W 107°8'W 107°7'W 107°6'W 107°5'W 107°4'W 107°3'W 107°2'W 107°1'W 107°0'W 106°59'W 106°58'W 106°57'W 106°56'W 106°55'W