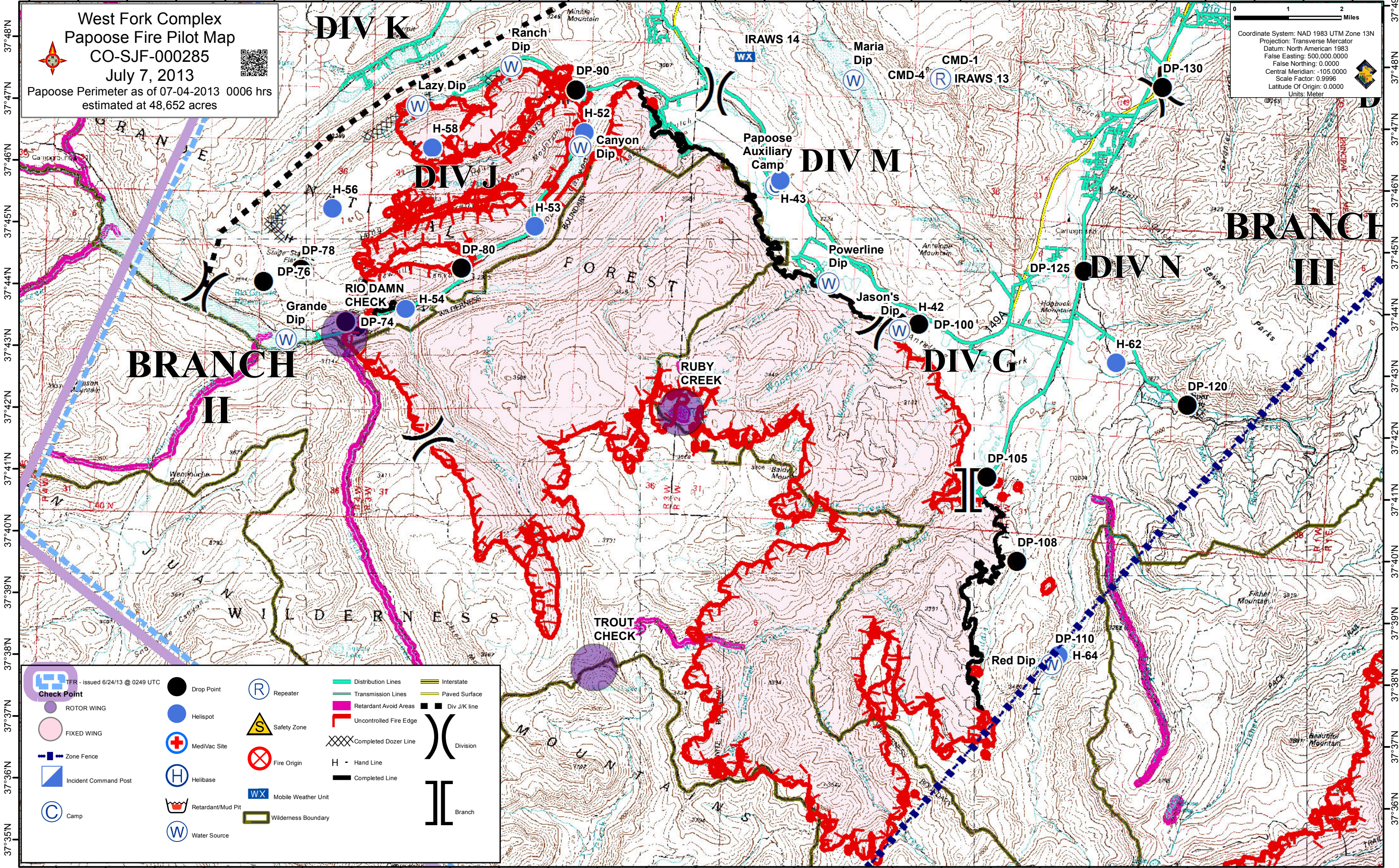


107°22'W 107°21'W 107°20'W 107°19'W 107°18'W 107°17'W 107°16'W 107°15'W 107°14'W 107°13'W 107°12'W 107°11'W 107°10'W 107°9'W 107°8'W 107°7'W 107°6'W 107°5'W 107°4'W 107°3'W 107°2'W 107°1'W 107°0'W 106°59'W 106°58'W 106°57'W 106°56'W 106°55'W

West Fork Complex
Papoose Fire Pilot Map
CO-SJF-000285
July 7, 2013
Papoose Perimeter as of 07-04-2013 0006 hrs
estimated at 48,652 acres

0 1 2 Miles
Coordinate System: NAD 1983 UTM Zone 13N
Projection: Transverse Mercator
Datum: North American 1983
False Easting: 500,000.0000
False Northing: 0.0000
Central Meridian: -105.0000
Scale Factor: 0.9996
Latitude Of Origin: 0.0000
Units: Meter



| | | | | |
|-----------------------|-------------------|----------------------|------------------------|---------------|
| Check Point | Drop Point | Repeater | Distribution Lines | Interstate |
| ROTOR WING | Helispot | Safety Zone | Transmission Lines | Paved Surface |
| FIXED WING | MediVac Site | Fire Origin | Retardant Avoid Areas | Div J/K line |
| Zone Fence | Helibase | Completed Dozer Line | Uncontrolled Fire Edge | Division |
| Incident Command Post | Retardant/Mud Pit | Completed Line | Mobile Weather Unit | Branch |
| Camp | Water Source | Wilderness Boundary | | |

107°21'W 107°20'W 107°19'W 107°18'W 107°17'W 107°16'W 107°15'W 107°14'W 107°13'W 107°12'W 107°11'W 107°10'W 107°9'W 107°8'W 107°7'W 107°6'W 107°5'W 107°4'W 107°3'W 107°2'W 107°1'W 107°0'W 106°59'W 106°58'W 106°57'W 106°56'W 106°55'W