

West Fork Complex: West Fork Fire Pilot Map

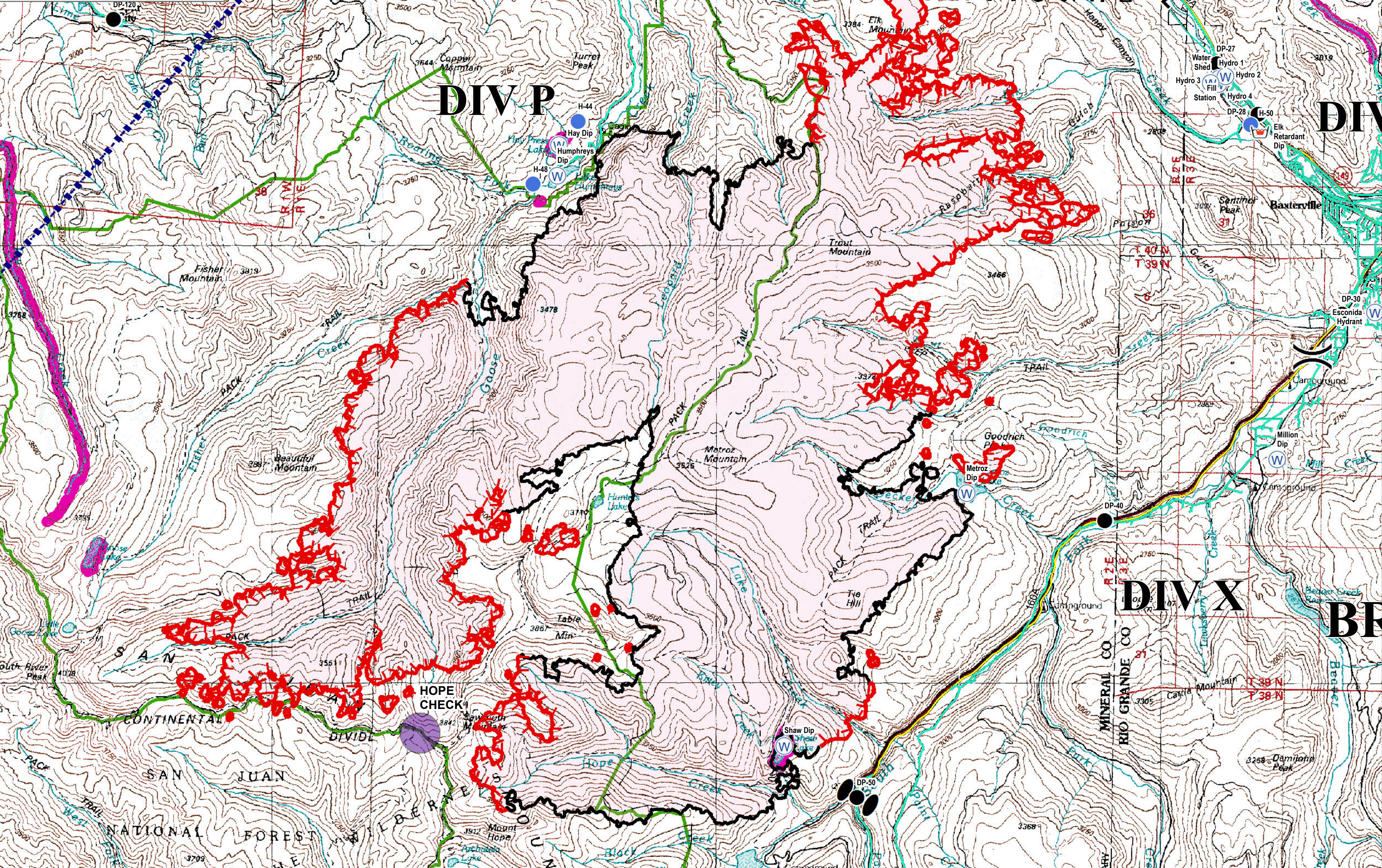
CO-SJF-000285

July 7, 2013

West Fork Perimeter as of 07-04-2013 0006 hrs
Estimated 87,896 ac



| Label | Type | Long | Lat |
|------------------------|-----------------------|---------------|-------------|
| Blue Creek Lodge Spike | Camp | 106° 47.8111W | 37° 46.191N |
| Broose Auxiliary | Camp | 107° 4.6151W | 37° 45.888N |
| South Fork Spike | Camp | 106° 33.8151W | 37° 40.551N |
| West Fork Spike | Camp | 106° 54.0921W | 37° 26.663N |
| Creede Check | Check Point | 106° 55.5301W | 37° 50.000N |
| Creede IP | Check Point | 106° 55.5301W | 37° 50.000N |
| Dal Norte IP | Check Point | 106° 21.2701W | 37° 42.820N |
| Fork Check | Check Point | 106° 52.5341W | 37° 29.814N |
| Gamma IP | Check Point | 106° 53.2671W | 37° 27.026N |
| Haron Check | Check Point | 106° 53.2671W | 37° 27.026N |
| Hope Check | Check Point | 106° 53.2701W | 37° 33.850N |
| Rio Dam Check | Check Point | 107° 15.3921W | 37° 43.315N |
| Ruby Check | Check Point | 107° 08.5101W | 37° 42.175N |
| Sk Check | Check Point | 106° 48.0001W | 37° 29.000N |
| Wolf Check | Check Point | 107° 10.5001W | 37° 30.000N |
| Wagon Check | Check Point | 106° 47.8001W | 37° 46.500N |
| Williams Check | Check Point | 107° 13.1071W | 37° 30.778N |
| Wolf Creek IP | Check Point | 106° 47.1701W | 37° 28.850N |
| DP-1 | Drop Point | 106° 48.9071W | 37° 27.387N |
| DP-2 | Drop Point | 106° 47.5971W | 37° 28.365N |
| DP-3 | Drop Point | 106° 50.0671W | 37° 29.117N |
| DP-4 | Drop Point | 106° 46.5301W | 37° 25.161N |
| DP-20 | Drop Point | 106° 49.7151W | 37° 46.027N |
| DP-21 | Drop Point | 106° 48.1271W | 37° 46.025N |
| DP-22 | Drop Point | 106° 44.2321W | 37° 44.175N |
| DP-25 | Drop Point | 106° 43.7181W | 37° 44.011N |
| DP-26 | Drop Point | 106° 43.0421W | 37° 43.676N |
| DP-27 | Drop Point | 106° 41.2631W | 37° 44.191N |
| DP-28 | Drop Point | 106° 40.1331W | 37° 43.587N |
| DP-29 | Drop Point | 106° 38.4281W | 37° 40.872N |
| DP-30 | Drop Point | 106° 39.2771W | 37° 39.169N |
| DP-40 | Drop Point | 106° 42.8511W | 37° 36.597N |
| DP-50 | Drop Point | 106° 46.5651W | 37° 33.171N |
| DP-74 | Drop Point | 107° 15.3761W | 37° 43.511N |
| DP-76 | Drop Point | 107° 17.0711W | 37° 44.132N |
| DP-78 | Drop Point | 107° 16.3941W | 37° 43.428N |
| DP-80 | Drop Point | 107° 13.0381W | 37° 44.426N |
| DP-90 | Drop Point | 107° 10.1951W | 37° 47.358N |
| DP-92 | Drop Point | 107° 8.9171W | 37° 50.902N |
| DP-93 | Drop Point | 107° 12.2851W | 37° 53.315N |
| DP-94 | Drop Point | 107° 10.5911W | 37° 53.472N |
| DP-96 | Drop Point | 107° 9.7231W | 37° 55.863N |
| DP-100 | Drop Point | 107° 3.7091W | 37° 43.667N |
| DP-106 | Drop Point | 107° 2.2351W | 37° 41.232N |
| DP-108 | Drop Point | 107° 1.5941W | 37° 39.875N |
| DP-110 | Drop Point | 107° 0.7821W | 37° 38.341N |
| DP-120 | Drop Point | 106° 58.191W | 37° 42.468N |
| DP-125 | Drop Point | 107° 0.3481W | 37° 44.676N |
| DP-130 | Drop Point | 106° 58.6591W | 37° 47.812N |
| DP-140 | Drop Point | 106° 54.2911W | 37° 45.867N |
| DP-160 | Drop Point | 106° 50.4951W | 37° 46.658N |
| Helibase | Helibase | 107° 0.8451W | 37° 16.028N |
| Creede Helibase | Helibase | 106° 55.0841W | 37° 49.454N |
| Willow Helibase | Helibase | 106° 36.6171W | 37° 40.056N |
| H-1 | Helispot | 106° 48.9071W | 37° 27.387N |
| H-2 | Helispot | 106° 49.3791W | 37° 26.861N |
| H-3 | Helispot | 106° 50.1411W | 37° 26.018N |
| H-4 | Helispot | 106° 46.8691W | 37° 25.193N |
| H-5 | Helispot | 106° 55.7191W | 37° 28.207N |
| H-41 | Helispot | 107° 9.9161W | 37° 50.578N |
| H-42 | Helispot | 107° 3.7091W | 37° 43.667N |
| H-43 | Helispot | 107° 6.5841W | 37° 45.969N |
| H-44 | Helispot | 106° 51.0331W | 37° 43.326N |
| H-45 | Helispot | 106° 50.2671W | 37° 46.684N |
| H-46 | Helispot | 106° 50.5051W | 37° 46.722N |
| H-47 | Helispot | 106° 49.871W | 37° 45.878N |
| H-48 | Helispot | 106° 51.6881W | 37° 40.565N |
| H-49 | Helispot | 106° 38.3471W | 37° 40.742N |
| H-50 | Helispot | 106° 40.7241W | 37° 41.459N |
| H-51 | Helispot | 106° 37.3451W | 37° 40.838N |
| H-52 | Helispot | 107° 10.6051W | 37° 46.686N |
| H-53 | Helispot | 107° 11.5651W | 37° 45.135N |
| H-54 | Helispot | 107° 14.1611W | 37° 43.748N |
| H-55 | Helispot | 106° 14.2991W | 37° 43.676N |
| H-56 | Helispot | 107° 15.7051W | 37° 45.351N |
| H-57 | Helispot | 106° 47.0171W | 37° 43.151N |
| H-58 | Helispot | 107° 13.5841W | 37° 46.372N |
| H-59 | Helispot | 106° 46.6171W | 37° 43.095N |
| H-60 | Helispot | 106° 47.7171W | 37° 44.483N |
| H-62 | Helispot | 106° 59.6631W | 37° 43.138N |
| H-64 | Helispot | 106° 00.7141W | 37° 38.378N |
| ICP Del Norte | Incident Command Post | 106° 20.851W | 37° 40.442N |
| ICP Pagosa | Incident Command Post | 107° 0.7891W | 37° 15.977N |
| Med/Vac Site | Med/Vac Site | 106° 47.8651W | 37° 45.971N |
| Med/Vac Site | Med/Vac Site | 106° 48.9071W | 37° 27.387N |
| Med/Vac Site | Med/Vac Site | 106° 49.3791W | 37° 26.861N |
| SJF2 Pagosa Portable | Mobile Weather Unit | 106° 48.0231W | 37° 29.457N |
| Blue Park RAWS | Mobile Weather Unit | 106° 46.7171W | 37° 47.583N |
| IRAWS 13 | Mobile Weather Unit | 107° 3.371W | 37° 47.673N |
| IRAWS 14 | Mobile Weather Unit | 107° 3.371W | 37° 47.673N |
| IRAWS 15 | Mobile Weather Unit | 106° 33.3451W | 37° 48.452N |
| IRAWS 16 | Mobile Weather Unit | 106° 39.7381W | 37° 50.518N |
| IRAWS 17 | Mobile Weather Unit | 106° 35.0481W | 37° 41.782N |
| Agua CMD | Repeater | 106° 35.3221W | 37° 43.676N |
| CMD-1 | Repeater | 107° 3.3411W | 37° 47.649N |
| CMD-2 | Repeater | 106° 35.3331W | 37° 43.767N |
| CMD-3 | Repeater | 106° 34.2021W | 37° 27.748N |
| CMD-4 | Repeater | 107° 3.371W | 37° 47.673N |
| Saddle Mt CMD | Repeater | 106° 56.7411W | 37° 26.373N |
| Wolf Creek CMD | Repeater | 106° 47.9231W | 37° 27.425N |
| Clear Retardant Dip | Retardant/Mud Pit | 107° 9.2341W | 37° 51.339N |
| Elk Retardant Dip | Retardant/Mud Pit | 106° 40.5771W | 37° 41.362N |
| Safety Zone | Safety Zone | 106° 47.8451W | 37° 45.943N |
| Safety Zone | Safety Zone | 106° 48.2891W | 37° 45.867N |
| Safety Zone | Safety Zone | 106° 46.5491W | 37° 45.365N |
| Borns Dip | Water Source | 106° 55.4621W | 37° 27.836N |
| Canyon Dip | Water Source | 107° 10.6761W | 37° 46.438N |
| Divide Dip | Water Source | 107° 20.371W | 37° 35.951N |
| Escondida Hydrant | Water Source | 106° 38.7721W | 37° 39.193N |
| Fill Station | Water Source | 106° 41.1231W | 37° 42.036N |
| Wanda Dip | Water Source | 107° 16.5841W | 37° 43.203N |
| Hay Dip | Water Source | 106° 51.3191W | 37° 41.049N |
| High Dip | Water Source | 106° 46.871W | 37° 26.971N |
| Humphreys Dip | Water Source | 106° 51.3311W | 37° 40.672N |
| Hydro 1 | Water Source | 106° 41.2221W | 37° 42.008N |
| Hydro 2 | Water Source | 106° 41.1561W | 37° 42.018N |
| Hydro 3 | Water Source | 106° 41.3081W | 37° 41.959N |
| Hydro 4 | Water Source | 106° 41.2311W | 37° 41.943N |
| Jason's Dip | Water Source | 107° 04.0891W | 37° 43.587N |
| Ladders Dip | Water Source | 106° 48.8891W | 37° 24.618N |
| Lazy Dip | Water Source | 107° 14.0161W | 37° 47.051N |
| Maria Dip | Water Source | 107° 5.1471W | 37° 47.623N |
| Metroz Dip | Water Source | 106° 44.9741W | 37° 36.901N |
| Million Dip | Water Source | 106° 40.2231W | 37° 37.378N |
| Paro Dip | Water Source | 106° 46.0421W | 37° 28.049N |
| Powerline Dip | Water Source | 107° 5.5561W | 37° 44.329N |
| Ranch Dip | Water Source | 107° 12.1231W | 37° 47.717N |
| Red Dip | Water Source | 107° 00.8521W | 37° 38.235N |
| Shaw Dip | Water Source | 106° 47.6991W | 37° 33.781N |
| Water Shed | Water Source | 106° 41.3521W | 37° 41.958N |



Zone Fence

- Zone
- Branch
- Wilderness Boundary

Check Point

- ROTOR WING
- FIXED WING

FireLine

- Uncontrolled Fire Edge
- Completed Line
- Div J/K line
- Powerlines - Distribution
- Powerlines - Transmission
- Interstate
- Paved Surface

- Retardant Avoid Areas
- Drop Point
- Incident Command Post
- Repeater
- Helispot
- Fire Origin
- MediVac Site
- Water Source
- Retardant/Mud Pit
- Camp
- Helibase
- Mobile Weather Unit

0 0.25 0.5 1 1.5 2 Miles

KDH Date: 7/6/2013 Time: 8:43:42 PM
 Coordinate System: NAD 1983 UTM Zone 13N
 Projection: Transverse Mercator
 Datum: North American 1983
 False Easting: 500,000.0000
 False Northing: 0.0000
 Central Meridian: -105.0000
 Scale Factor: 0.9996
 Latitude Of Origin: 0.0000
 Units: Meter