

106°58'W

106°56'W

106°54'W

106°52'W

37°28'N

37°28'N

37°26'N

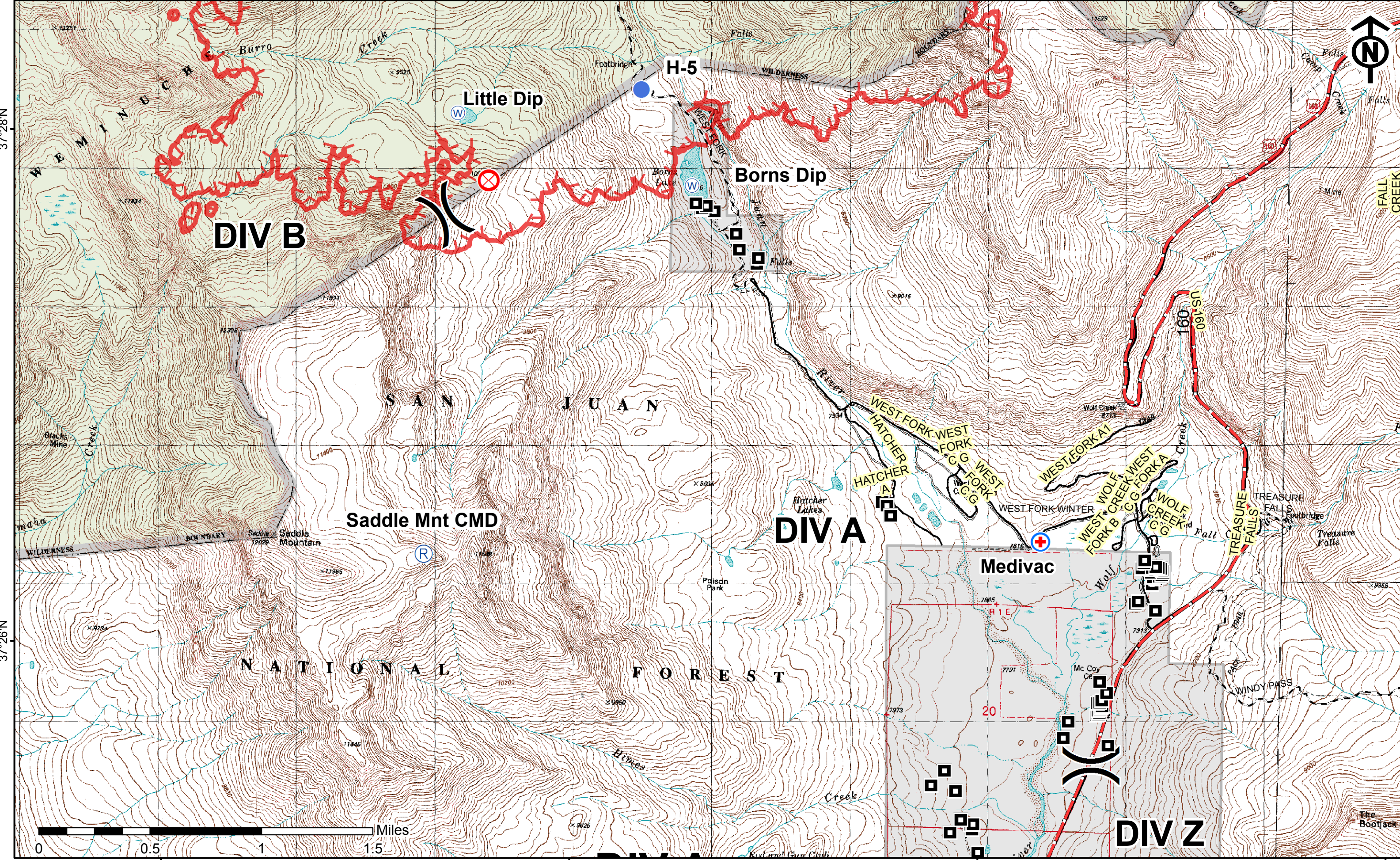
37°26'N

106°58'W

106°56'W

106°54'W

106°52'W



**DIV B**

Little Dip

H-5

Borns Dip

Saddle Mnt CMD

**DIV A**

Medivac

**DIV Z**

106°52'W

106°50'W

106°48'W

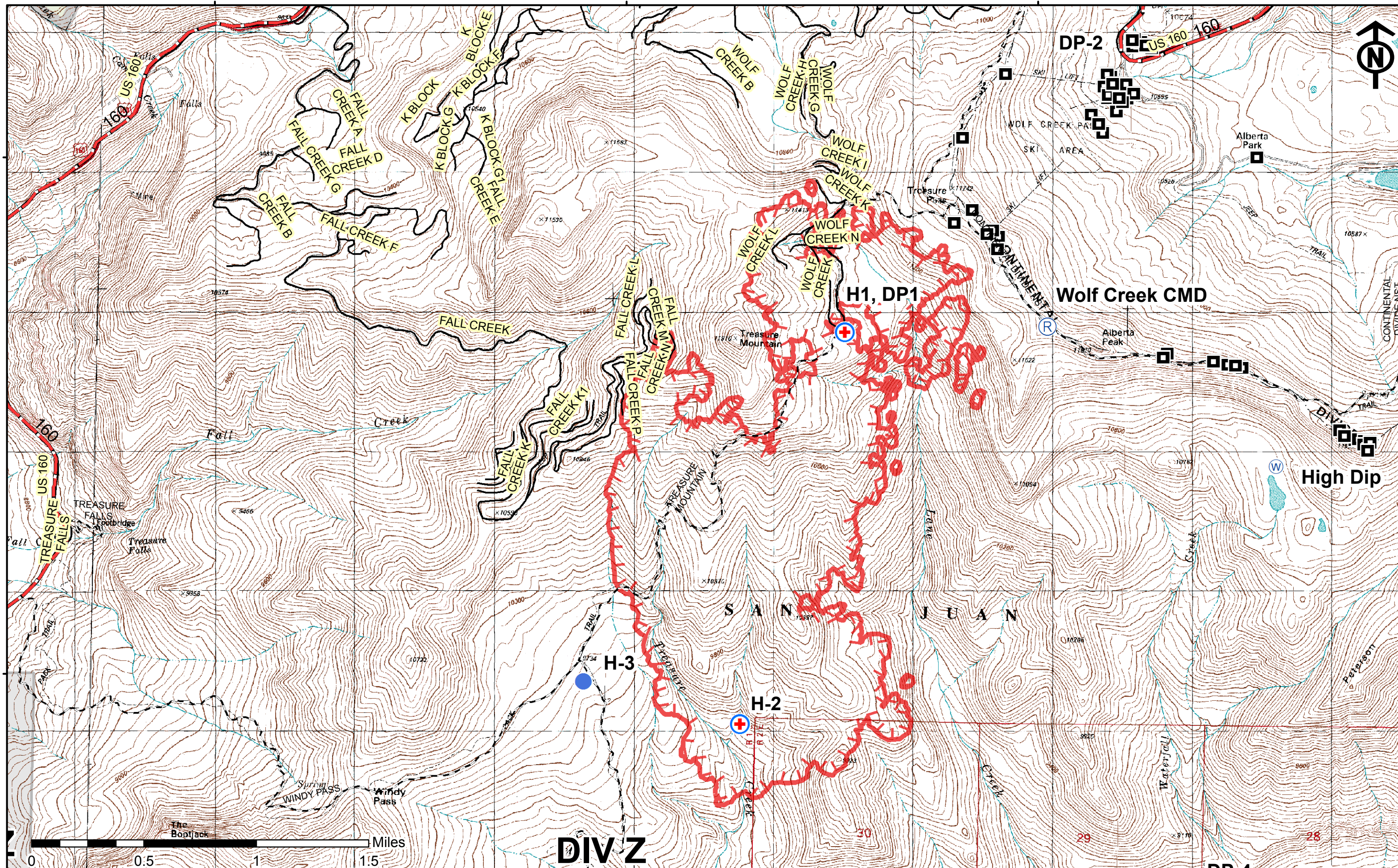


37°28'N

37°28'N

37°26'N

37°26'N



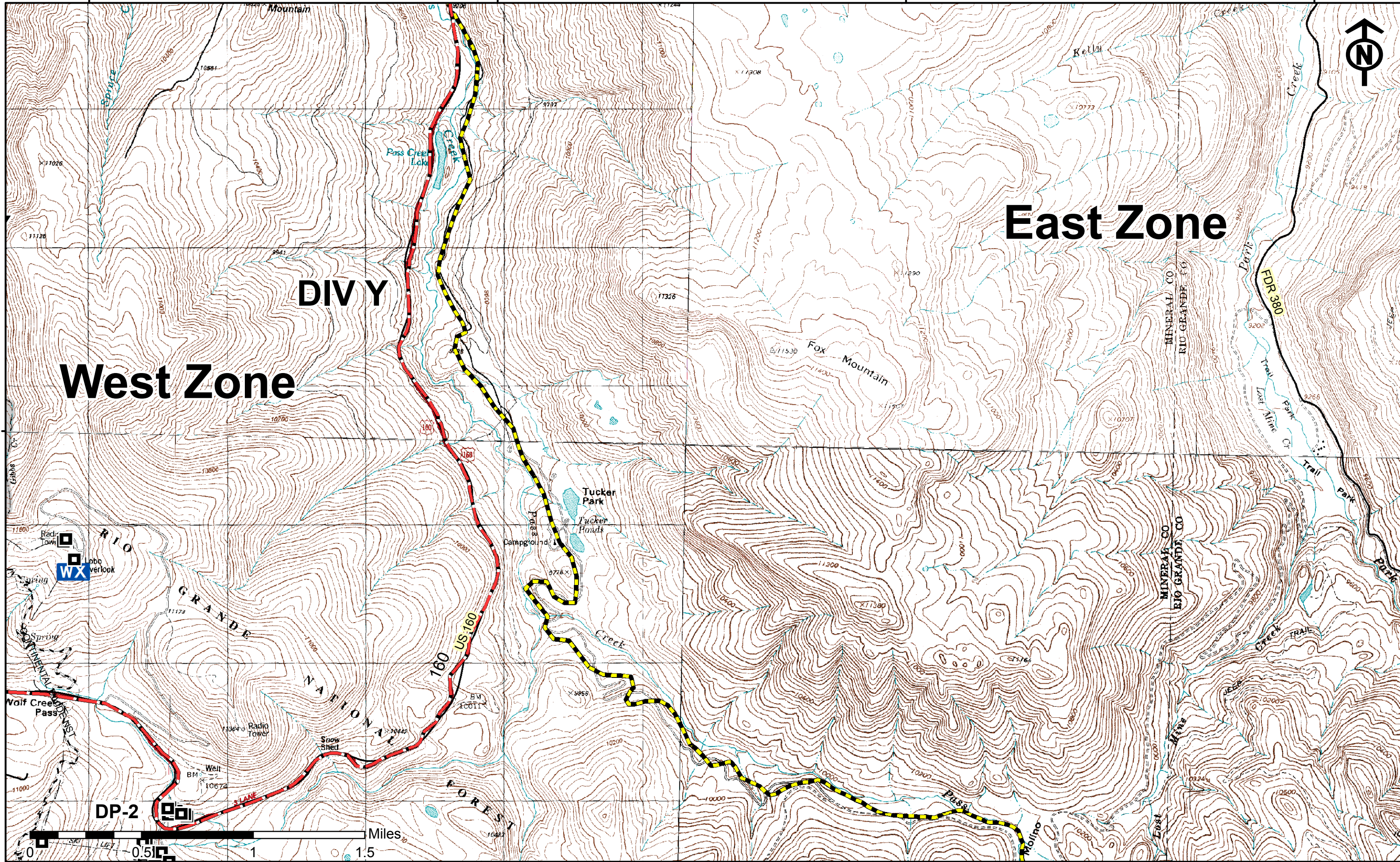
106°52'W

106°50'W

106°48'W

**DIV Z**





West Zone

DIVY

East Zone

DP-2

Miles

106°54'W

106°52'W

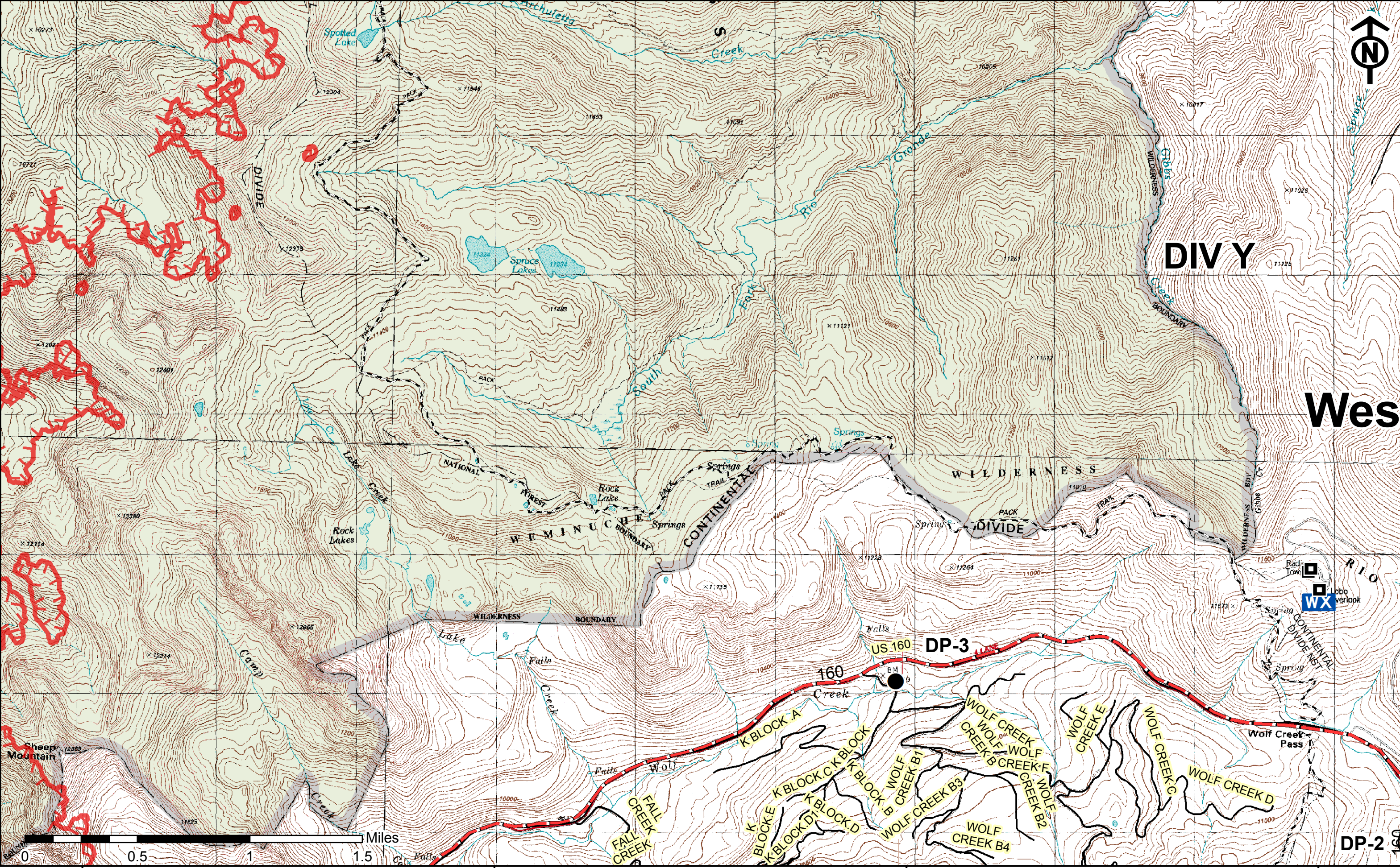
106°50'W

106°48'W



37°30'N

37°30'N



DIVY

West

WILDERNESS

WEMINUCHE

CONTINENTAL

DP-3

DP-2



106°54'W

106°52'W

106°50'W

106°48'W

106°60'W

106°58'W

106°56'W

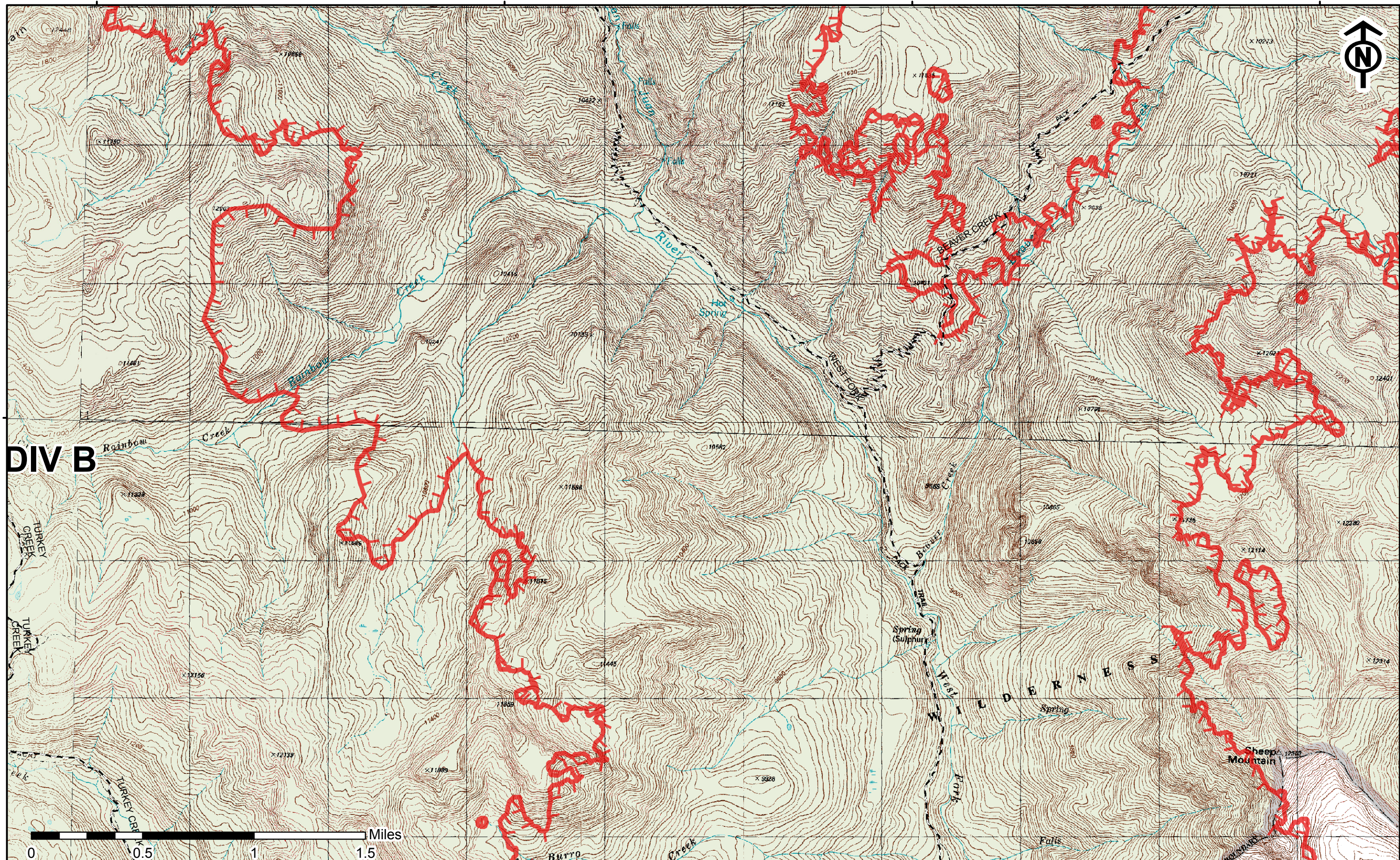
106°54'W



37°30'N

37°30'N

**DIV B**



106°60'W

106°58'W

106°56'W

106°54'W

107°2'W

106°60'W

106°58'W

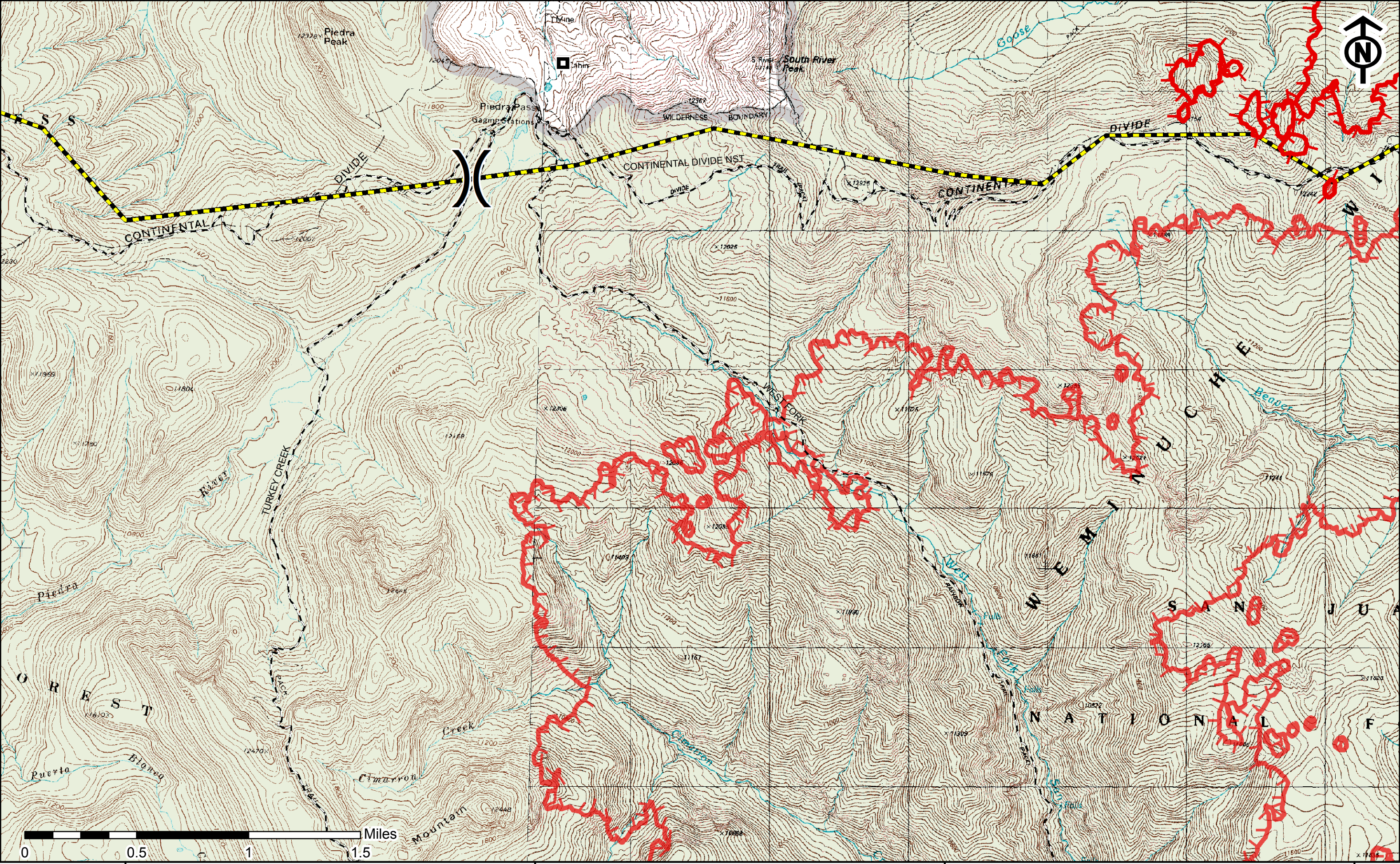
106°56'W

37°34'N

37°34'N

37°32'N

37°32'N



107°2'W

107°0'W

106°58'W

106°56'W

Produced on: 7/8/2013 9:18:32 PM

106°56'W

106°54'W

106°52'W

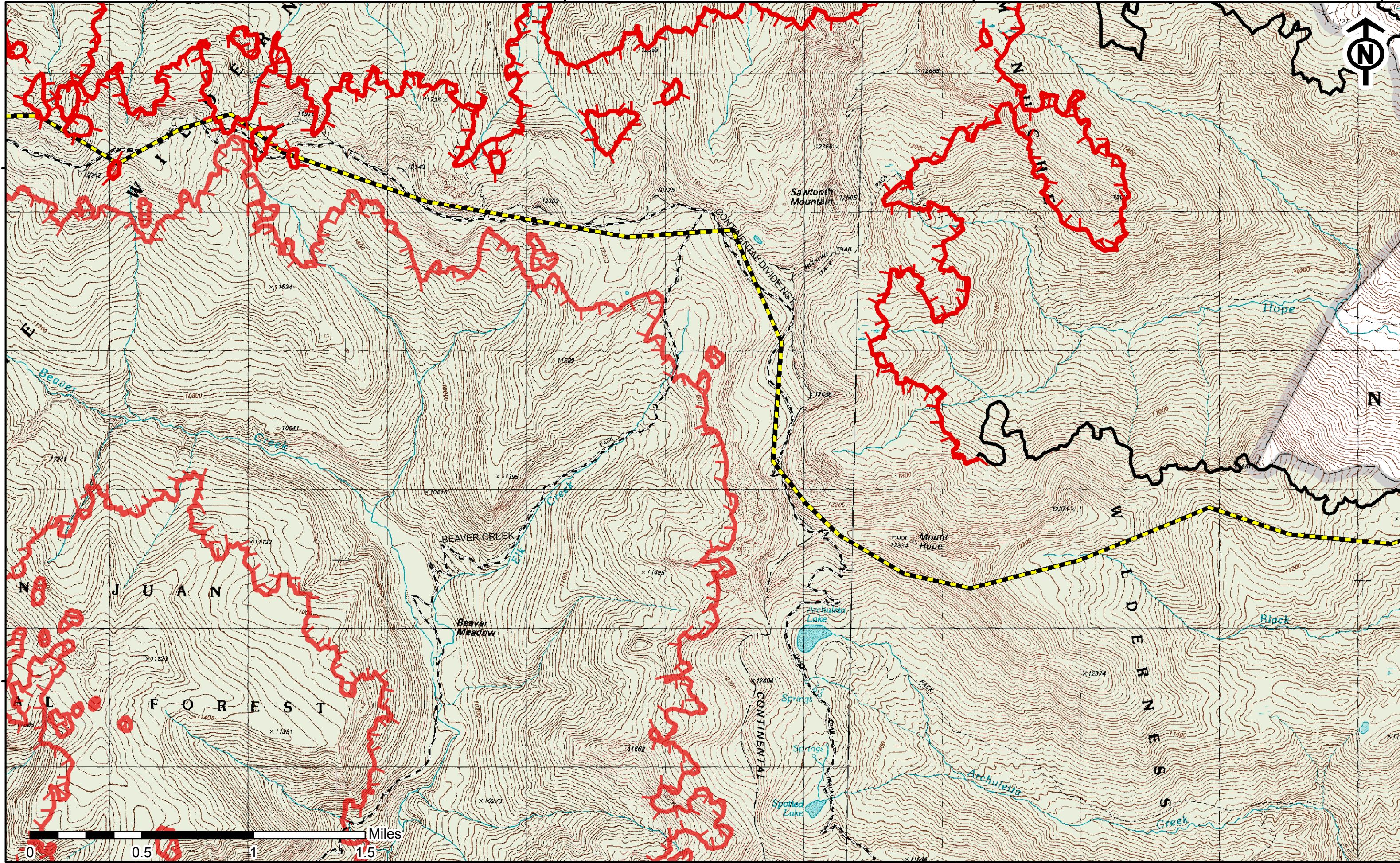
106°50'W

37°34'N

37°34'N

37°32'N

37°32'N



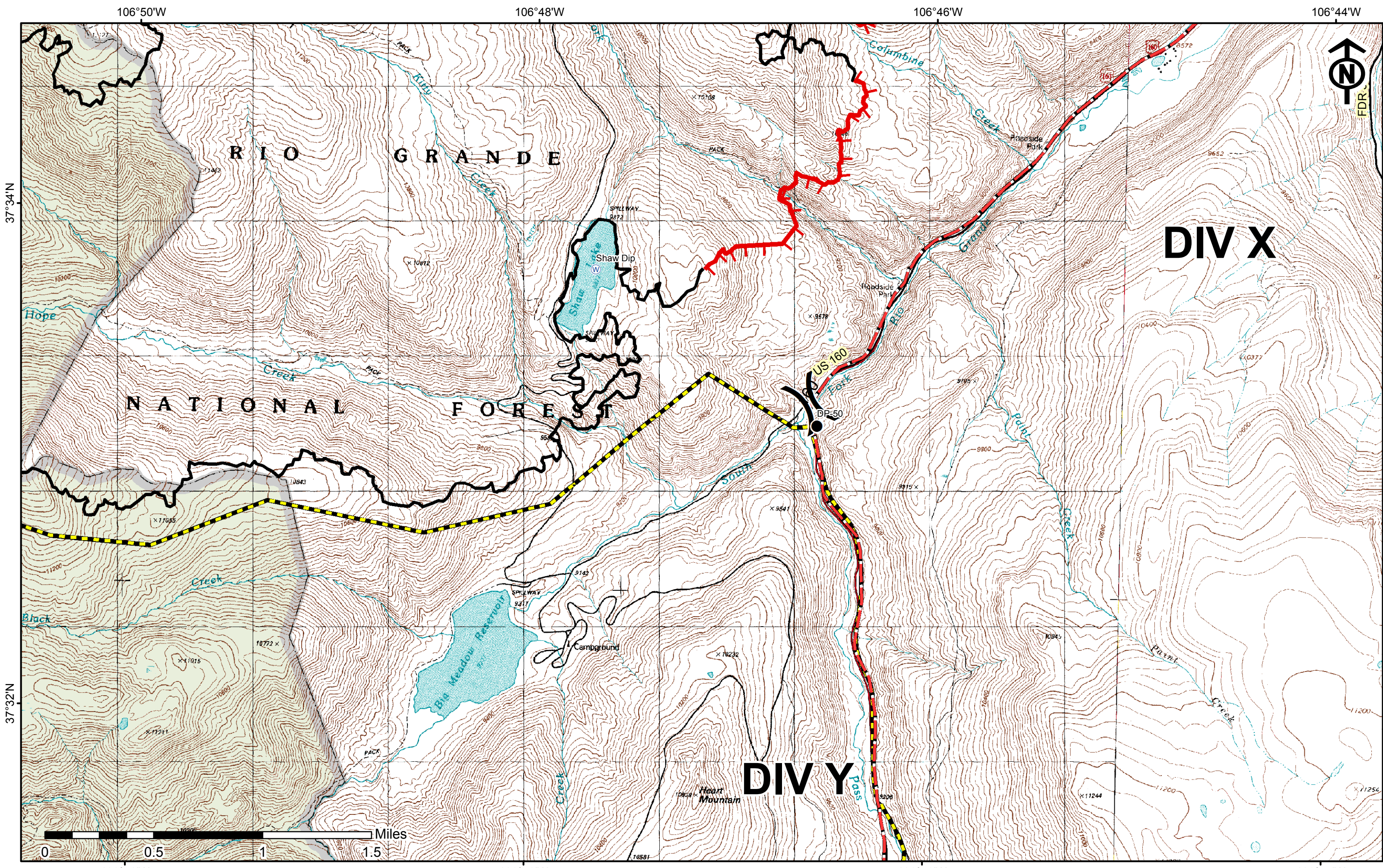
106°56'W

106°54'W

106°52'W

106°50'W





106°50'W

106°48'W

106°46'W

106°44'W

37°34'N

37°34'N

37°32'N

37°32'N

106°50'W

106°48'W

106°46'W

106°44'W

Produced on: 7/8/2013 9:20:18 PM

107°4'W

107°2'W

107°0'W

106°58'W

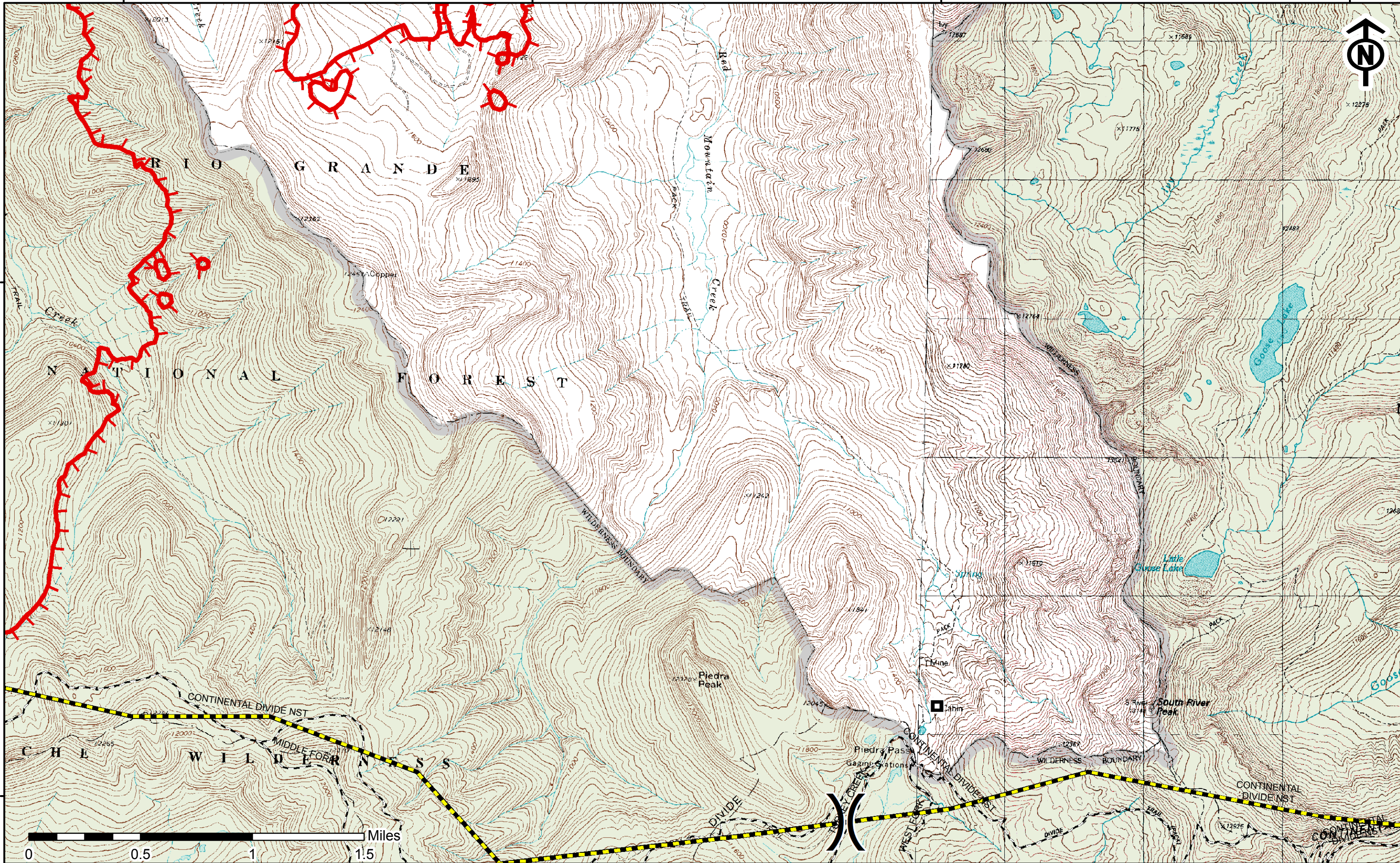


37°36'N

37°36'N

37°34'N

37°34'N



107°4'W

107°2'W

107°0'W

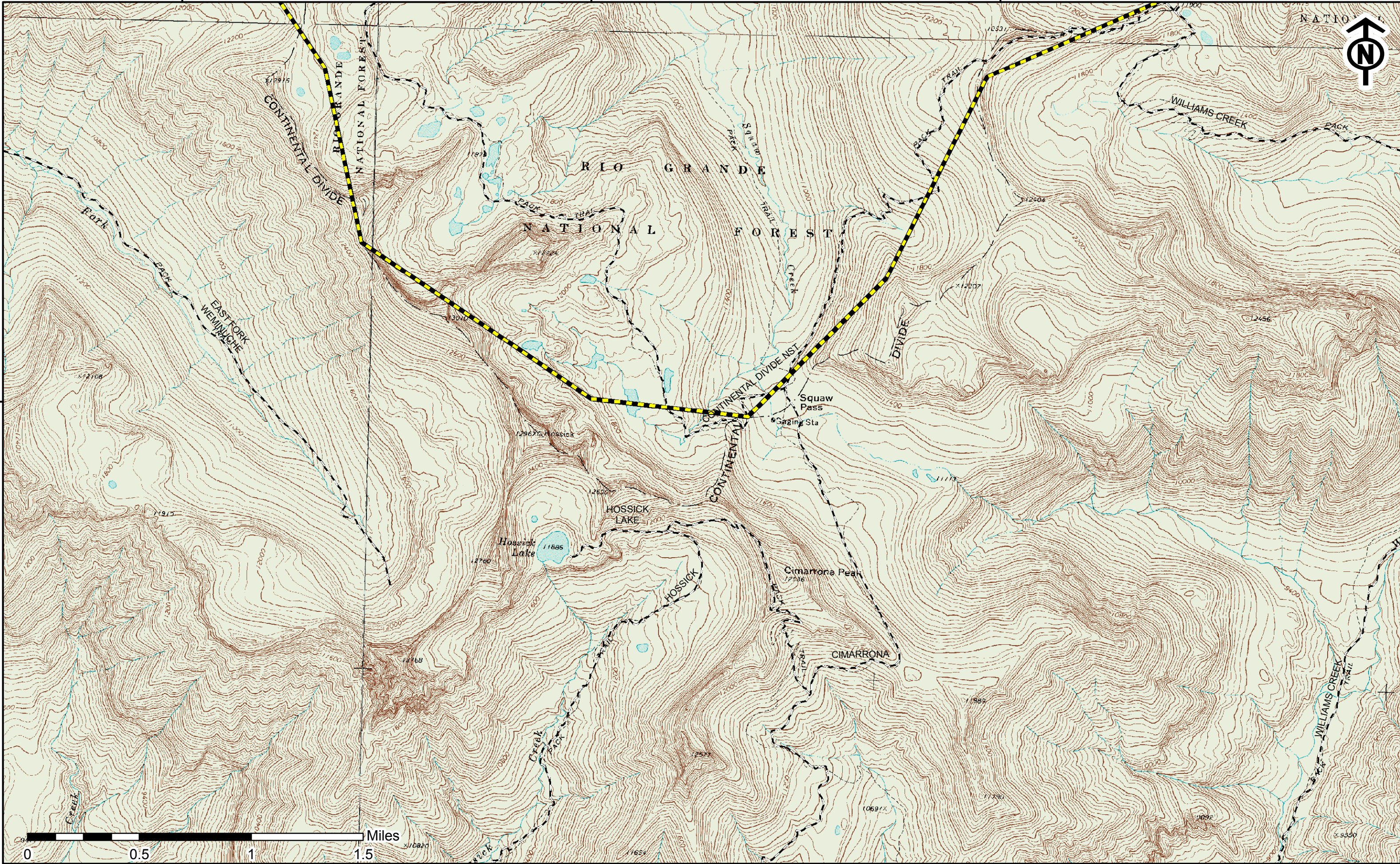
106°58'W



107°16'W

107°14'W

107°12'W



37°36'N

37°36'N

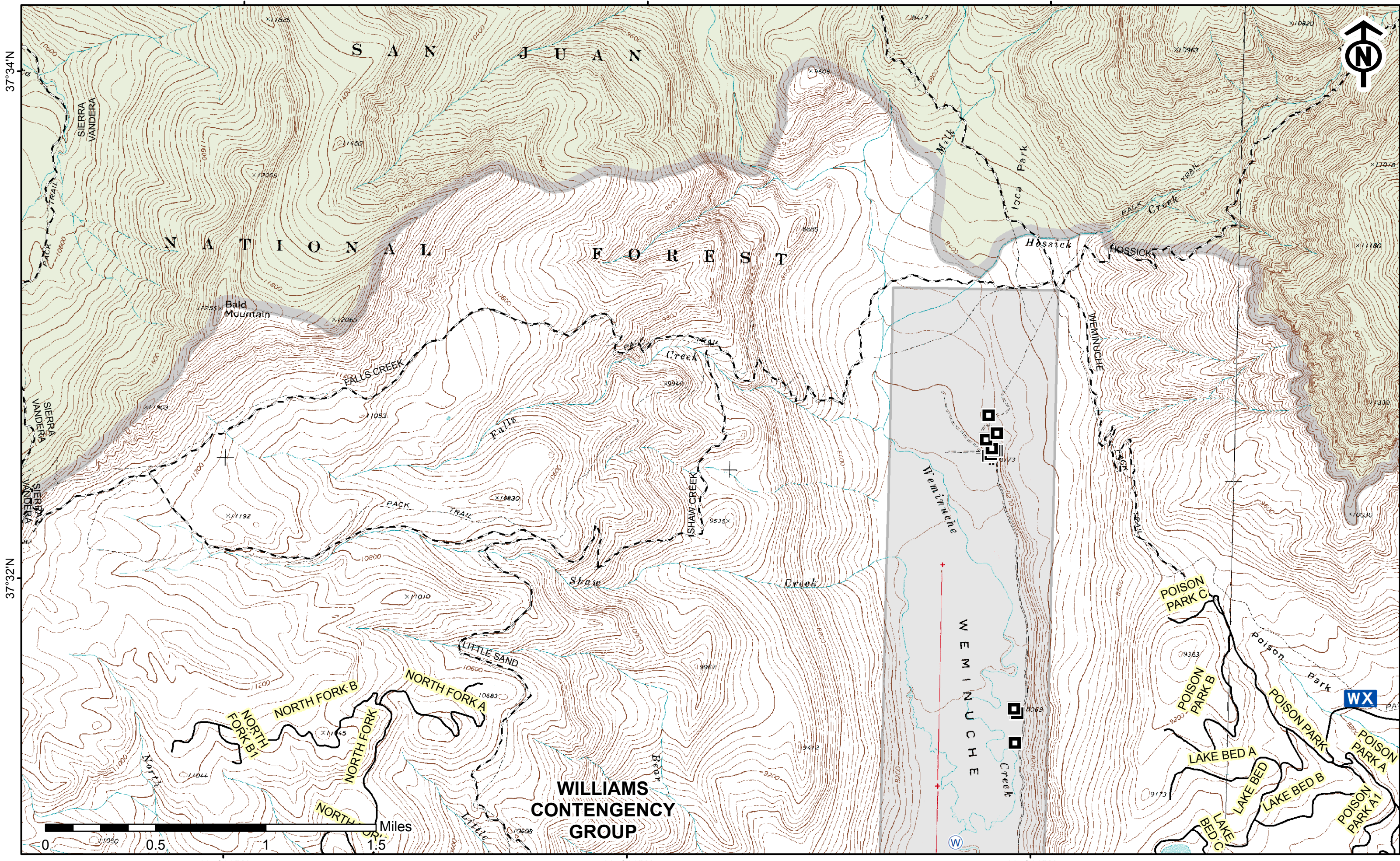


107°16'W

107°14'W

107°12'W

107°10'W



107°14'W

107°12'W

107°10'W



37°34'N

37°34'N

37°32'N

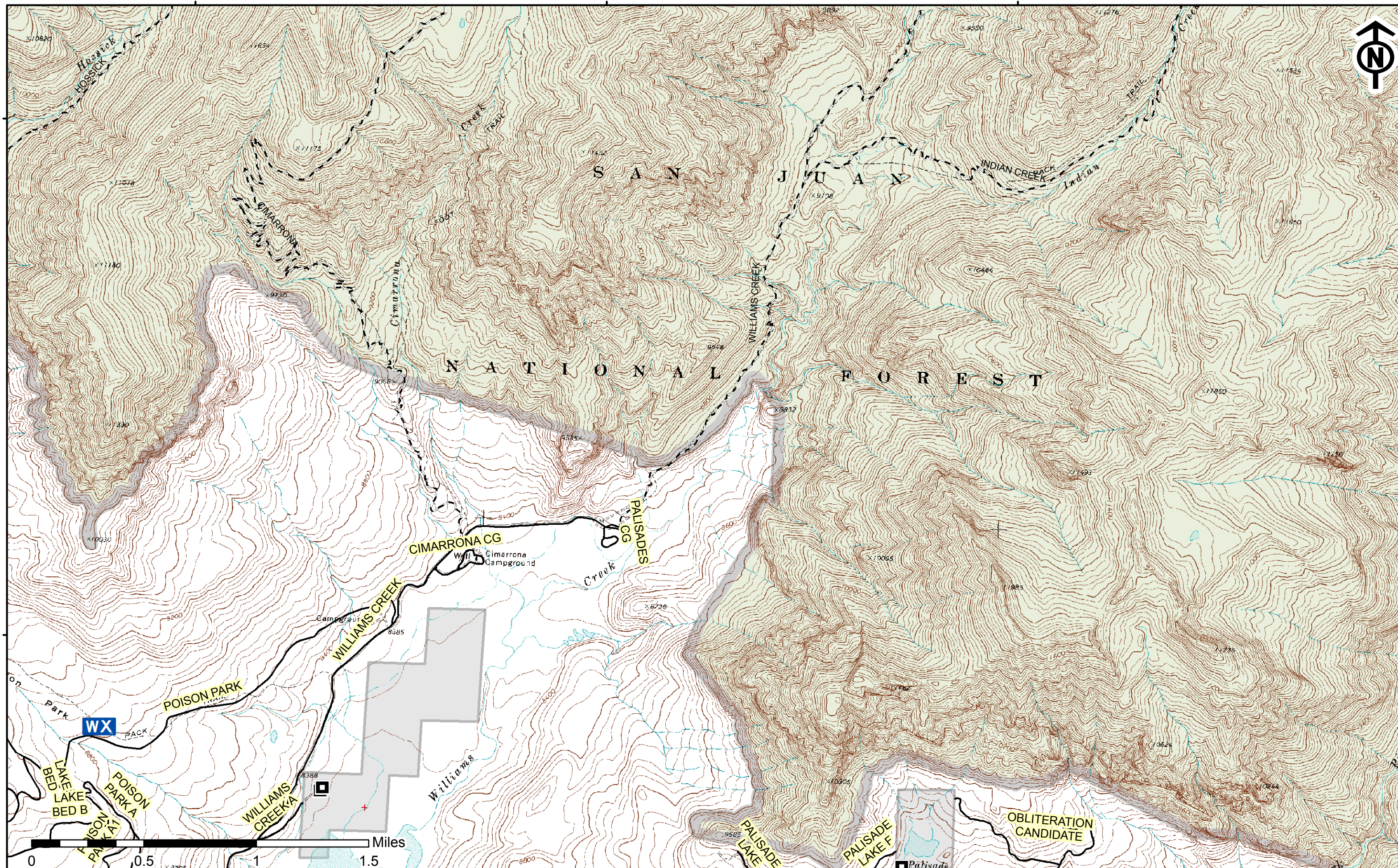
37°32'N

107°14'W

107°12'W

107°10'W

107°8'W



107°8'W

107°6'W

107°4'W

107°2'W

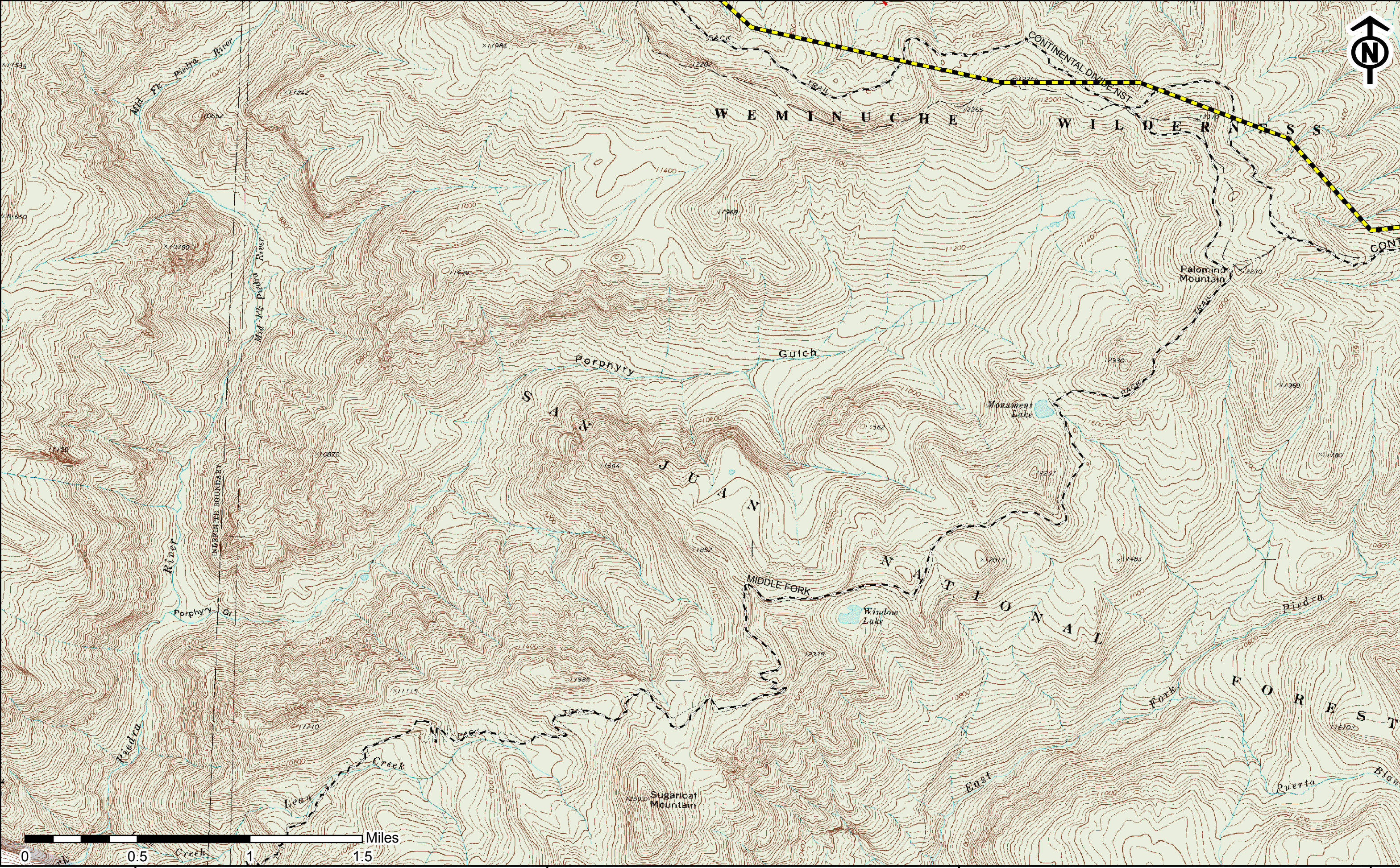


37°34'N

37°34'N

37°32'N

37°32'N



107°8'W

107°6'W

107°4'W

107°2'W

Produced on: 7/8/2013 9:25:05 PM

107°6'W

107°4'W

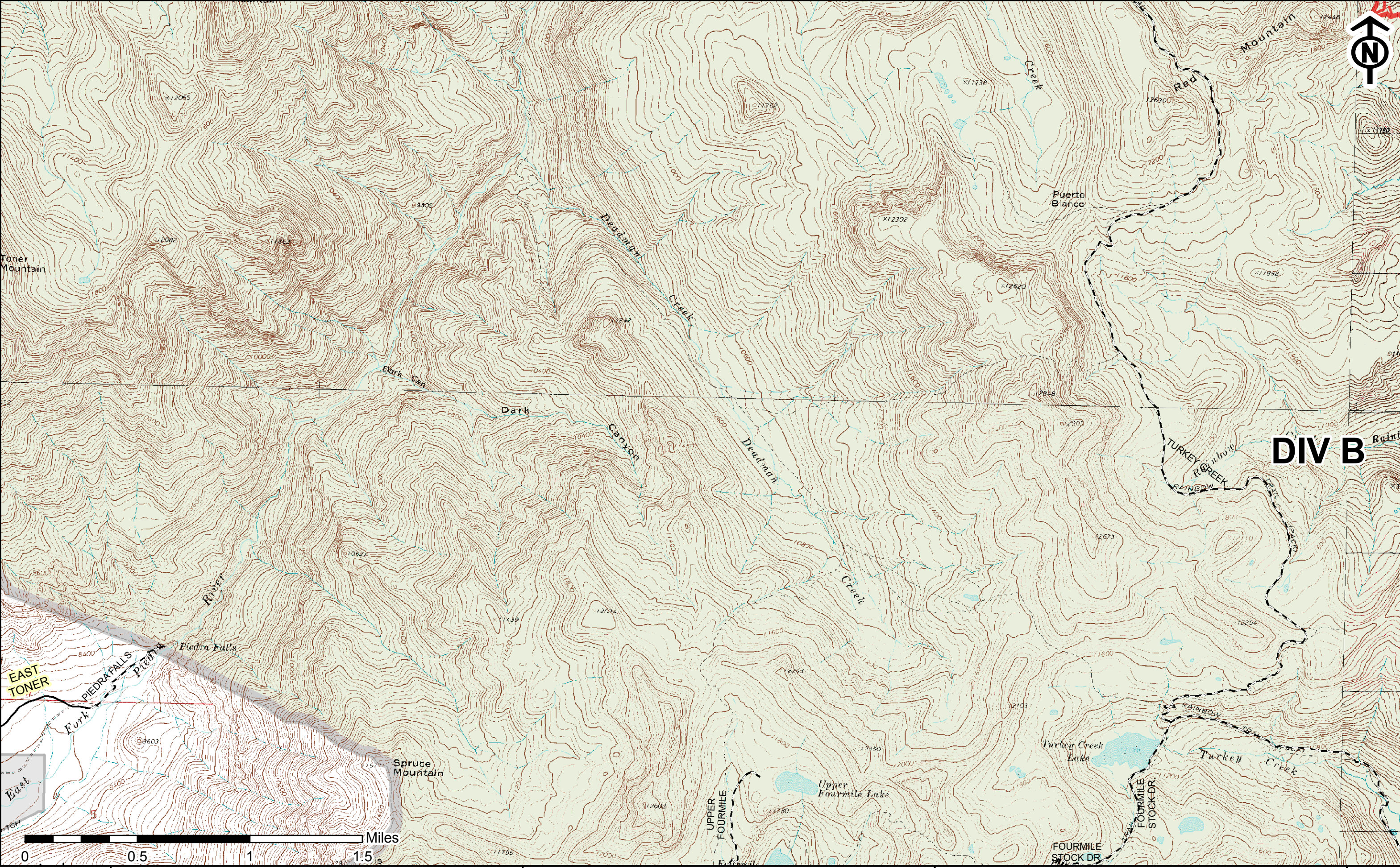
107°2'W

107°0'W



37°30'N

37°30'N



**DIV B**

EAST  
TONER



107°6'W

107°4'W

107°2'W

107°0'W



107°12'W

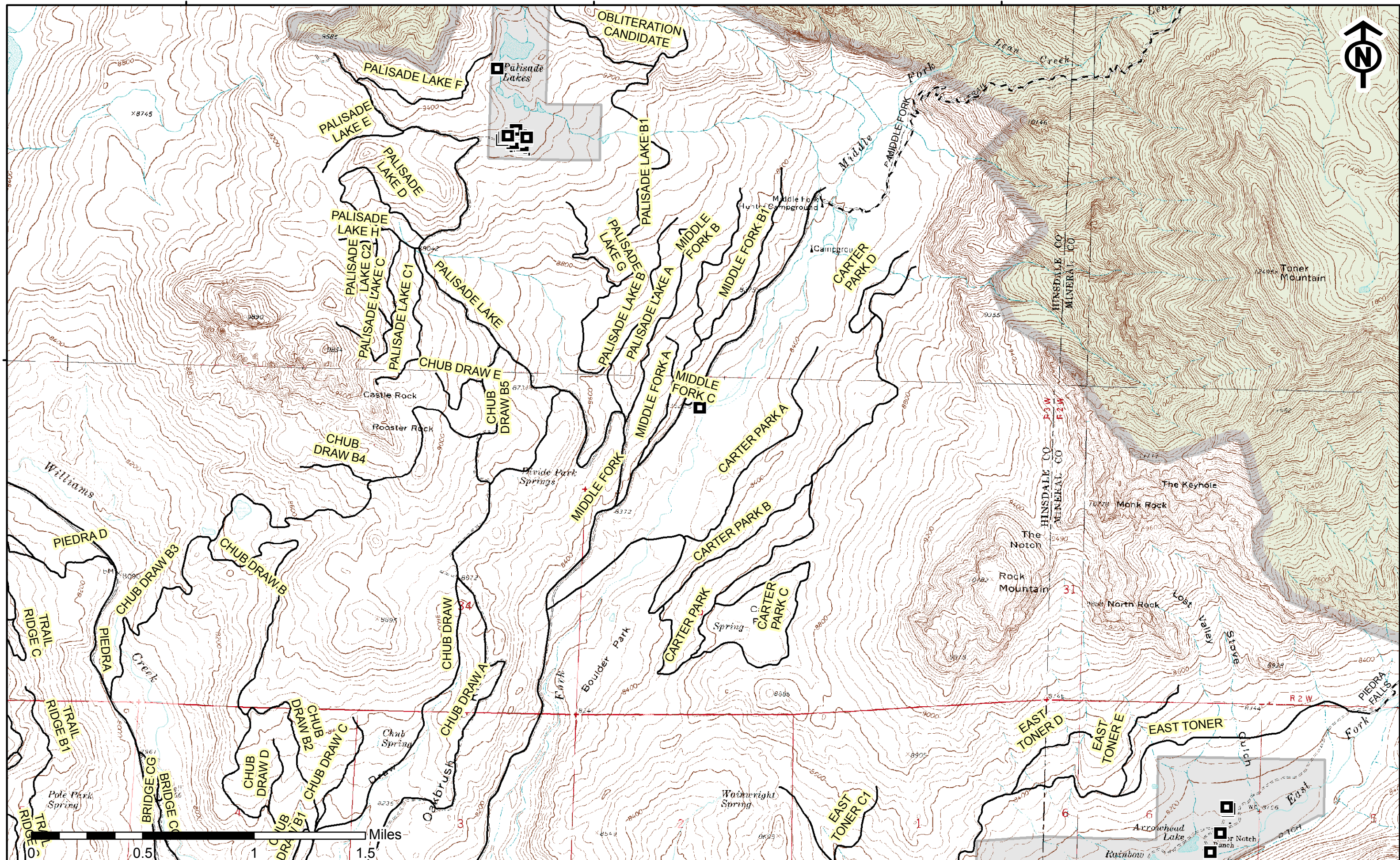
107°10'W

107°8'W



37°30'N

37°30'N



107°12'W

107°10'W

107°8'W

107°6'W

Produced on: 7/8/2013 9:26:34 PM

107°18'W

107°16'W

107°14'W

# WILLIAMS CONTINGENCY GROUP



37°30'N

37°30'N

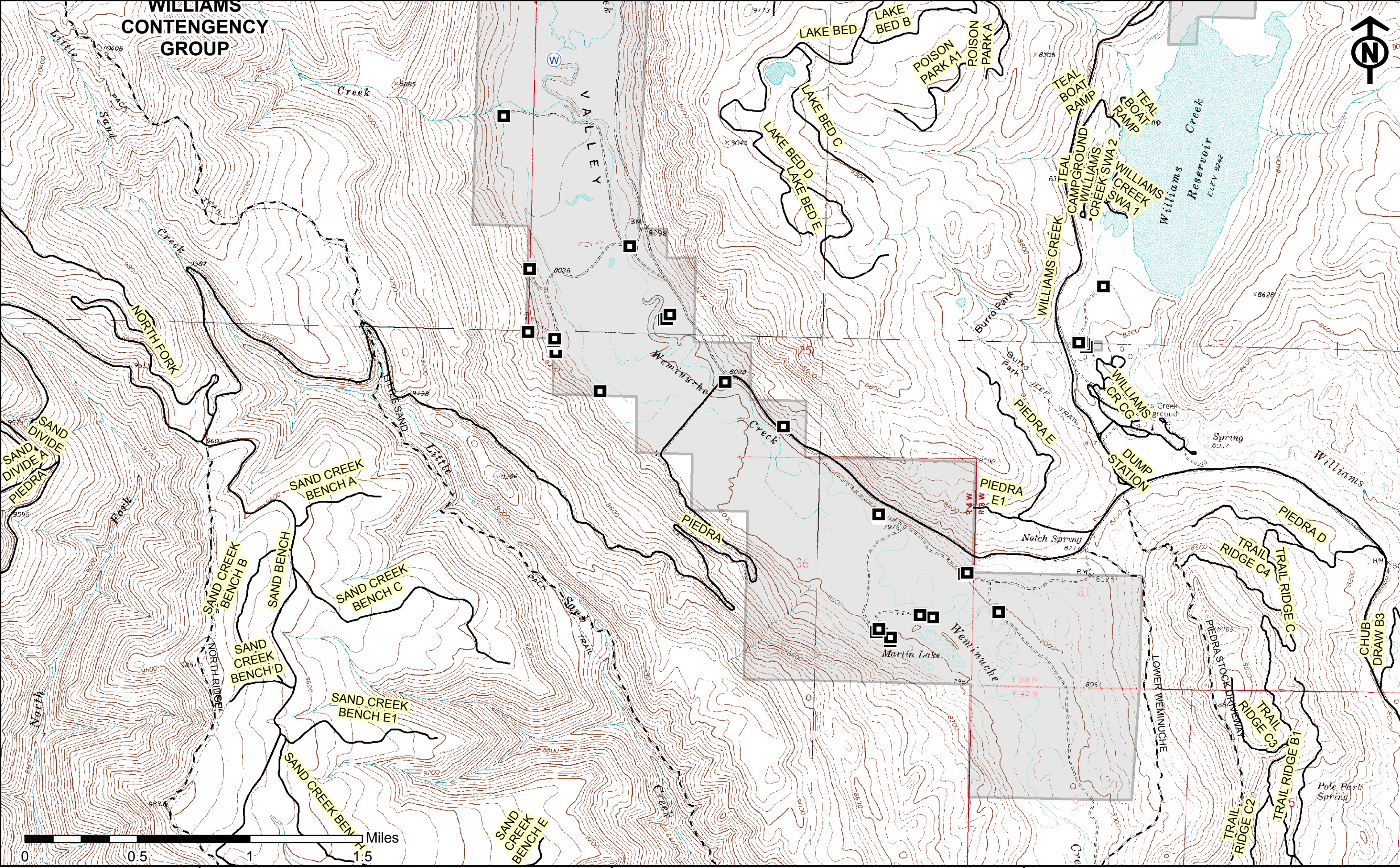
37°28'N

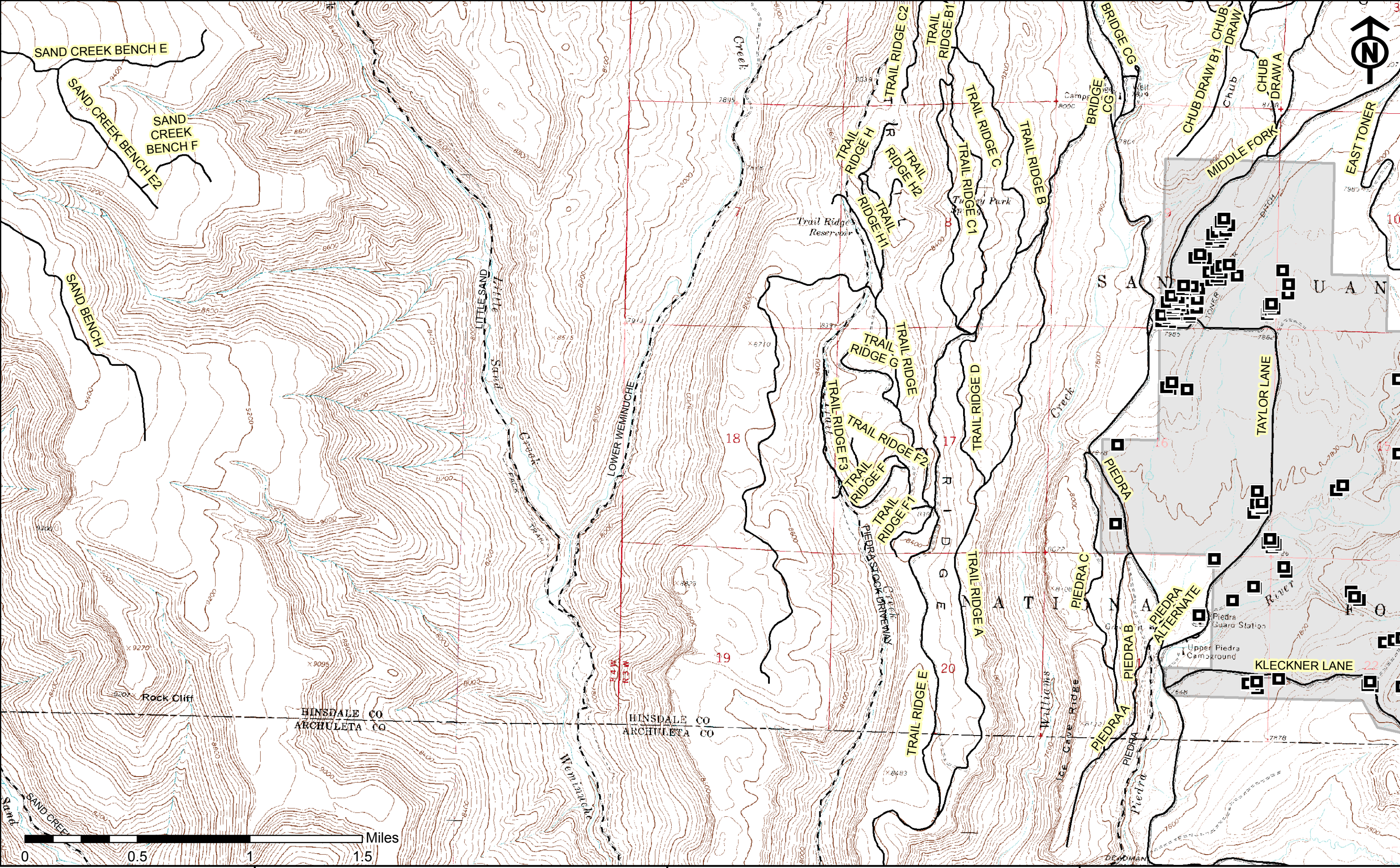


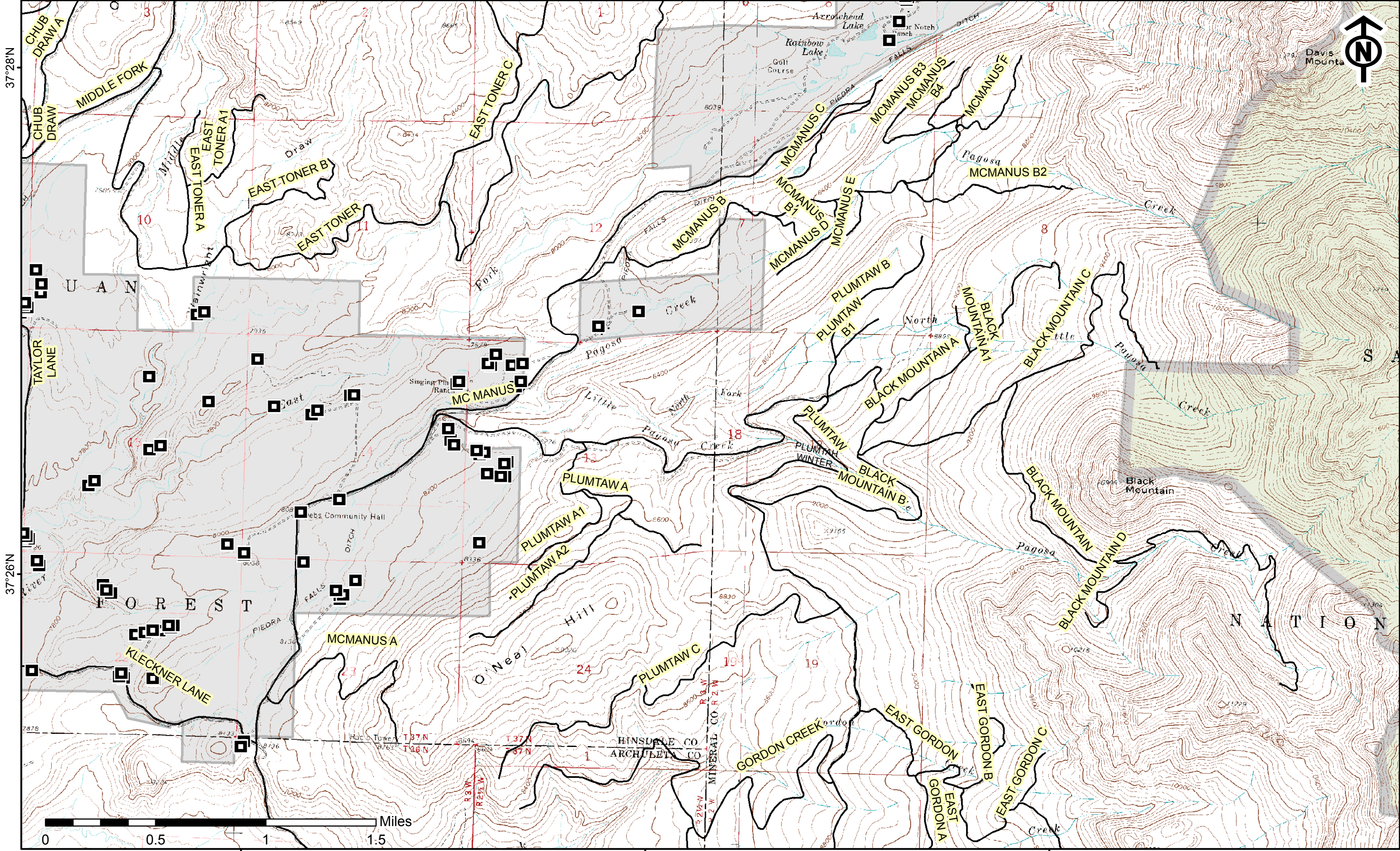
107°18'W

107°16'W

107°14'W







107°4'W

107°2'W

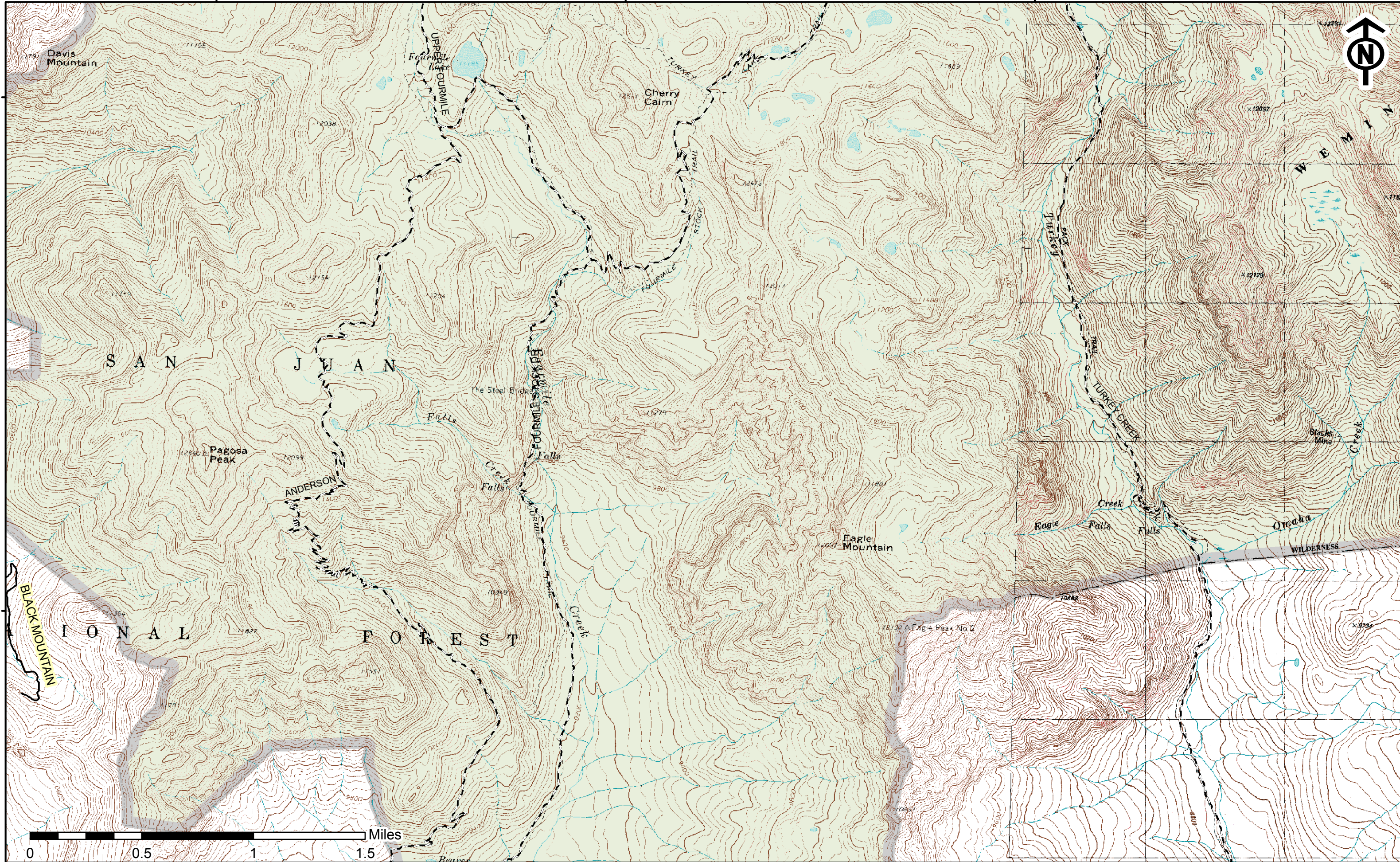
106°60'W

37°28'N

37°26'N

37°28'N

37°26'N



107°4'W

107°2'W

107°0'W

