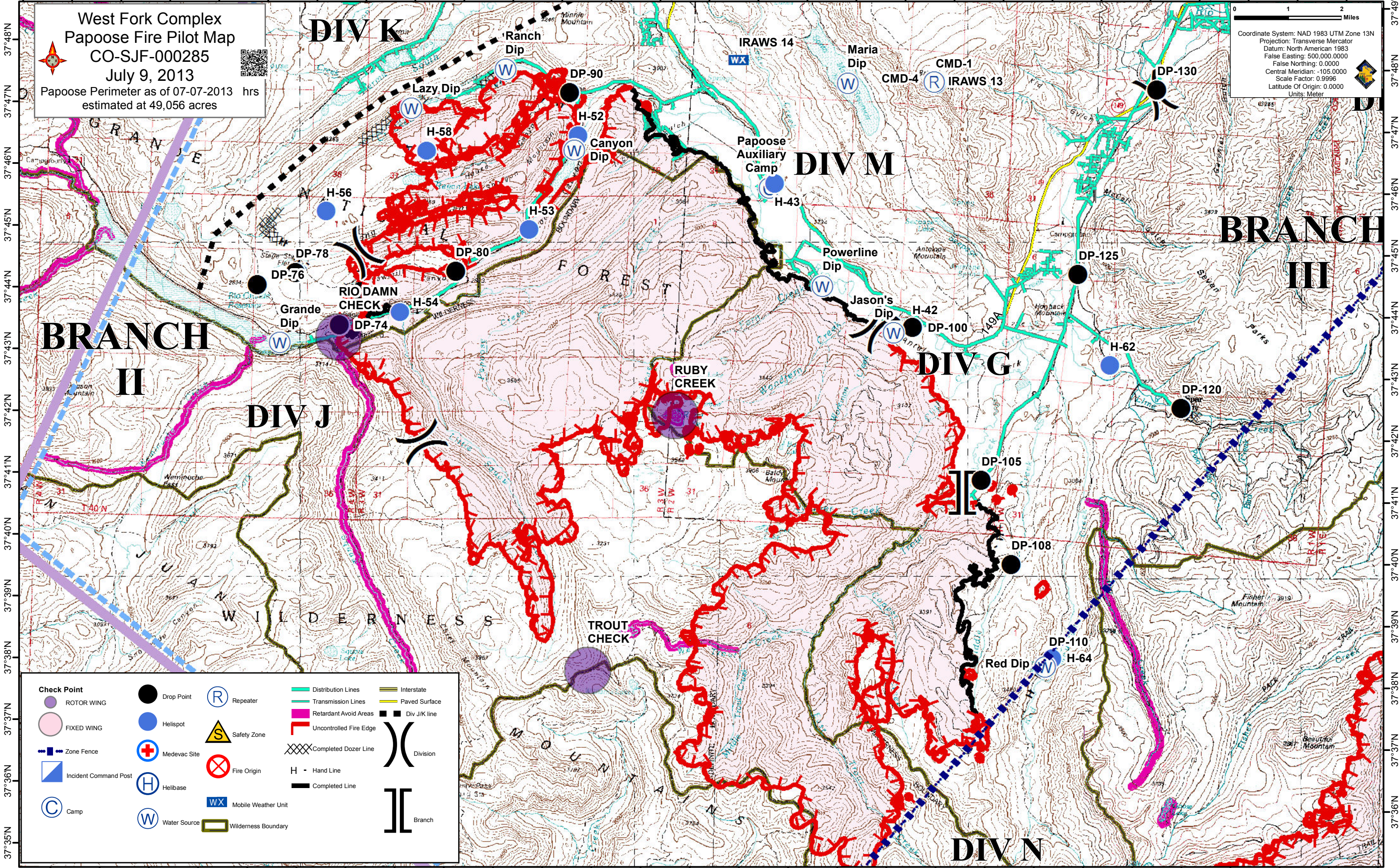


107°22'W 107°21'W 107°20'W 107°19'W 107°18'W 107°17'W 107°16'W 107°15'W 107°14'W 107°13'W 107°12'W 107°11'W 107°10'W 107°9'W 107°8'W 107°7'W 107°6'W 107°5'W 107°4'W 107°3'W 107°2'W 107°1'W 107°0'W 106°59'W 106°58'W 106°57'W 106°56'W 106°55'W

West Fork Complex
Papoose Fire Pilot Map
CO-SJF-000285
July 9, 2013
Papoose Perimeter as of 07-07-2013 hrs
estimated at 49,056 acres

0 1 2 Miles
Coordinate System: NAD 1983 UTM Zone 13N
Projection: Transverse Mercator
Datum: North American 1983
False Easting: 500,000.0000
False Northing: 0.0000
Central Meridian: -105.0000
Scale Factor: 0.9996
Latitude Of Origin: 0.0000
Units: Meter



ROTOR WING Check Point	Drop Point	Repeater	Distribution Lines	Interstate
FIXED WING Check Point	Helispot	Safety Zone	Transmission Lines	Paved Surface
Zone Fence	Medevac Site	Fire Origin	Retardant Avoid Areas	Div J/K line
Incident Command Post	Helibase	Completed Dozer Line	Uncontrolled Fire Edge	Hand Line
Camp	Water Source	Completed Line	Wilderness Boundary	Division
				Branch

107°21'W 107°20'W 107°19'W 107°18'W 107°17'W 107°16'W 107°15'W 107°14'W 107°13'W 107°12'W 107°11'W 107°10'W 107°9'W 107°8'W 107°7'W 107°6'W 107°5'W 107°4'W 107°3'W 107°2'W 107°1'W 107°0'W 106°59'W 106°58'W 106°57'W 106°56'W 106°55'W