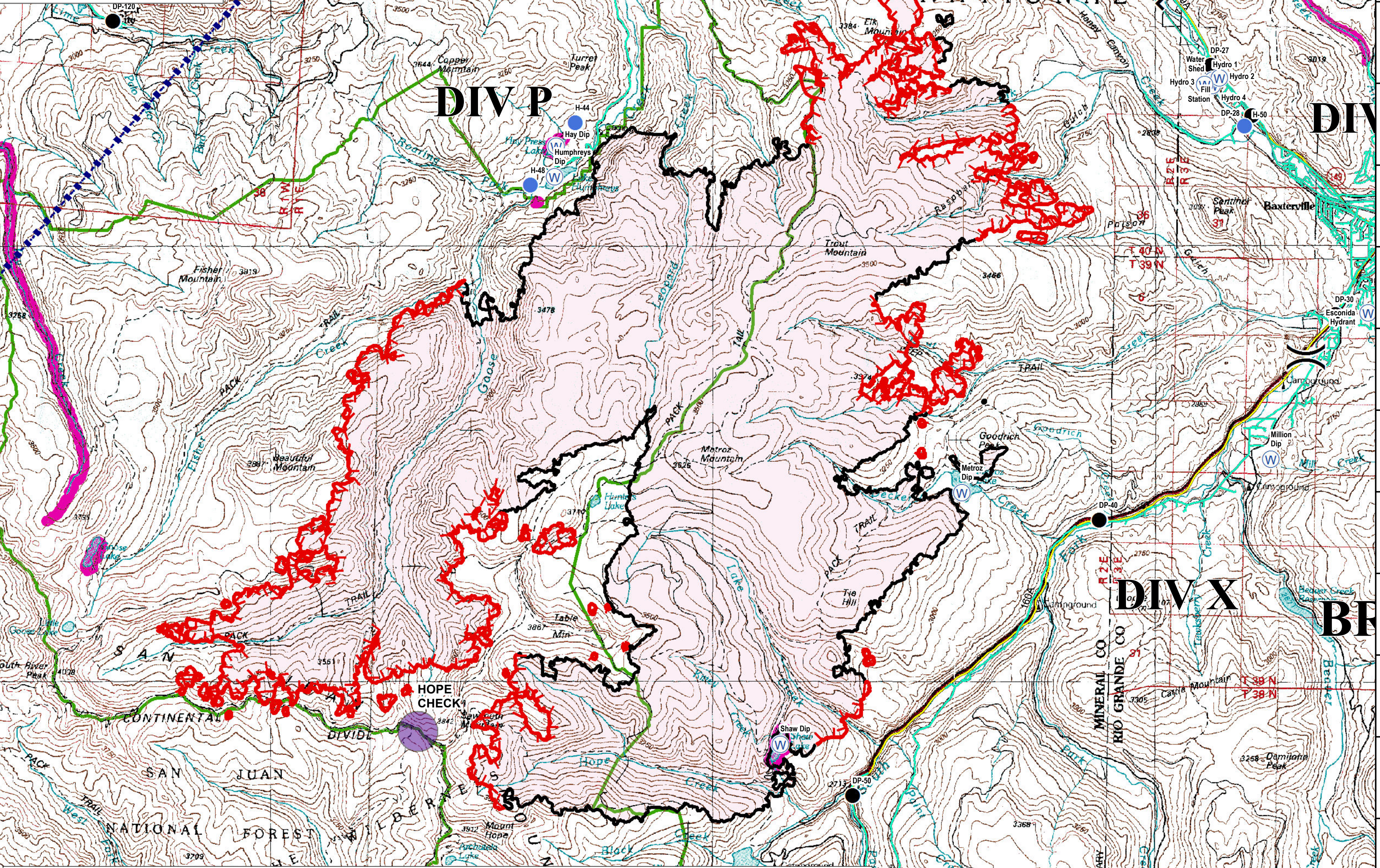


107°2'W 107°1'W 107°0'W 106°59'W 106°58'W 106°57'W 106°56'W 106°55'W 106°54'W 106°53'W 106°52'W 106°51'W 106°50'W 106°49'W 106°48'W 106°47'W 106°46'W 106°45'W 106°44'W 106°43'W 106°42'W 106°41'W 106°40'W 106°39'W

West Fork Complex: West Fork Fire
Pilot Map
CO-SJF-000285
July 9, 2013
 West Fork Perimeter as of 07-07-2013 1200 hrs
 Estimated 39,217 ac

BRANCH IV

Label	Type	Long	Lat
Blue Creek Lodge Spike	Camp	106°47.811W	37°46.101N
Cooper Auxiliary	Camp	107°1.615W	37°45.888N
South Fork Spike	Camp	106°53.815W	37°40.551N
West Fork Spike	Camp	106°54.092W	37°26.663N
Creede Check	Check Point	106°55.530W	37°50.000N
Creede IP	Check Point	106°55.530W	37°50.000N
Dal Norte IP	Check Point	106°21.270W	37°42.820N
Fork Check	Check Point	106°52.534W	37°29.814N
Game IP	Check Point	106°53.267W	37°27.026N
Haron Check	Check Point	106°53.267W	37°27.026N
Hope Check	Check Point	106°53.270W	37°33.850N
Rio Dam Check	Check Point	107°15.392W	37°43.315N
Ruby Check	Check Point	107°08.510W	37°42.175N
Sk Check	Check Point	106°48.000W	37°29.000N
Trail Check	Check Point	107°10.500W	37°35.000N
Wagon Check	Check Point	106°47.800W	37°46.500N
Williams Check	Check Point	107°13.107W	37°30.778N
Wolf Creek IP	Check Point	106°47.170W	37°28.850N
DP-1	Drop Point	106°48.907W	37°27.387N
DP-2	Drop Point	106°47.597W	37°28.365N
DP-3	Drop Point	106°50.067W	37°29.117N
DP-4	Drop Point	106°46.530W	37°25.167N
DP-20	Drop Point	106°49.715W	37°46.027N
DP-21	Drop Point	106°48.127W	37°46.025N
DP-22	Drop Point	106°44.232W	37°44.175N
DP-25	Drop Point	106°43.718W	37°44.011N
DP-26	Drop Point	106°43.042W	37°43.67N
DP-27	Drop Point	106°41.263W	37°44.191N
DP-28	Drop Point	106°40.133W	37°43.587N
DP-29	Drop Point	106°38.428W	37°40.872N
DP-30	Drop Point	106°39.277W	37°39.169N
DP-40	Drop Point	106°42.851W	37°36.597N
DP-50	Drop Point	106°46.565W	37°33.171N
DP-74	Drop Point	107°15.376W	37°43.51N
DP-76	Drop Point	107°17.071W	37°44.132N
DP-78	Drop Point	107°16.341W	37°43.428N
DP-80	Drop Point	107°13.038W	37°44.426N
DP-90	Drop Point	107°10.795W	37°47.358N
DP-92	Drop Point	107°8.971W	37°50.902N
DP-93	Drop Point	107°12.285W	37°53.315N
DP-94	Drop Point	107°10.591W	37°53.472N
DP-96	Drop Point	107°9.725W	37°55.863N
DP-100	Drop Point	107°3.709W	37°43.667N
DP-106	Drop Point	107°2.235W	37°41.232N
DP-108	Drop Point	107°1.594W	37°39.875N
DP-110	Drop Point	107°0.782W	37°38.34N
DP-120	Drop Point	106°58.19W	37°42.468N
DP-125	Drop Point	107°0.348W	37°44.6N
DP-130	Drop Point	106°58.69W	37°47.812N
DP-140	Drop Point	106°54.291W	37°45.867N
DP-180	Drop Point	106°50.495W	37°46.658N
Helibase	Helibase	107°0.845W	37°16.028N
Creede Helibase	Helibase	106°55.084W	37°49.454N
Milow Helibase	Helibase	106°36.617W	37°40.056N
H-1	Helispot	106°48.907W	37°27.387N
H-2	Helispot	106°49.379W	37°25.861N
H-3	Helispot	106°50.141W	37°26.018N
H-4	Helispot	106°46.869W	37°25.193N
H-5	Helispot	106°55.719W	37°28.207N
H-41	Helispot	107°9.916W	37°50.578N
H-42	Helispot	107°3.709W	37°43.667N
H-43	Helispot	107°6.584W	37°45.969N
H-44	Helispot	106°51.033W	37°43.326N
H-45	Helispot	106°50.267W	37°46.684N
H-46	Helispot	106°50.505W	37°46.722N
H-47	Helispot	106°49.8W	37°45.876N
H-48	Helispot	106°51.688W	37°40.565N
H-49	Helispot	106°38.34W	37°40.742N
H-50	Helispot	106°40.724W	37°41.459N
H-51	Helispot	106°37.345W	37°40.849N
H-52	Helispot	107°10.605W	37°46.68N
H-53	Helispot	107°11.565W	37°45.135N
H-54	Helispot	107°14.161W	37°43.748N
H-55	Helispot	106°14.29W	37°43.8N
H-56	Helispot	107°15.705W	37°45.351N
H-57	Helispot	106°47.077W	37°43.15N
H-58	Helispot	107°13.584W	37°46.372N
H-59	Helispot	106°46.617W	37°43.095N
H-60	Helispot	106°47.717W	37°44.483N
H-62	Helispot	106°59.663W	37°43.138N
H-64	Helispot	107°00.714W	37°38.378N
ICP Dal Norte	Incident Command Post	106°20.85W	37°40.442N
ICP Pagosa	Incident Command Post	107°0.789W	37°15.977N
Med/Vac Site	Med/Vac Site	106°47.865W	37°45.97N
Med/Vac Site	Med/Vac Site	106°49.379W	37°25.861N
SJF2 Pagosa Portable	Mobile Weather Unit	106°48.023W	37°29.457N
Blue Park RAWs	Mobile Weather Unit	106°46.717W	37°47.583N
IRAWS 13	Mobile Weather Unit	107°3.37W	37°47.673N
IRAWS 14	Mobile Weather Unit	107°3.37W	37°47.673N
IRAWS 15	Mobile Weather Unit	106°33.345W	37°48.452N
IRAWS 16	Mobile Weather Unit	106°39.738W	37°50.518N
IRAWS 17	Mobile Weather Unit	106°35.048W	37°41.782N
Agua CMD	Repeater	106°35.322W	37°43.67N
CMD-1	Repeater	107°3.341W	37°47.649N
CMD-2	Repeater	106°35.333W	37°43.767N
CMD-3	Repeater	106°34.202W	37°27.748N
CMD-4	Repeater	107°3.37W	37°47.673N
Saddle Mt CMD	Repeater	106°56.741W	37°26.373N
Wolf Creek CMD	Repeater	106°47.923W	37°27.425N
Clear Retardant Dip	RetardantMud Pit	107°9.234W	37°51.339N
Elk Retardant Dip	RetardantMud Pit	106°40.577W	37°41.362N
Safety Zone	Safety Zone	106°47.845W	37°45.943N
Safety Zone	Safety Zone	106°48.292W	37°45.867N
Safety Zone	Safety Zone	106°46.549W	37°45.365N
Borns Dip	Water Source	106°55.462W	37°27.836N
Canyon Dip	Water Source	107°10.676W	37°46.438N
Divide Dip	Water Source	107°20.37W	37°35.95N
Escondida Hydrant	Water Source	106°38.772W	37°39.193N
Fill Station	Water Source	106°41.123W	37°42.036N
Fander Dip	Water Source	107°16.584W	37°43.203N
Hay Dip	Water Source	106°51.319W	37°41.049N
High Dip	Water Source	106°46.8W	37°26.9N
Humphreys Dip	Water Source	106°51.331W	37°40.672N
Hydro 1	Water Source	106°41.222W	37°42.008N
Hydro 2	Water Source	106°41.156W	37°42.018N
Hydro 3	Water Source	106°41.308W	37°41.959N
Hydro 4	Water Source	106°41.234W	37°41.943N
Lason's Dip	Water Source	107°04.089W	37°43.587N
Ladders Dip	Water Source	106°48.889W	37°24.618N
Lazy Dip	Water Source	107°14.016W	37°47.051N
Maria Dip	Water Source	107°5.14W	37°47.623N
Metroz Dip	Water Source	106°44.974W	37°36.901N
Million Dip	Water Source	106°40.223W	37°37.378N
Par Dip	Water Source	106°46.042W	37°28.949N
Powerline Dip	Water Source	107°5.556W	37°44.329N
Ranch Dip	Water Source	107°12.123W	37°47.717N
Red Dip	Water Source	107°00.852W	37°38.235N
Shaw Dip	Water Source	106°47.69W	37°33.781N
Water Shed	Water Source	106°41.352W	37°41.958N



Division (Symbol:)

Branch (Symbol:)

Check Point

- ROTOR WING (Symbol:)
- FIXED WING (Symbol:)

FireLine

- Uncontrolled Fire Edge (Symbol:)
- Completed Line (Symbol:)
- Div J/K line (Symbol:)
- Powerlines - Distribution (Symbol:)
- Powerlines - Transmission (Symbol:)
- Interstate (Symbol:)
- Paved Surface (Symbol:)

Retardant Avoid Areas (Symbol:)

Fire Origin (Symbol:)

Medevac Site (Symbol:)

Water Source (Symbol:)

Helispot (Symbol:)

Camp (Symbol:)

Drop Point (Symbol:)

Helibase (Symbol:)

Incident Command Post (Symbol:)

Mobile Weather Unit (Symbol:)

Repeater (Symbol:)

0 0.25 0.5 1 1.5 2 Miles

KDH Date: 7/8/2013 Time: 8:52:05 PM

Coordinate System: NAD 1983 UTM Zone 13N

Projection: Transverse Mercator

Datum: North American 1983

False Easting: 500,000.0000

False Northing: 0.0000

Central Meridian: -105.0000

Scale Factor: 0.9996

Latitude Of Origin: 0.0000

Units: Meter

107°2'W 107°1'W 107°0'W 106°59'W 106°58'W 106°57'W 106°56'W 106°55'W 106°54'W 106°53'W 106°52'W 106°51'W 106°50'W 106°49'W 106°48'W 106°47'W 106°46'W 106°45'W 106°44'W 106°43'W 106°42'W 106°41'W 106°40'W 106°39'W