

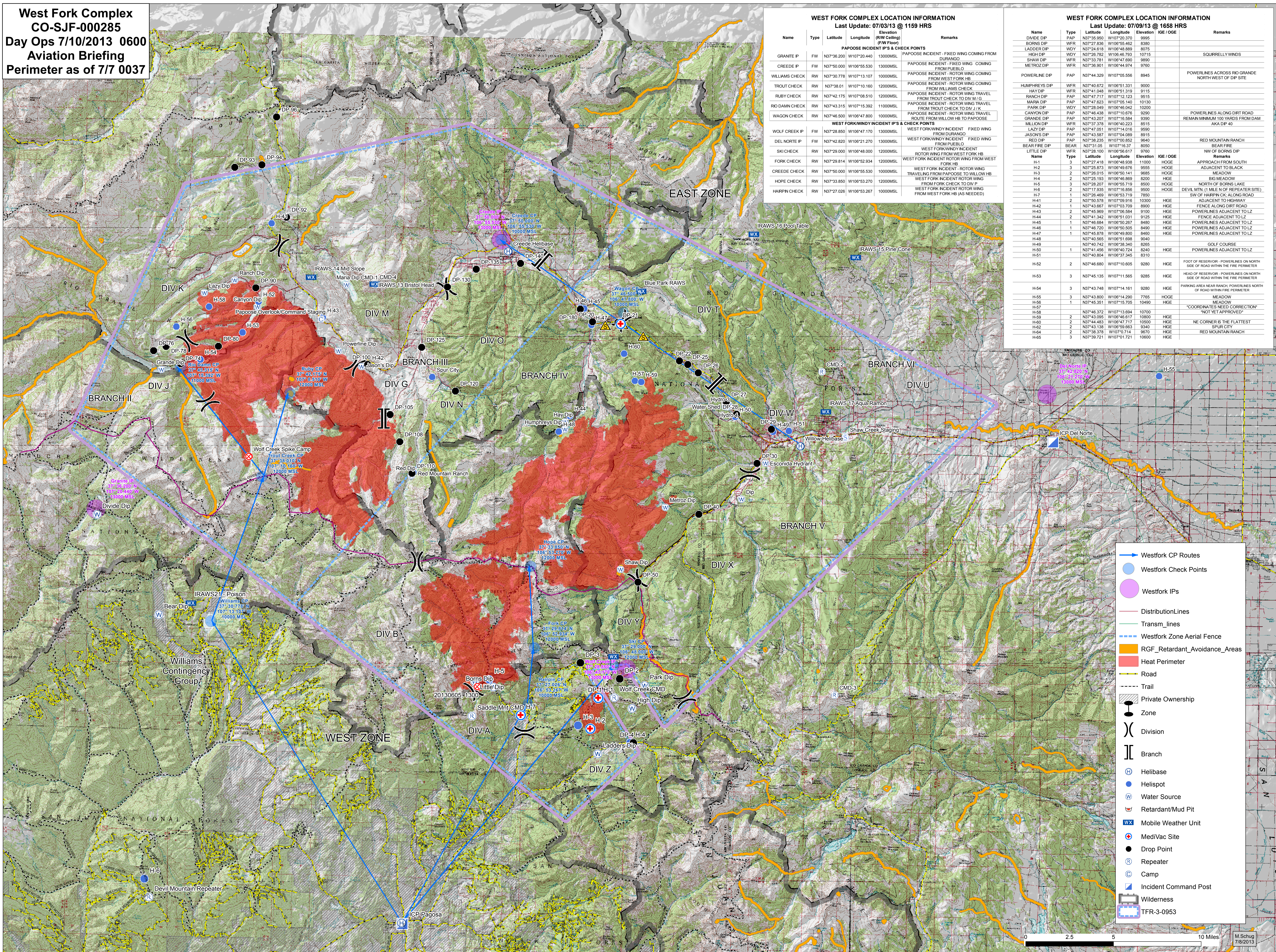
**West Fork Complex**  
**CO-SJF-000285**  
**Day Ops 7/10/2013 0600**  
**Aviation Briefing**  
**Perimeter as of 7/7 0037**

**WEST FORK COMPLEX LOCATION INFORMATION**  
 Last Update: 07/03/13 @ 1159 HRS

Name	Type	Latitude	Longitude	Elevation (RW Ceiling)	Remarks
<b>PAPOOSE INCIDENT IPS &amp; CHECK POINTS</b>					
GRANITE P	FW	N37°36.200	W107°20.440	13000MSL	
CREEDE P	FW	N37°50.000	W106°55.530	13000MSL	PAPOOSE INCIDENT - FIXED WING COMING FROM DURANGO
WILLIAMS CHECK	RW	N37°30.778	W107°13.107	10000MSL	PAPOOSE INCIDENT - ROTOR WING COMING FROM WEST FORK HB
TROUT CHECK	RW	N37°38.011	W107°10.160	12000MSL	PAPOOSE INCIDENT - ROTOR WING COMING FROM WILLIAMS CHECK
RUBY CHECK	RW	N37°42.175	W107°08.510	12000MSL	PAPOOSE INCIDENT - ROTOR WING TRAVEL FROM TROUT CHECK TO DIV J/K
RIO DAMN CHECK	RW	N37°43.315	W107°15.392	11000MSL	PAPOOSE INCIDENT - ROTOR WING TRAVEL FROM TROUT CHECK TO DIV J/K
WAGON CHECK	RW	N37°46.500	W106°47.800	10000MSL	PAPOOSE INCIDENT - ROTOR WING TRAVEL ROUTE FROM WILLOW HB TO PAPOOSE
<b>WEST FORK WINDY INCIDENT IPS &amp; CHECK POINTS</b>					
WOLF CREEK P	FW	N37°28.850	W106°47.170	13000MSL	WEST FORK WINDY INCIDENT - FIXED WING FROM DURANGO
DEL NORTE P	FW	N37°42.820	W106°21.270	13000MSL	WEST FORK WINDY INCIDENT - FIXED WING FROM PUEBLO
SKI CHECK	RW	N37°29.000	W106°48.000	12000MSL	WEST FORK WINDY INCIDENT - ROTOR WING FROM WEST FORK HB
FORK CHECK	RW	N37°29.814	W106°52.934	12000MSL	WEST FORK INCIDENT ROTOR WING FROM WEST FORK HB
CREEDE CHECK	RW	N37°50.000	W106°55.530	10000MSL	WEST FORK INCIDENT ROTOR WING TRAVELING FROM PAPOOSE TO WILLOW HB
HOPE CHECK	RW	N37°33.850	W106°53.270	12000MSL	WEST FORK INCIDENT ROTOR WING FROM FORK CHECK TO DIV P
HARRPN CHECK	RW	N37°27.028	W106°53.267	10000MSL	WEST FORK INCIDENT ROTOR WING FROM WEST FORK HB (AS NEEDED)

**WEST FORK COMPLEX LOCATION INFORMATION**  
 Last Update: 07/09/13 @ 1658 HRS

Name	Type	Latitude	Longitude	Elevation	IGE / OGE	Remarks
DIVDE DP	PAP	N37°35.950	W107°20.370	9995		
BORNS DP	WFR	N37°27.836	W106°55.462	8380		
LADDER DP	WDY	N37°24.618	W106°48.889	8075		SOURRELY WINDS
HIGH DP	WDY	N37°28.782	W106°45.793	80715		
SHAW DP	WFR	N37°33.781	W106°47.690	8980		
METROZ DP	WFR	N37°36.901	W106°44.974	9760		
<b>POWERLINE DP</b>						
HUMPHREYS DP	WFR	N37°40.672	W106°51.331	9000		POWERLINES ACROSS RIO GRANDE NORTH WEST OF DP SITE
HAY DP	PAP	N37°41.048	W106°51.319	9115		
RANCH DP	PAP	N37°47.717	W107°12.123	9515		
MARA DP	PAP	N37°47.623	W107°05.140	10130		
PARK DP	WDY	N37°28.049	W106°46.042	8200		POWERLINES ALONG DIRT ROAD
CANYON DP	PAP	N37°46.438	W107°10.076	9290		REMAIN MINIMUM 100 YARDS FROM DAM
GRANDE DP	PAP	N37°43.207	W107°16.584	9390		AKA DP 40
MILLION DP	WFR	N37°37.378	W106°40.223	8515		
LAZY DP	PAP	N37°47.051	W107°14.016	9590		
JASONS DP	PAP	N37°43.587	W107°04.089	8915		
RED DP	PAP	N37°38.235	W107°00.852	9640		RED MOUNTAIN RANCH
BEAR FIRE DP	BEAR	N37°31.05	W107°16.37	8050		BEAR FIRE
<b>LITTLE DP</b>						
H-1	3	N37°27.418	W106°48.938	11000	HIGE	APPROACH FROM SOUTH
H-2	3	N37°25.873	W106°49.676	9555	HIGE	ADJACENT TO BLACK
H-3	2	N37°28.015	W106°50.141	9665	HIGE	MEADOW
H-4	2	N37°25.193	W106°46.869	8200	HIGE	BIG MEADOW
H-5	3	N37°28.207	W106°55.719	8500	HIGE	NORTH OF BORNS LAKE
H-6	2	N37°17.935	W107°16.896	9500	HIGE	DEVL MTN (1 MILE N OF REPEATER SITE)
H-7	1	N37°28.469	W106°53.719	7850	HIGE	SW OF HARRPN CK ALONG ROAD
H-41	2	N37°50.578	W107°09.916	10300	HIGE	ADJACENT TO HIGHWAY
H-42	1	N37°43.667	W107°03.709	8900	HIGE	FENCE ALONG DIRT ROAD
H-43	2	N37°46.969	W107°06.584	9100	HIGE	POWERLINES ADJACENT TO LZ
H-44	2	N37°41.342	W106°51.031	8125	HIGE	FENCE ADJACENT TO LZ
H-45	1	N37°46.684	W106°50.267	8480	HIGE	POWERLINES ADJACENT TO LZ
H-46	1	N37°46.720	W106°50.505	8490	HIGE	POWERLINES ADJACENT TO LZ
H-47	1	N37°45.878	W106°49.800	8460	HIGE	POWERLINES ADJACENT TO LZ
H-48	1	N37°40.565	W106°51.698	9040	HIGE	
H-49	1	N37°40.742	W106°38.340	8285	HIGE	GOLF COURSE
H-50	1	N37°41.456	W106°40.724	8240	HIGE	POWERLINES ADJACENT TO LZ
H-51	1	N37°40.804	W106°37.345	8310	HIGE	
H-52	2	N37°46.680	W107°10.605	9280	HIGE	FOOT OF RESERVOIR - POWERLINES ON NORTH SIDE OF ROAD WITHIN THE FIRE PERIMETER
H-53	3	N37°45.135	W107°11.565	9285	HIGE	HEAD OF RESERVOIR - POWERLINES ON NORTH SIDE OF ROAD WITHIN THE FIRE PERIMETER
H-54	3	N37°43.748	W107°14.161	9280	HIGE	PARKING AREA NEAR RANCH - POWERLINES NORTH OF ROAD WITHIN FIRE PERIMETER
H-55	3	N37°43.800	W106°14.290	7765	HIGE	MEADOW
H-56	1	N37°45.351	W107°15.705	10490	HIGE	MEADOW
H-57						"COORDINATES NEED CORRECTION"
H-58						"NOT YET APPROVED"
H-59	2	N37°43.095	W106°46.617	10800	HIGE	
H-60	2	N37°44.483	W106°47.717	10590	HIGE	
H-62	2	N37°43.138	W106°56.663	9340	HIGE	NE CORNER IS THE FLATTEST
H-64	2	N37°38.378	W107°0.714	9670	HIGE	SPUR CITY
H-65	3	N37°39.721	W107°01.721	10600	HIGE	RED MOUNTAIN RANCH



- Westfork CP Routes
- Westfork Check Points
- Westfork IPs
- Distribution Lines
- Transm. lines
- Westfork Zone Aerial Fence
- RGF\_Retardant\_Avoidance\_Areas
- Heat Perimeter
- Road
- - - Trail
- Private Ownership
- Zone
- Division
- Branch
- Helibase
- Helispot
- Water Source
- Retardant/Mud Pit
- WX Mobile Weather Unit
- MediVac Site
- Drop Point
- Repeater
- Camp
- Incident Command Post
- Wilderness
- TFR-3-0953